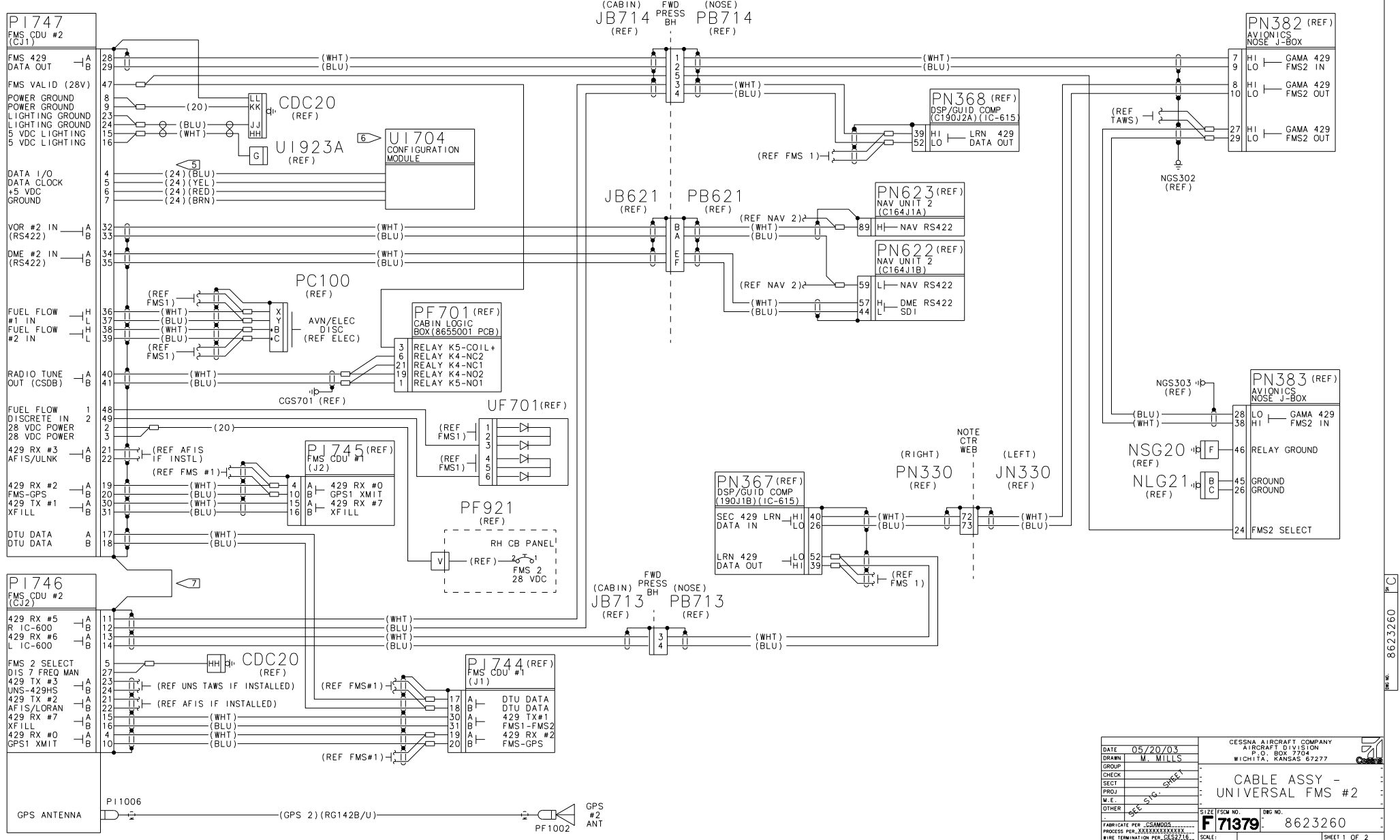


NOTES:

- THIS DRAWING FILED IN CCD.
- UNSHIELDED SINGLE CONDUCTOR WIRE SHALL BE PER M81044/12-XX-9. SHIELDED PAIR PER M27500-XXML2T08 TWISTED PAIR PER M27500-XXML2U00 (XX=22 AWG EXCEPT AS NOTED).
- FOR LIGHTING & GND BLOCK/STUD LOCATIONS, REFER TO THE LIGHTING & GND BLOCK/STUD INSTL DWGS CALLED OUT ON THE AVIONICS INSTL KIT.
- AN ASTERISK INDICATES LOWER CASE LETTERS.
- VENDOR SUPPLIED WIRES.
- THE CONFIGURATION MODULE IS MOUNTED ON, AND BECOMES PART OF THE CONNECTOR STRAIN RELIEF.
- PERMISSIBLE TO DEVIATE FROM HIRF REQUIREMENTS AS DEFINED BY CSAM012.
- ECS P/N 392404, ELECTRONIC CABLE SPECIALISTS, FRANKLIN, WI.

REVISIONS				
SHEET	REV	DESCRIPTION	DATE	APPROVED
2	C	REDRAWN WITH CHANGES: 1) WIRE PP1752-SHIELD WAS 22 GAUGE EFF: EC52743	02/24/04 RS	SEE SIGNATURE SHEET

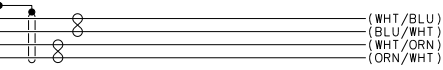


DATE	05/20/03	CESSNA AIRCRAFT COMPANY
DRAWN	M. MILLS	AIRCRAFT DIVISION
CHECK		P.O. BOX 7704
GROUP		WICHITA, KANSAS 67277
SECT		
PROJ		
M.E.		
OTHER		
FABRICATE PER CSAM005		
PROCESS PER XXXXXXXXXX		
WIRE TERMINATION PER 0522716		
SIZE	F71379	8623260
SCALE		

REVISIONS				
SHEET	REV	DESCRIPTION	DATE	APPROVED

P1746 (REF)
FMS CDU #2
(CJ2)

ETHERNT CH1 TX+	38
ETHERNT CH1 TX-	39
ETHERNT CH1 RX+	37
ETHERNT CH1 RX-	36



8

P1752
UNS 100 DATA/P2
TRANSFER UNIT

A	ETHERNT CH1 RX+
B	ETHERNT CH1 RX-
C	ETHERNT CH1 TX+
D	ETHERNT CH1 TX-
P	ETHERNT SHEILD

(20)
C1

DATE	08/14/03	CESSNA AIRCRAFT COMPANY
DRAWN	M. MILLS	AIRCRAFT DIVISION
CHECK		P. O. BOX 7704
SECT		WICHITA, KANSAS 67277
PROJ		CABLE ASSY -
M.E.		UNIVERSAL FMS #2
OTHER		
FABRICATE PER	CSAM002	SIZE FSCM NO.
PROCESS PER	XXXXXXXXXX	DRG NO.
WIRE TERMINATION PER	DE52716	F71379 - 8623260
	SCALE: SCL	SHEET 2 OF 2

8623260 P.C