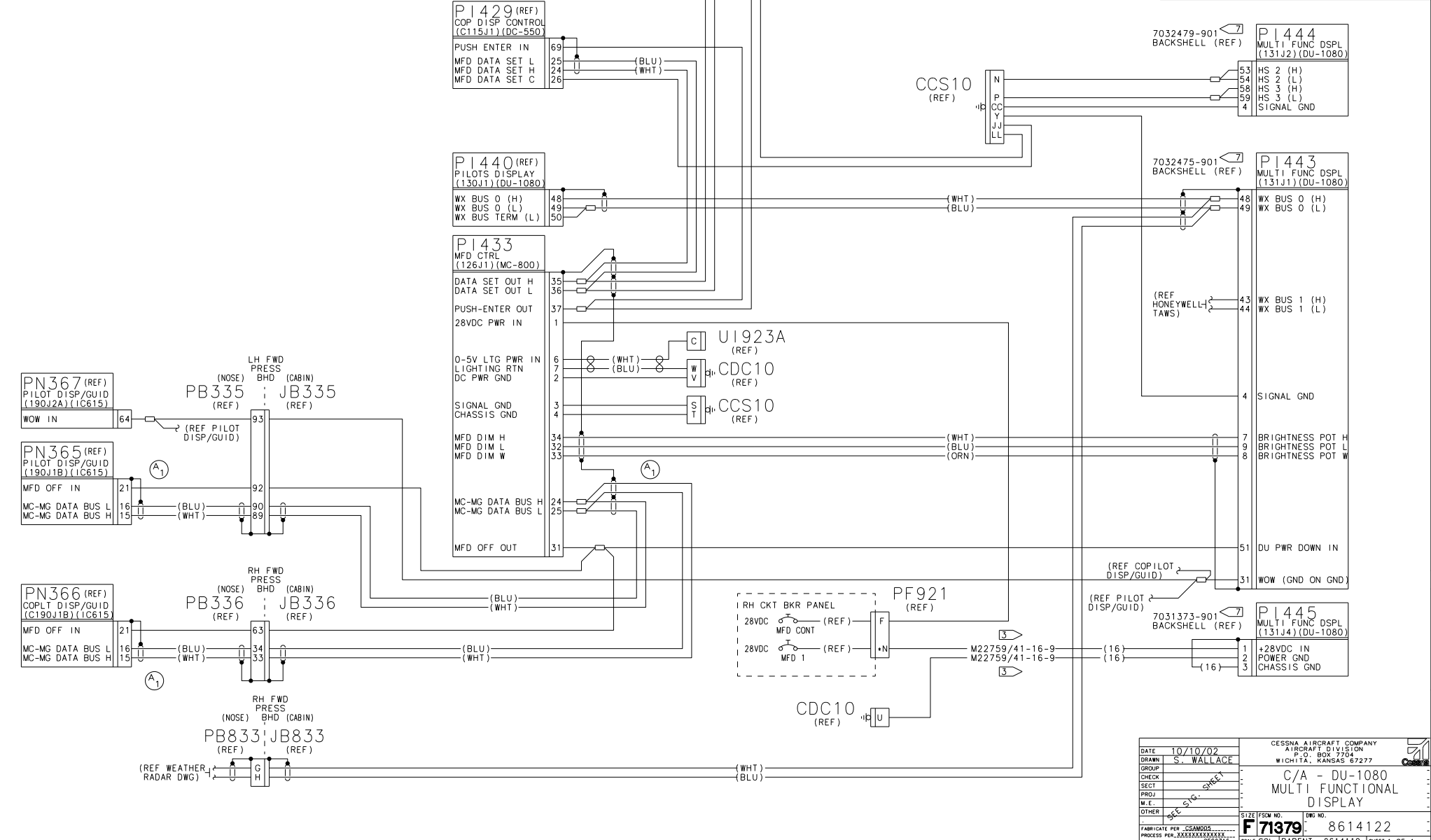


NOTES:

- THIS DRAWING IS FILED IN CCD.
- REFER TO LIGHTING AND GROUND BLOCK/STUD INSTALLATION FOR LOCATIONS.
- USE HIGH TEMPERATURE WIRE TYPE FOR DU-1080 POWER SUPPLY AND GROUND LINES, P/N M22759/41-16-9.
- ALL WIRE PER MIL-W-81044/12, 22 AWG, EXCEPT AS NOTED. TWO CONDUCTOR SHIELDED WIRE PER M27500-XXML2T08. THREE CONDUCTOR SHIELDED WIRE PER M27500-XXML3T08. TWISTED PAIR PER M27500-XXML2U00. (XX AWG 22 EXCEPT AS NOTED)
- BACKSHELL PART OF HONEYWELL BACKSHELL KIT, P/N 7032477-902. KIT CONTAINS PARTS FOR J1, J2 & J4 BACKSHELLS ON ONE DISPLAY UNIT.

REVISIONS			
SHEET	REV	DESCRIPTION	DATE APPROVED
A	BY	REVISION:	3/05/03
		1) ADDED SPLICES AND WIRES:	MIN
		24P1433-89JB335,	
		89PB335-15PN365,	
		25P1433-90JB335,	
		90PB335-16PN365,	
		24P1433-33JB336,	
		33PB336-15PN366,	
		25P1433-34JB336,	
		34PB336-16PN366.	
EFF: EC 049734			
WO XL-2943			



DATE	10/10/02	CESSNA AIRCRAFT COMPANY AIRCRAFT DIVISION P.O. BOX 2704 WICHITA, KANSAS 67277 C/ A - DU-1080 MULTI FUNCTIONAL DISPLAY
DRAWN	S. WALLACE	
GROUP		
CHECK		
SECT		
PROJ.		
M.E.		
OTHER		SIZE (FSW NO.)
FABRICATE PER	OSAMODS	F71379
PROCESS PER	XXXXXXX	8614122
WIRE TERMINATION PER	503272	SCALE: SCL PARENT: 8614119 SHEET 1 OF 1

8614122 EC 049734 WO XL-2943