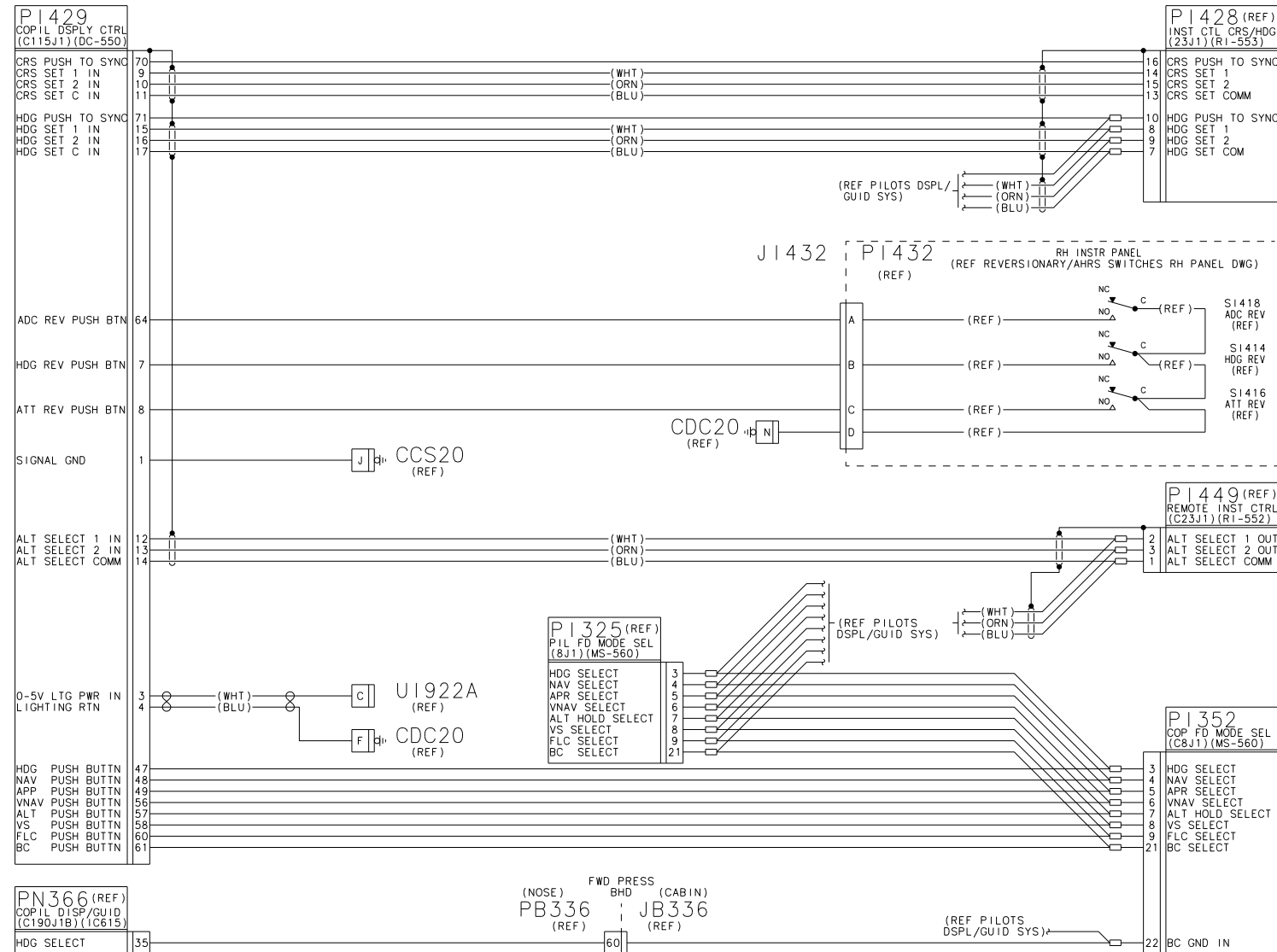


**NOTES:**

1. THIS DWG FILED IN CCD.
2. WIRES TO BE 6" MAXIMUM.
3. UNSHIELDED WIRE SHALL BE PER M81044/12-XX-9  
TWO CONDUCTOR SHIELDED WIRE PER M27500-XXML2T08  
THREE CONDUCTOR SHIELDED WIRE PER M27500-XXML3T08.  
TWISTED PAIR PER M27500-XXML2U00  
(XX = AWG 22 EXCEPT AS NOTED)
4. VENDOR SUPPLIED WIRES ATTACHED TO CONFIGURATION MODULE.
5. THE CONFIGURATION MODULE IS MOUNTED ON THE BACK OF THE IC-615 TRAY. REFER TO AIRCRAFT AVIONICS COLLECTOR FOR INSTALLATION AND PART NUMBER.
6. REFER TO P/L NOTE 1.

7. AN ASTERISK PRECEDING A LETTER INDICATES LOWER CASE.
8. THE POLARIZING POSTS ARE INCLUDED WITH THE CONNECTOR AS LOOSE EQUIPMENT. THEY ARE TO BE INSTALLED IN THE CONNECTOR DURING ASSEMBLY. THE POLARIZATION POSITION IS TO BE THE SAME AS THE MATING CONNECTOR ON THE ASSOCIATED VENDOR BOX.
9. REFER TO P/L NOTE 2.
10. FOR LIGHTING & GND BLOCK/STUD LOCATIONS, REFER TO THE LIGHTING & GND BLOCK/STUD INSTL DRAWINGS CALLED OUT ON THE AVIONICS INSTL KIT.
11. PART OF DU-1080 BACKSHELL KIT. REFERENCE P/L NOTE 3 FOR INDIVIDUAL P/NS & ASSOCIATED REFDES.
12. REFER TO P/L NOTE 4.

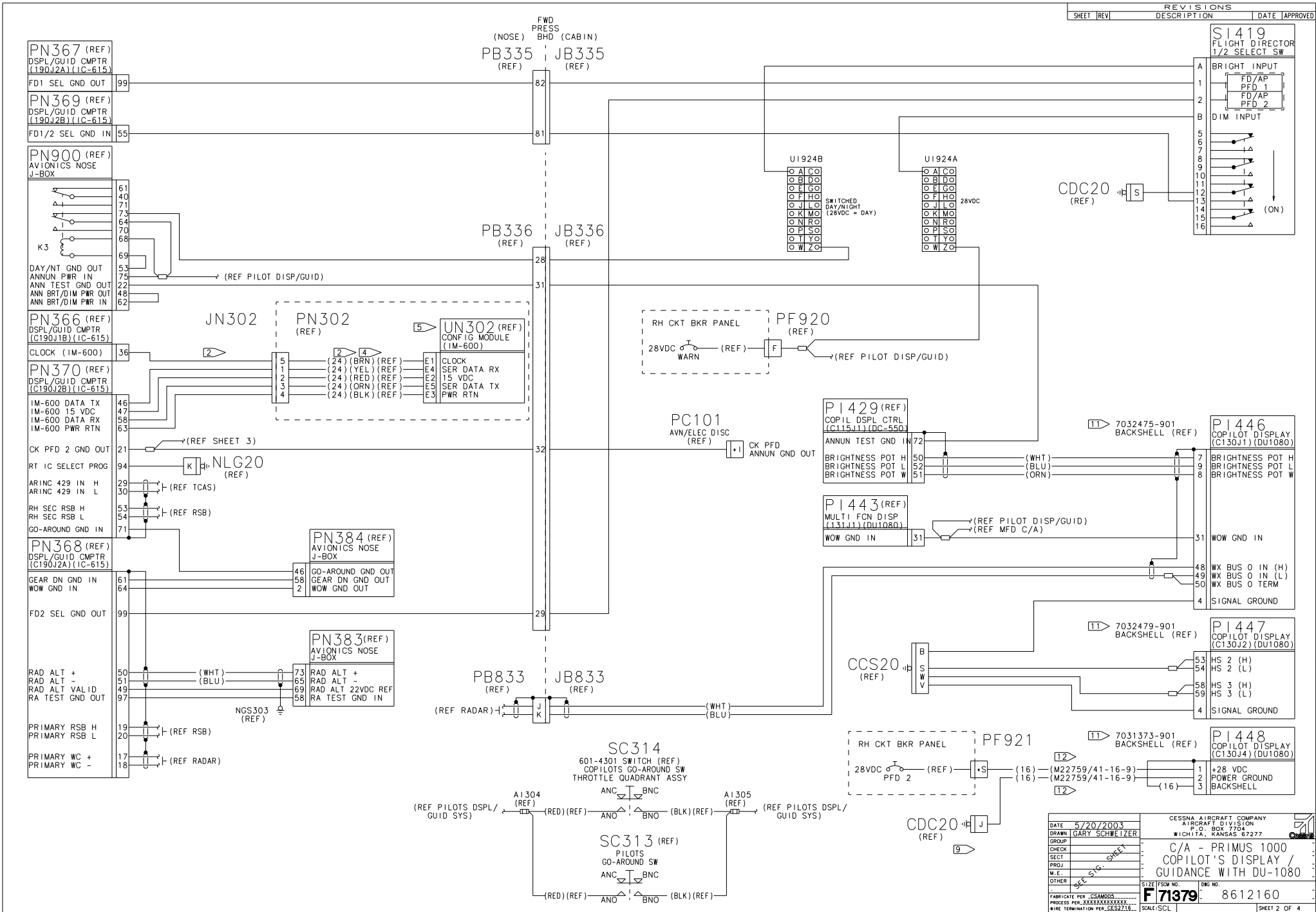
REVISIONS				
SHEET	REV	DESCRIPTION	DATE	APPROVED
4	A	BY REVISION: 1) MOVED PIN 34 FROM PN369 TO PN365 CONN. EFF: EC52743	6/30/03 GCS	SEE SIGNATURE SHEET



DATE	5/20/2003	CESSNA AIRCRAFT COMPANY
DRAWN	GARY SCHWETZER	AIRCRAFT DIVISION
GROUP		P.O. BOX 3704
CHECK		WICHITA, KANSAS 67277
SEC		
PROJ		C/A - PRIMUS 1000
M.E.		COPILOT'S DISPLAY /
OTHER		GUIDANCE WITH DU-1080
FABRICATE PER CSAM005	SIZE	FORM NO.
PROCESS PER X322222222222	<b>F71379</b>	8612160
WIRE TERMINATION PER X322222222222	SCALE: SCL	PARENT: 8612146 SHEET 1 OF 4

8612160  
A  
EC 52743

REVISIONS				
SHEET	REV	DESCRIPTION	DATE	APPROVED



DATE	5/20/2003	CESSNA AIRCRAFT COMPANY
DRAWN	GARY SCHWEITZER	AIRCRAFT DIVISION
GROUP		P.O. BOX 7794
CHECK		WICHITA, KANSAS 67277
SECT		
PROJ.		
M.E.		
OTHER		
FABRICATE PER CSAM005		C/A - PRIMUS 1000 COPILOT'S DISPLAY / GUIDANCE WITH DU-1080
PROCESS PER XXXXXXXXXXXXX		
WIRE TERMINATION PER SC82216		
SIZE	FSW NO.	DWG NO.
F71379		8612160
SCALE	SCL	SHEET 2 OF 4

**PN368**  
 DSPL/GUID CMPTR  
 (C190J2A)(IC-615)

21	PR1 429 LRN	H
22	DATA IN	L
23	SEC 429 LRN	H
24	DATA IN	L
25	LRN 429	H
26	DATA OUT	L

DC/SG BUS H  
 DC/SG BUS L

PR1 AHR5 429 IN H  
 PR1 AHR5 429 IN L

SEC AHR5 429 IN H  
 SEC AHR5 429 IN L

+28VDC IN  
 +28VDC IN  
 +28VDC IN

RS-232 TX  
 RS-232 RX  
 RS-232 GND  
 ICB +  
 ICB -

DC PWR GND  
 DC PWR GND  
 DC PWR GND

CPU LAMP RTN

SIGNAL GND  
 SIGNAL GND

BANK ANNUN OUT  
 ALT ALERT HORN

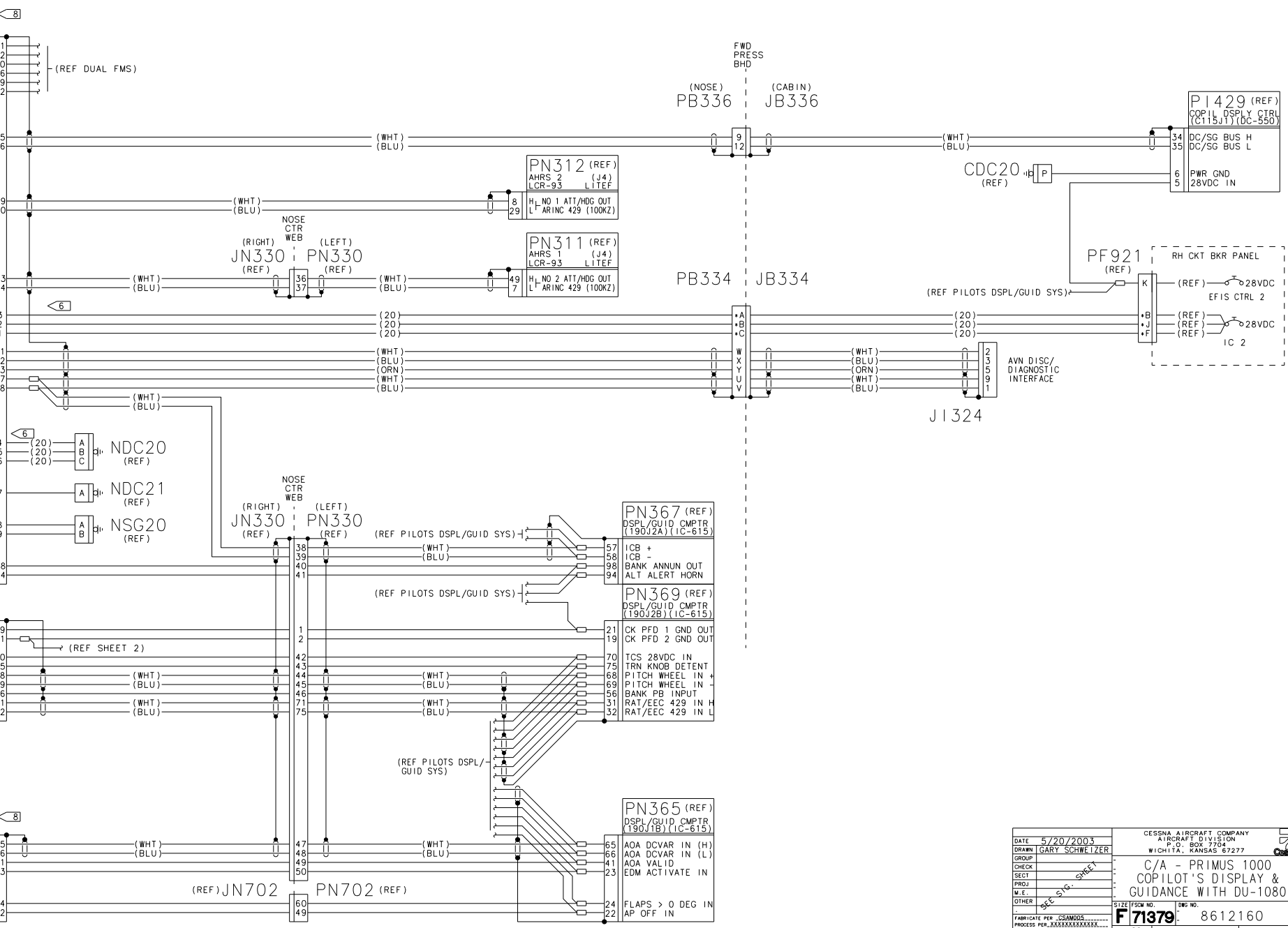
**PN370**  
 DSPL/GUID CMPTR  
 (C190J2B)(IC-615)

19	CK PFD 1 GND OUT	
20	CK PFD 2 GND OUT	
21		
70	TCS 28VDC IN	
71	TRN KB DETENT	
72	PITCH WHEEL IN +	
73	PITCH WHEEL IN -	
74	BANK PB INPUT	
75	RAT/ECC 429 IN H	
76	RAT/ECC 429 IN L	

**PN366**  
 DSPL/GUID CMPTR  
 (C190J1B)(IC-615)

65	AOA DCVAR IN (H)	
66	AOA DCVAR IN (L)	
41	AOA VALID	
23	EDM ACTIVATE IN	

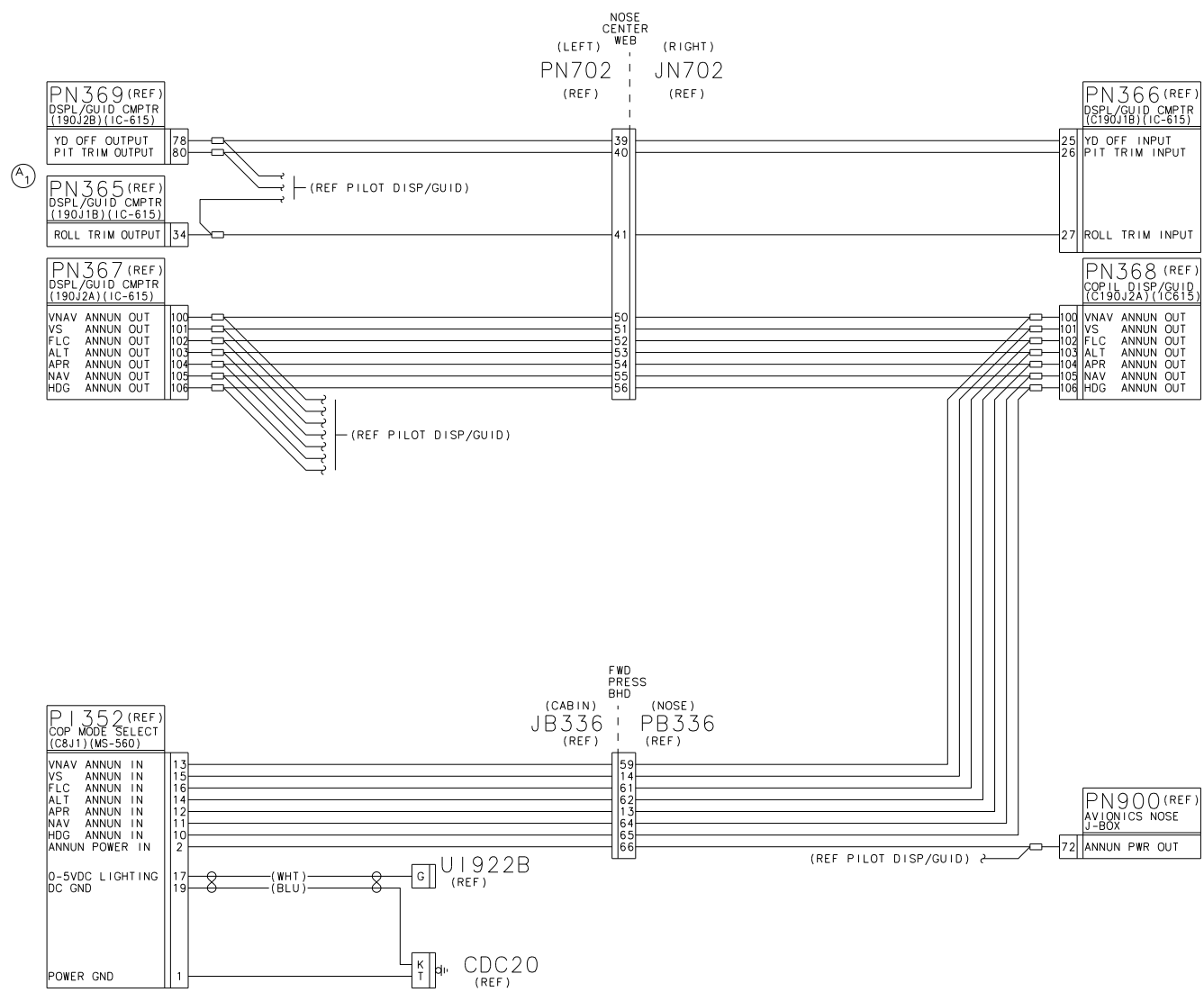
FLAPS > 0 DEG IN  
 AP OFF IN



DATE	5/20/2003	CESSNA AIRCRAFT COMPANY AIRCRAFT DIVISION P.O. BOX 7704 WICHITA, KANSAS 67277
DRAWN	GARY SCHWEIZER	
GROUP		C/A - PRIMUS 1000 COPILOT'S DISPLAY & GUIDANCE WITH DU-1080
CHECK		
SECT		
PROJ		
M.E.		
OTHER		SIZE FSCM NO. <b>F71379</b> DRG NO. 8612160 FABRICATE PER CSAMDS PROCESS PER XXXXXXXXXX WIRE TERMINATION PER 5652716
SCALE: SCL		SHEET 3 OF 4

8612160

REVISIONS				
SHEET	REV	DESCRIPTION	DATE	APPROVED



8612160 B A

DATE	5/20/2003	CESSNA AIRCRAFT COMPANY		
DRAWN	GARY SCHWEIZER	AIRCRAFT DIVISION		
CHECK		P.O. BOX 7704		
GROUP		WICHITA, KANSAS 67277		
SECT		C/A - PRIMUS 1000		
PROJ		COPILOT'S DISPLAY /		
M.E.		GUIDANCE WITH DU-1080		
OTHER				
FABRICATE PER	CSAM002	SIZE	FSM NO.	DWG NO.
PROCESS PER	XXXXXXXXXX	<b>F71379</b>		8612160
WIRE TERMINATION PER	SESZ216	SCALE	SCL	SHEET 4 OF 4