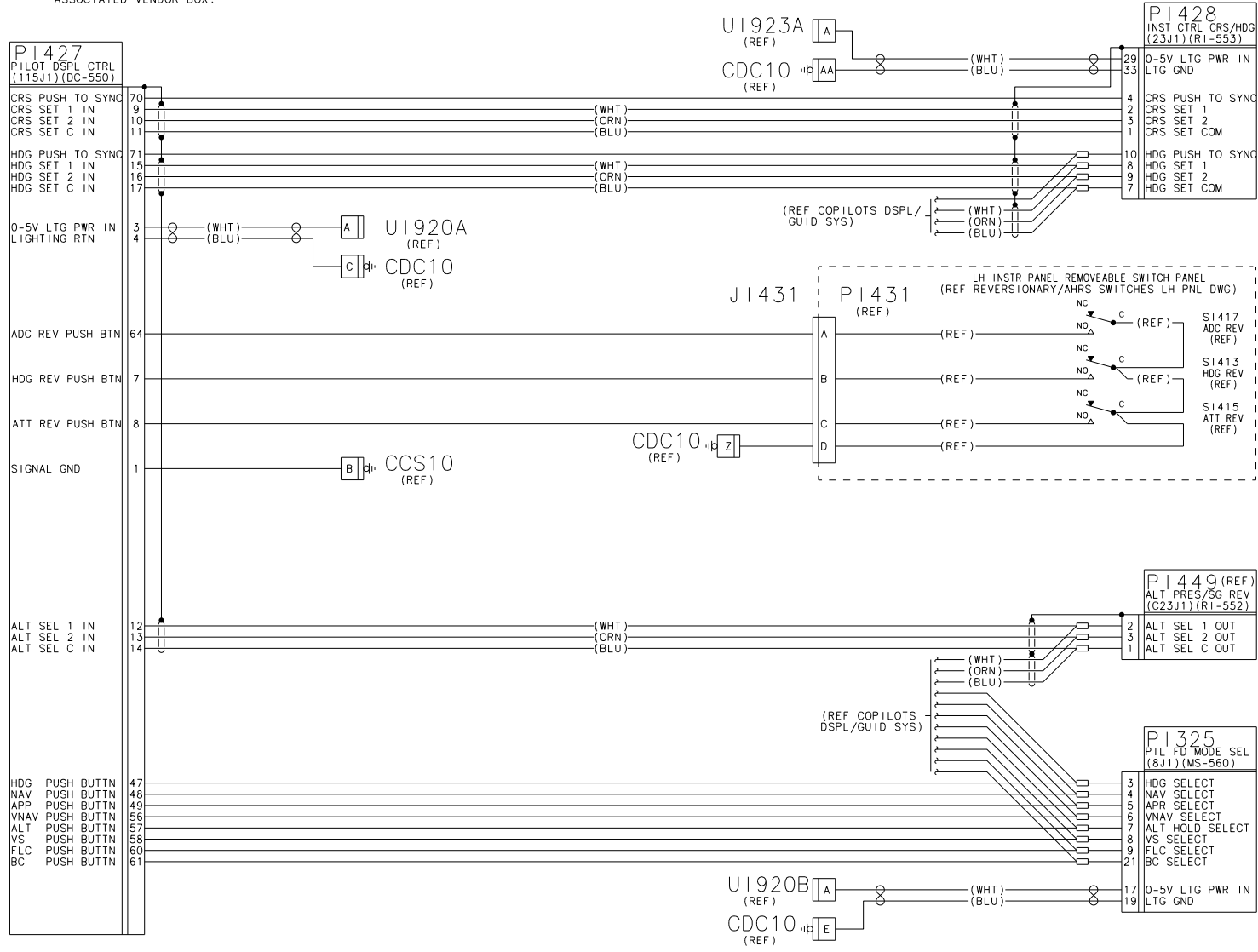


NOTES:

1. THIS DRAWING FILED IN CCD.
2. WIRES TO BE 6" MAXIMUM.
3. FOR LIGHTING & GND BLOCK/STUD LOCATIONS, REFER TO THE LIGHTING & GND BLOCK/STUD INSTL DWGS CALLED OUT ON THE AVIONICS INSTL KIT.
4. REFER TO P/L NOTE 1.
5. VENDOR SUPPLIED WIRES.
6. AN ASTERISK PRECEDING A LETTER INDICATES LOWER CASE.
7. THE CONFIGURATION MODULE IS MOUNTED ON THE BACK OF THE IC-615 TRAY. REFER TO THE AVIONICS INSTL KIT FOR INSTL DRAWING AND PART NUMBER OF THE CONFIGURATION MODULE.
8. THE POLARIZING POSTS ARE INCLUDED WITH THE CONNECTOR AS LOOSE EQUIPMENT. THEY ARE TO BE INSTALLED IN THE CONNECTOR DURING ASSEMBLY. THE POLARIZATION POSITION IS TO BE THE SAME AS THE MATING CONNECTOR ON THE ASSOCIATED VENDOR BOX.

9. REFER TO P/L NOTE 2.
10. REFER TO P/L NOTE 3.
11. UNSHIELDED WIRE SHALL BE PER M81044/12-XX-9 SINGLE CONDUCTOR SHIELDED WIRE PER M27500-XXML1T08 TWO CONDUCTOR SHIELDED WIRE PER M27500-XXML2T08 THREE CONDUCTOR SHIELDED WIRE PER M27500-XXML3T08 TWISTED PAIR PER M27500-XXML2U00 (XX = 22 AWG. EXCEPT AS NOTED)
12. REFER TO P/L NOTE 4.
13. PART OF DU-1080 BACKSHELL KIT. REFERENCE P/L NOTE 5 FOR INDIVIDUAL P/NS & ASSOCIATED REDEFES.
14. USE P/N C442722 TINNED COPPER BRAID BETWEEN AUTOPILOT SERVO BACKSHELLS AND CORRESPONDING GROUNDS.
15. PERMISSIBLE FOR WIRES TO DEVIATE FROM HIRF GUIDELINES AS DEFINED IN CSAM012.

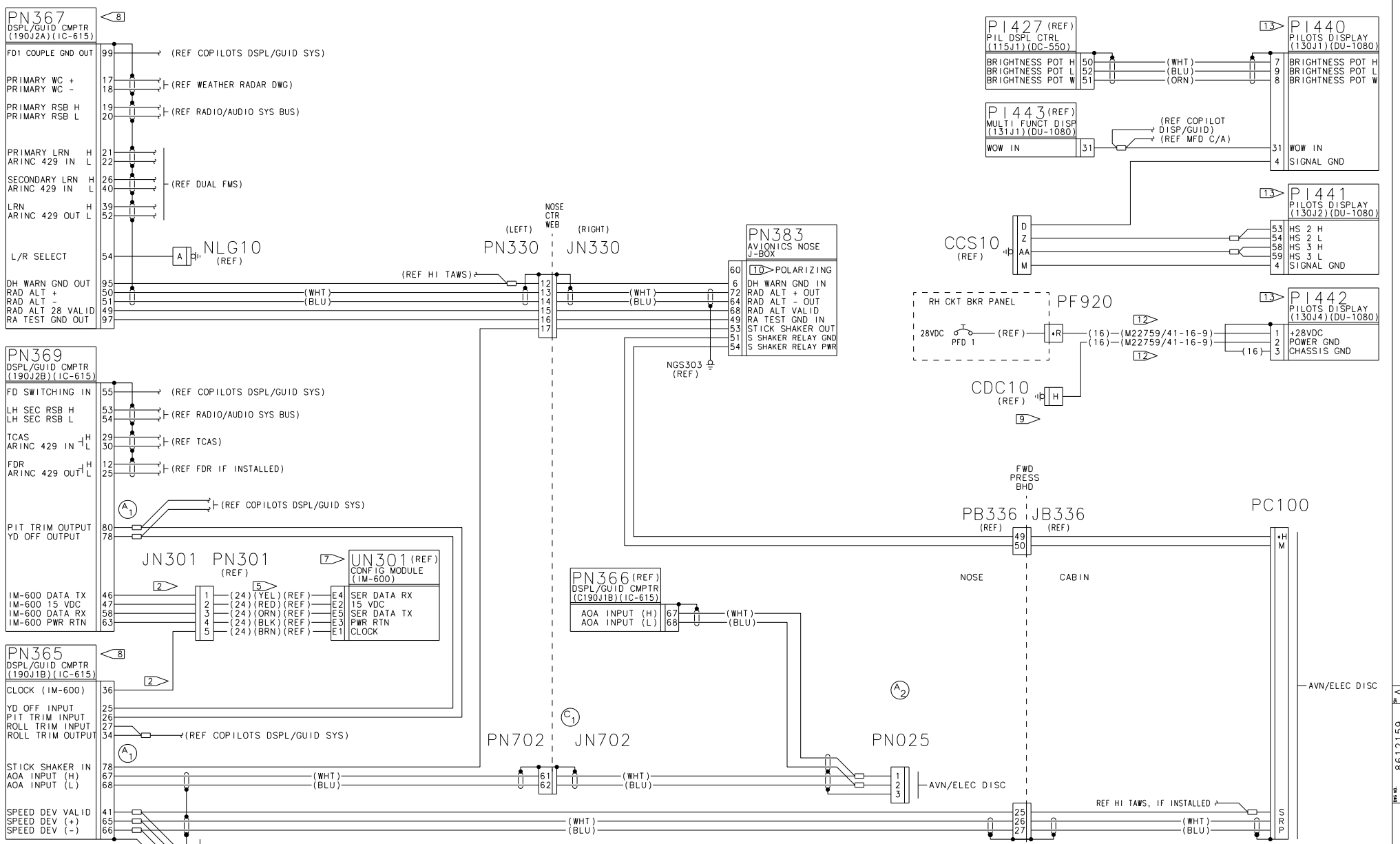


REVISIONS				
SHEET	REV	DESCRIPTION	DATE APPROVED	
2	A	BY REVISION: 1) MOVED PIN 34 FROM PN369 TO PN365 CONN. 2) DELETED PNO28 (REF) CONN & ADDED PNO25 CONN. 1PN025 WAS 41PN028 2PN025 WAS 42PN028 3PN025 WAS 14PN028 EFF: EC52743	6/30/03 CCS	SEE SIGNATURE SHEET
1	B	BY REVISION: 1) ADDED FLAGNOTE 14. 2) ADDED GND STRAP FROM AP SERVO BACKSHELL(S) TO GND STUD(S). 3) CORRECTED SC313 REF SWITCH CONTACT IDENTIFICATION. EFF: EC52743	8/19/03 CCS	SEE SIGNATURE SHEET
2	C	BY REVISION: 1) CHANGED JN/PN702 TO HARD CALLOUT. 2) CHANGED PC006 TO HARD CALLOUT. EFF: EC52743	11/4/03 CCS	SEE SIGNATURE SHEET
1	D	BY REVISION: 1) DELETED FLAGNOTE 14 & ADDED FLAGNOTE 15. 2) 20 AWG WIRE WAS P/N C442722 BRAID. EFF: EC52743	2/16/04 CCS	SEE SIGNATURE SHEET
6	E	BY REVISION: 1) PC006 WAS GPC006. EFF: EC52743	5/3/04 RS	SEE SIGNATURE SHEET
3	F	BY REVISION: 1) PC003 WAS PC103. EFF: EC 99982	03/22/05 MAM	SEE SIGNATURE SHEET

DATE	5/20/2003	CESNA AIRCRAFT COMPANY
DRAWN	GARY SCHWEITZER	AIRCRAFT DIVISION
GROUP		P.O. BOX 7704
CHECK		WICHITA, KANSAS 67277
SECT		
PROJ		
M.E.		
OTHER		
FABRICATE PER CSAM005		C/A - PRIMUS 1000
PROCESS PER XXXXXXXXXXXXX		PILOT'S DISPLAY /
WIRE TERMINATION PER 2652716		GUIDANCE WITH DU-1080
SIZE	FSOM NO.	DWG NO.
		F71379 8612159
SCALE: SCL		PARENT: 8612154 SHEET 1 OF 7

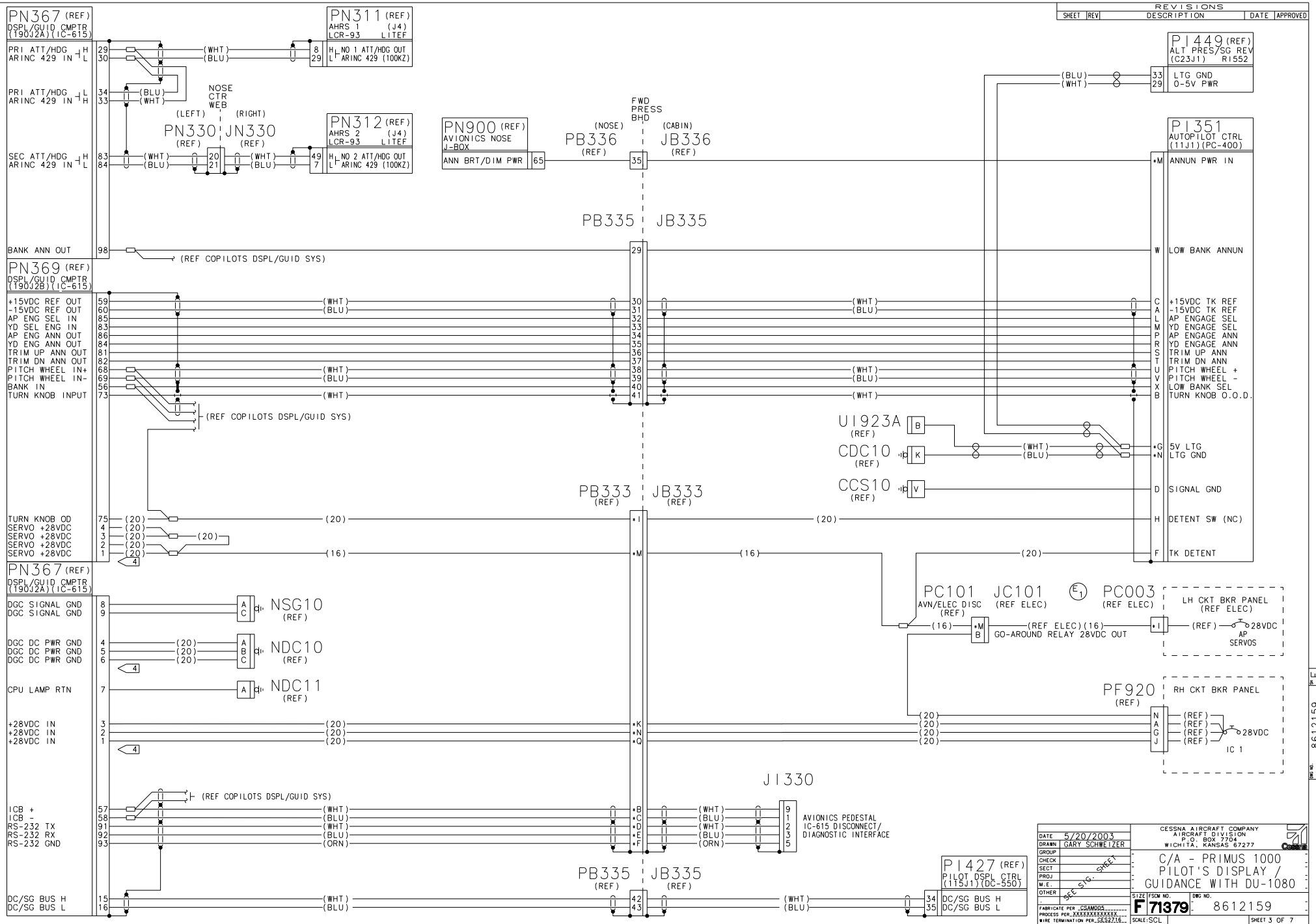
8612159
8612159

REVISIONS				
SHEET	REV	DESCRIPTION	DATE	APPROVED



DATE	5/20/2003	CESSNA AIRCRAFT COMPANY AIRCRAFT DIVISION P.O. BOX 2704 WICHITA, KANSAS 67277		
DRAWN	GARY SCHWEIZER			
GROUP		C/A - PRIMUS 1000 PILOT'S DISPLAY/ GUIDANCE WITH DU-1080		
CHECK				
SECT		F71379 8612159		
PROJ				
M.E.		SCALE: SCL		
OTHER				
FABRICATE PER	CSAMODS	SIZE	FSW NO.	DWG NO.
PROCESS PER	XXXXXXX			
WIRE TERMINATION PER	SC22728			

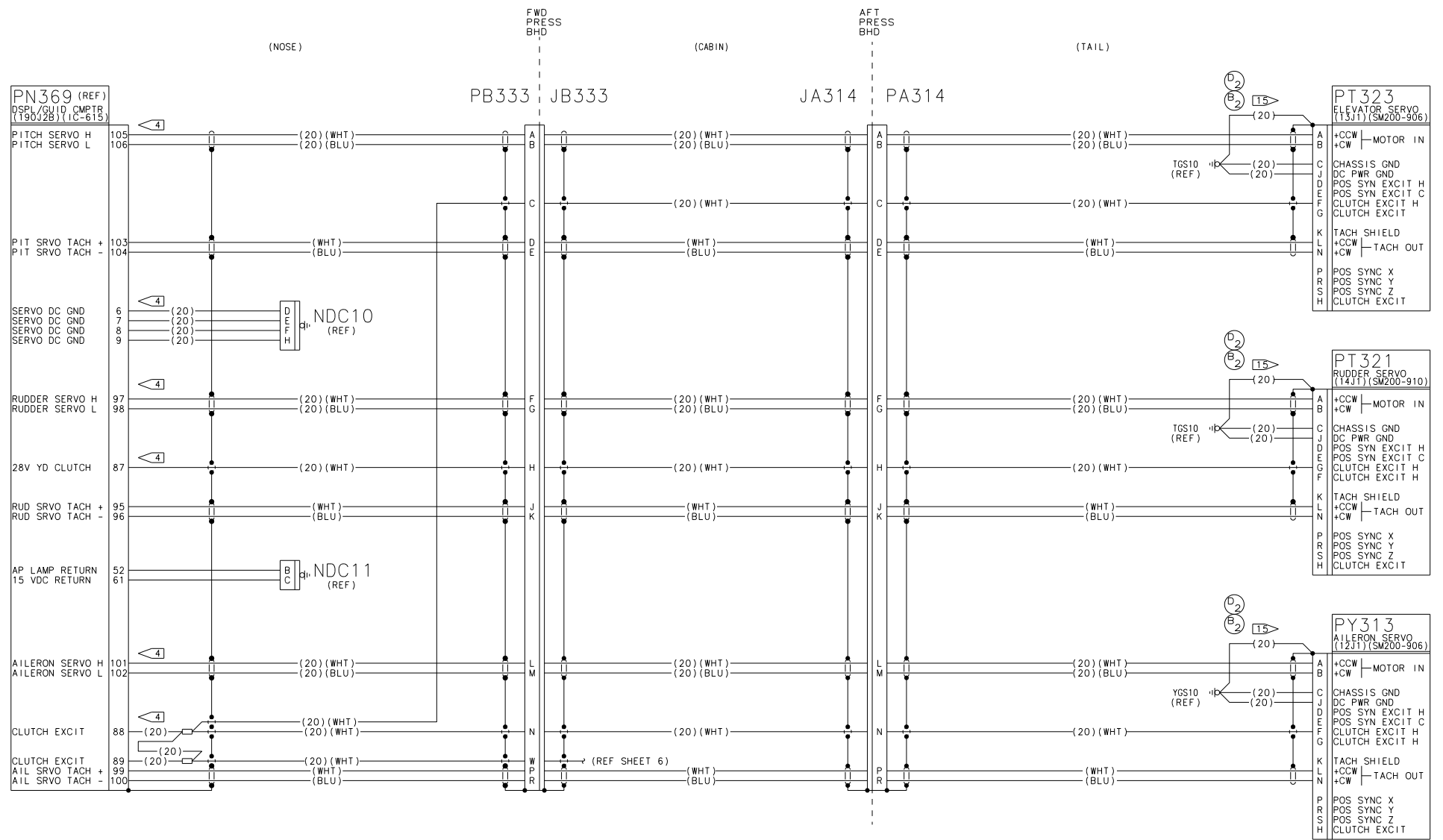
REVISIONS				
SHEET	REV	DESCRIPTION	DATE	APPROVED



DATE	5/20/2003	CESSNA AIRCRAFT COMPANY AIRCRAFT DIVISION P.O. BOX 2704 WICHITA, KANSAS 67277	
DRAWN	GARY SCHWEIZER		
GROUP		C/A - PRIMUS 1000 PILOT'S DISPLAY / GUIDANCE WITH DU-1080	
CHECK			
SECT			
PROJ.			
M.E.			
OTHER		F71379 SCALE: SCL	DWG NO. 8612159
FABRICATE PER	OSAMODS	SIZE	DWG NO.
PROCESS PER	XXXXXXX333		
WIRE TERMINATION PER	55282/2	SCALE: SCL	SHEET 3 OF 7

8612159

REVISIONS				
SHEET	REV	DESCRIPTION	DATE	APPROVED

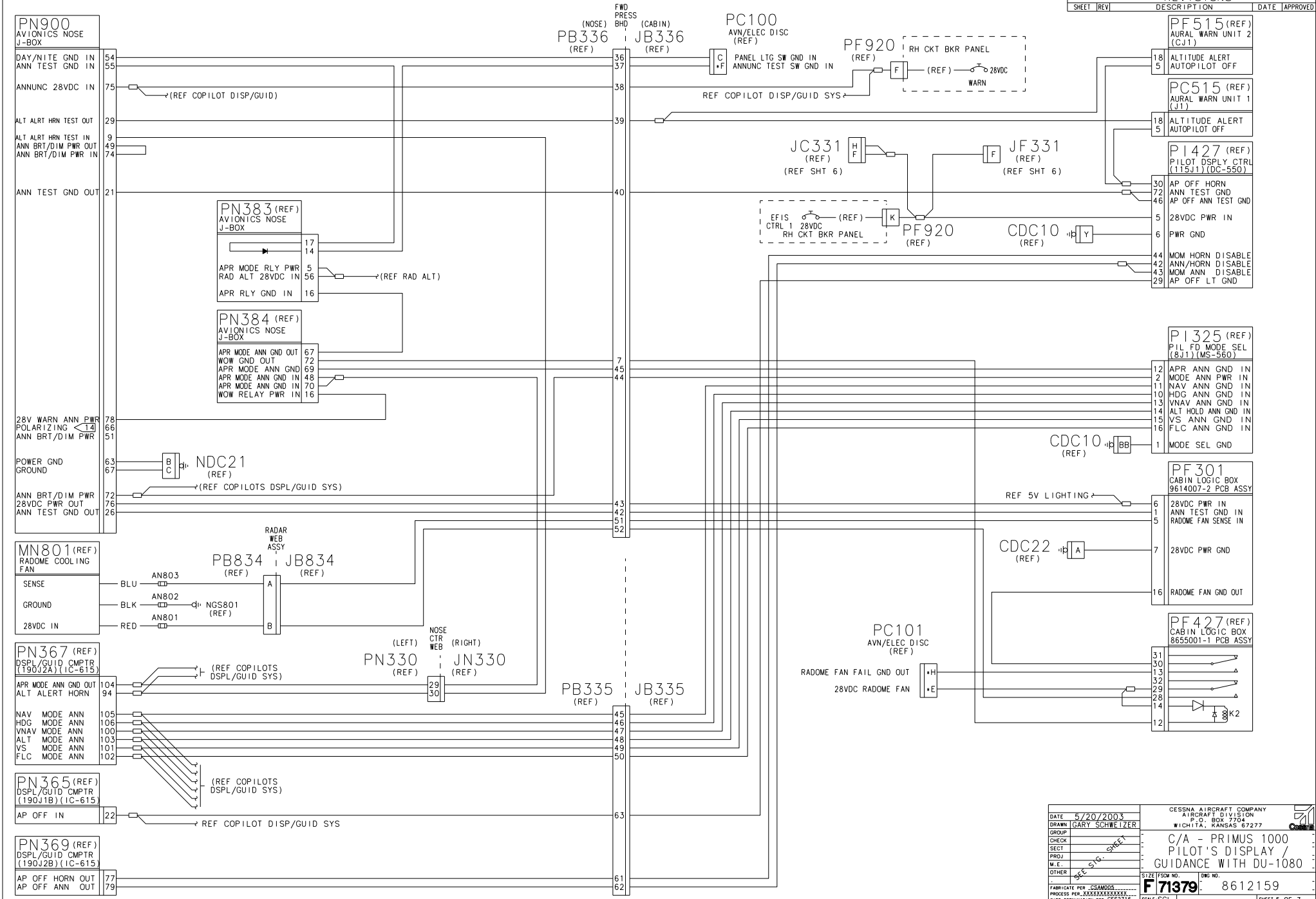


DATE	5/20/2003	CESSNA AIRCRAFT COMPANY
DRAWN	GARY SCHWEIZER	AIRCRAFT DIVISION
GROUP		P.O. BOX 2794
CHECK		WICHITA, KANSAS 67277
SECT		
PROJ		
M.E.		
OTHER		
FABRICATE PER OSAMODS		SIZE
PROCESS PER XXXX XXXX XXXX		FSW NO.
WIRE TERMINATION PER SC8272		DWG NO.
F71379		8612159
SCALE: SCL		SHEET 4 OF 7

CES FORM 1872

8612159

REVISIONS				
SHEET	REV	DESCRIPTION	DATE	APPROVED



DATE	5/20/2003	CESSNA AIRCRAFT COMPANY AIRCRAFT DIVISION P.O. BOX 7704 WICHITA, KANSAS 67277	
DRAWN	GARY SCHWEITZER		
GROUP		C/A - PRIMUS 1000	
CHECK		PILOT'S DISPLAY /	
SECT		GUIDANCE WITH DU-1080	
PROJ			
W.E.			
OTHER			
FABRICATE PER CSAM005		SHEET FROM NO.	DWG NO.
PROCESS PER 322222222222		F71379	8612159
WIRE TERMINATION PER 32222222		SCALE-SCL	SHEET 5 OF 7

8612159

REVISIONS				
SHEET	REV	DESCRIPTION	DATE	APPROVED

PN384
AVIONICS NOSE
J-BOX

GO-AROUND OUT 44
WOW OUT 32
GEAR DN GND OUT 38

POLARIZING 50
GEAR DN GND IN 37
WOW IN 12
GO-AROUND IN 45
GO-AROUND IN 47
WOW RELAY GND 33
WOW GND JUMPER 35
76

NOSE CTR WEB (RIGHT) (LEFT)
JN330 | **PN330**
(REF) | (REF)

(REF HI TAWS)

NSG20
(REF)

FWD PRESS BHD (NOSE) (CABIN)
PB336 | **JB336**
(REF) | (REF)

PB333 | **JB333**
(REF) | (REF)

PB335 | **JB335**
(REF) | (REF)

PN367 (REF)
DSPL/GUID CMPTR
(190J2A) (IC-615)

LANDING GEAR DN 61
WOW IN 64

PN369 (REF)
DSPL/GUID CMPTR
(190J2B) (IC-615)

GO AROUND GND IN 71
AP DISCONN 28VDC 90
AP DISCONN 28VDC 76
TCS 28VDC IN 70

PIT TRIM OUT - 93
PIT TRIM OUT + 92
TRIM DISCONNECT 66
TRIM DISCONNECT 67
CK PFD 2 GND OUT 19
CK PFD 1 GND OUT 21
RAT- 429 IN (H) 31
RAT- 429 IN (L) 32
NOSE GEAR IN TRANSIT 48

PN365 (REF)
DSPL/GUID CMPTR
(190J1B) (IC-615)

EDM ACTIVE IN 23
FLAPS>0 IN (AOA) 24
BC DISCRETE OUT 35

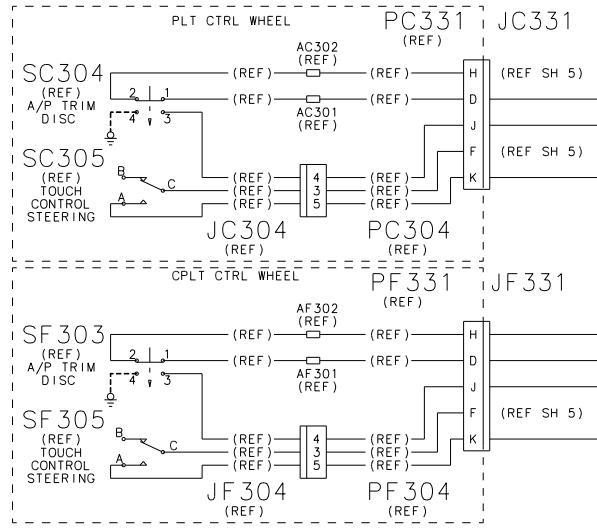
(REF COPILOT DISP/GUID)
(REF COPILOT DISP/GUID)
(REF HI TAWS, IF INSTALLED)

P1352 (REF)
COP FD MODE SEL
(C8J1) (MS-560)

BC ANNUN GND IN 22

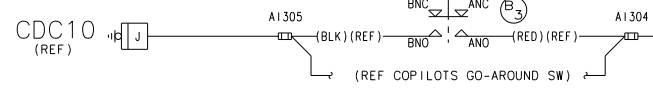
P1325 (REF)
PIL FD MODE SEL
(8J1) (MS-560)

BC ANNUN GND IN 22



SC313 (REF)

THROTTLE QUADRANT ASSY



P1427 (REF)
PILOT DSPLY CTRL
(115J1) (DC-550)

28VDC AP ENGAGE IN 27
TCS 28VDC IN 32
AP DISCONN 28VDC 33

PF427
CABIN LOGIC BOX
8655001-1 PCB

45
43
46
44

PC101
AVN/ELEC DISC

R ELEC TRIM DISC

A GO AROUND GROUND OUT
U LANDING GEAR DOWN GND
C WOW GROUND IN
C GO-AROUND GND IN

A AP ENGAGE CLUTCH EXCITE
P PULSE TRIM DOWN
J PULSE TRIM UP
L TRIM DISCONNECT
V TRIM DISCONNECT
K CK PFD 1 ANNUN GND OUT

PC100 (REF) **JC100** (REF ELECT)

RAT 429 OUT (H)
RAT 429 OUT (L)
NOSE GEAR IN TRANSIT GROUND

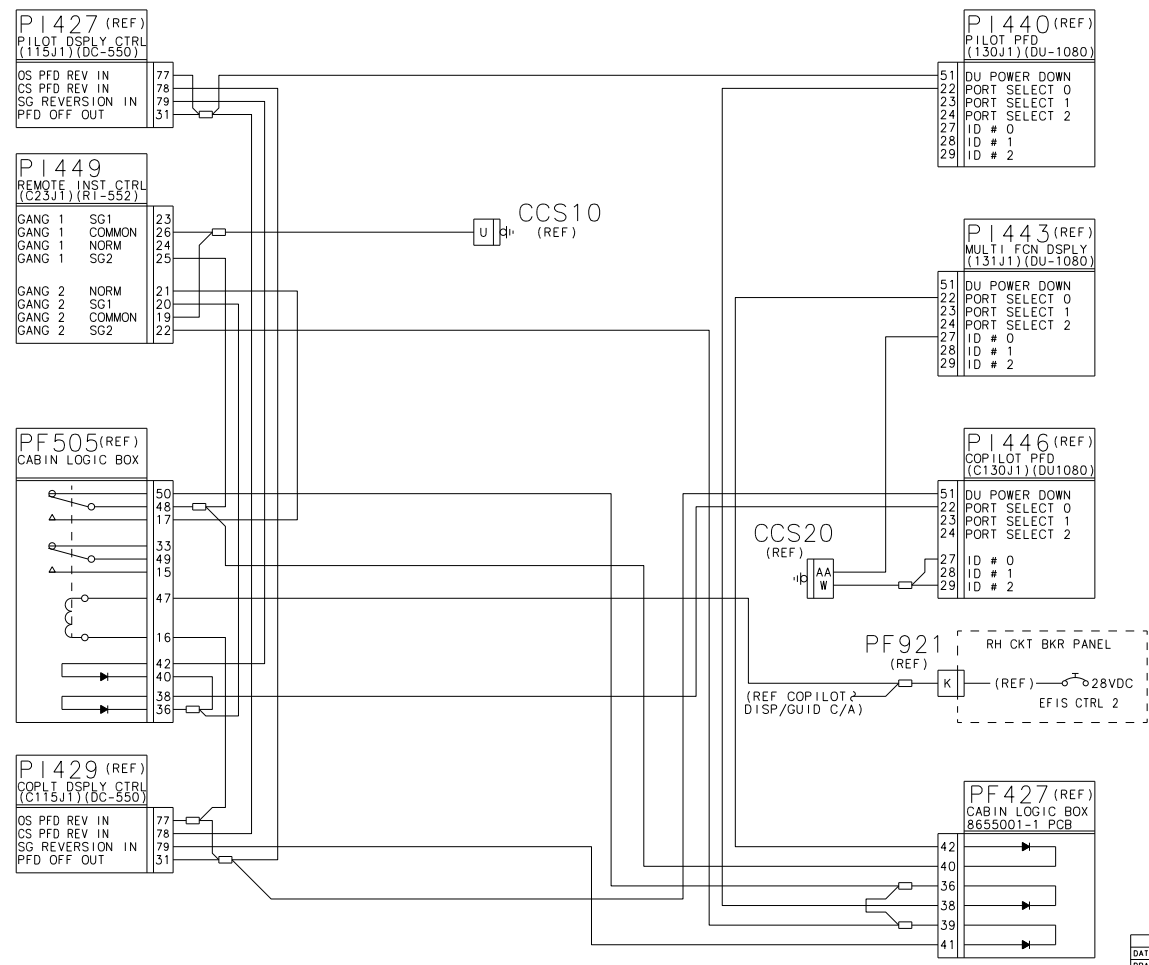
CABIN ALT > 14.5K = GND
FLAPS = 0 DEG = GND
FLAP POSITION GND

CDC11 (REF) **AVN/ELEC DISC** **PC006** (REF)

DATE	5/20/2003	CESSNA AIRCRAFT COMPANY
DRAWN	GARY SCHWEIZER	AIRCRAFT DIVISION
CHECK		P.O. BOX 7704
GROUP		WICHITA, KANSAS 67277
SECT		
PROJ		
M.E.		
OTHER		
FABRICATE PER	CSAMDS	
PROCESS PER	XXXXXXXXXX	
WIRE TERMINATION PER	5652716	
SIZE	FSM NO.	FIG NO.
	F71379	8612159
SCALE	SCL	
		SHEET 6 OF 7

8612159

REVISIONS				
SHEET	REV	DESCRIPTION	DATE	APPROVED



DATE	5/20/2003	CESSNA AIRCRAFT COMPANY		
DRAWN	GARY SCHWEIZER	AIRCRAFT DIVISION		
CHECK		P.O. BOX 7704		
SECT		WICHITA, KANSAS 67277		
PROJ		C/A - PRIMUS 1000		
M.E.		PILOT'S DISPLAY /		
OTHER		GUIDANCE WITH DU-1080		
FABRICATE PER	CSAMDS	SIZE	FSM NO.	DWG NO.
PROCESS PER	XXXXXXXXXX	F71379		8612159
WIRE TERMINATION PER	SESZ16	SCALE	SCL	SHEET 7 OF 7

8612159 B/A