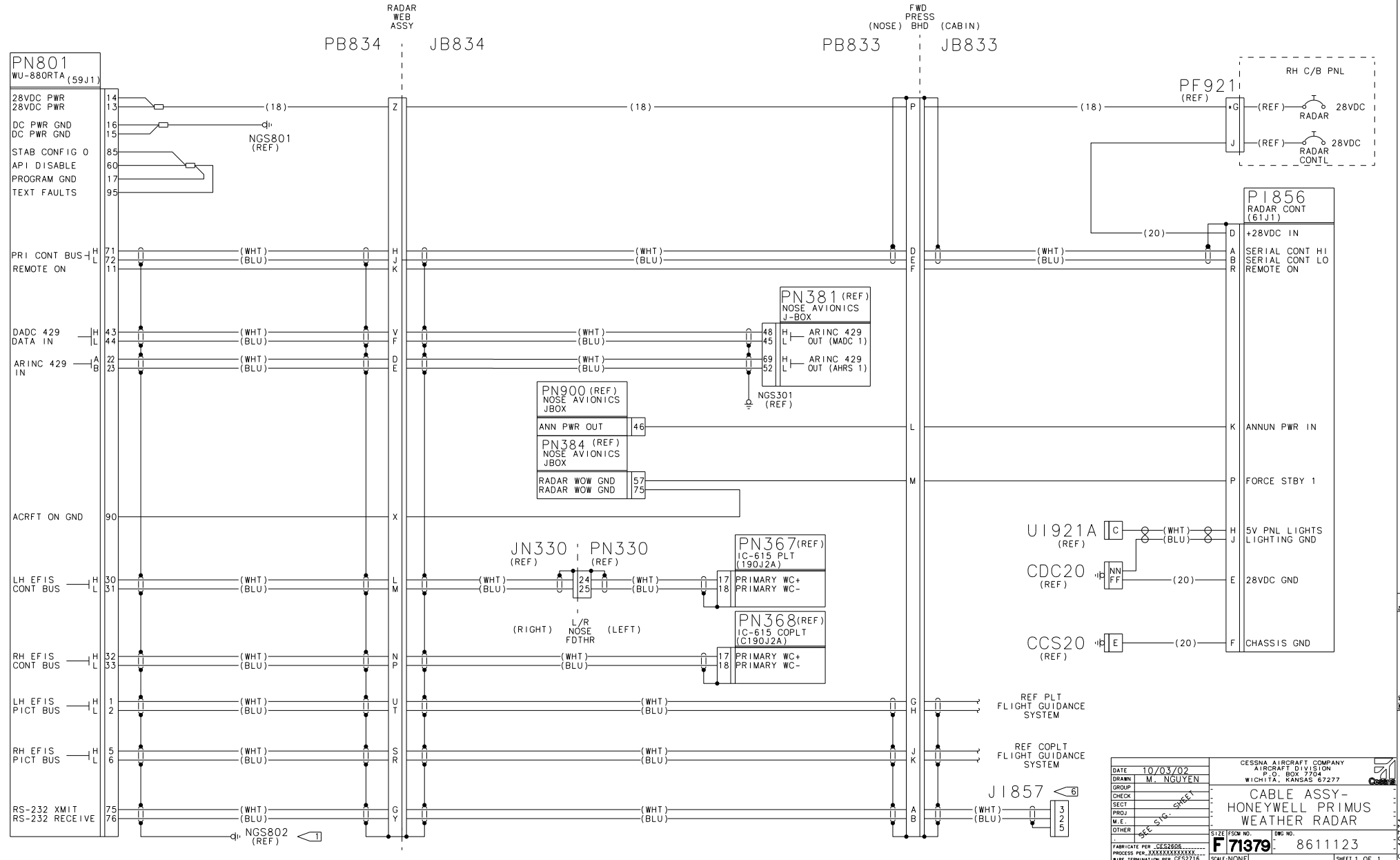


NOTES:

1. PERMISSIBLE TO DEVIATE FROM HIRF GUIDELINES IN CSAM012.
2. ALL WIRES TO BE PER M81044/12-\*\*-9 \*\* = 22AWG, EXCEPT AS NOTED.
3. SHIELDED PAIR PER M27500-\*\*ML2T08 ALL TWISTED PAIR PER M27500-\*\*ML2U00 (\*\* = 22 GAUGE, EXCEPT AS NOTED)
4. DRAWING FILED IN CCD.
5. REFER TO GND BLOCK/STUD INSTL DWG FOR GND BLOCK/STUD LOCATIONS.
6. CONNECTOR FOR RS232 TERMINAL DEVICE DIGNOSTIC INTERFACE ONLY. REFERENCE TEST PORT INSTL DWG FOR LOCATION.
7. AN ASTERISK INDICATES LOWER CASE LETTERS.

REVISIONS		
SHEET	REV	DATE



DATE	10/03/02	CESNA AIRCRAFT COMPANY
DRAWN	M. NGUYEN	AIRCRAFT DIVISION
CHECK		P.O. BOX 3704
SEC		WICHITA, KANSAS 67277
PROJ		CABLE ASSY- HONEYWELL PRIMUS WEATHER RADAR
M.E.		
OTHER		
FABRICATE PER	CES2606	SIZE
PROCESS PER	XXXXXXX	DWG NO.
WIRE TERMINATION PER	CES2716	<b>F71379</b>
		8611123
		SCALE: NONE

8611123  
C 49734  
W.O. XL2943