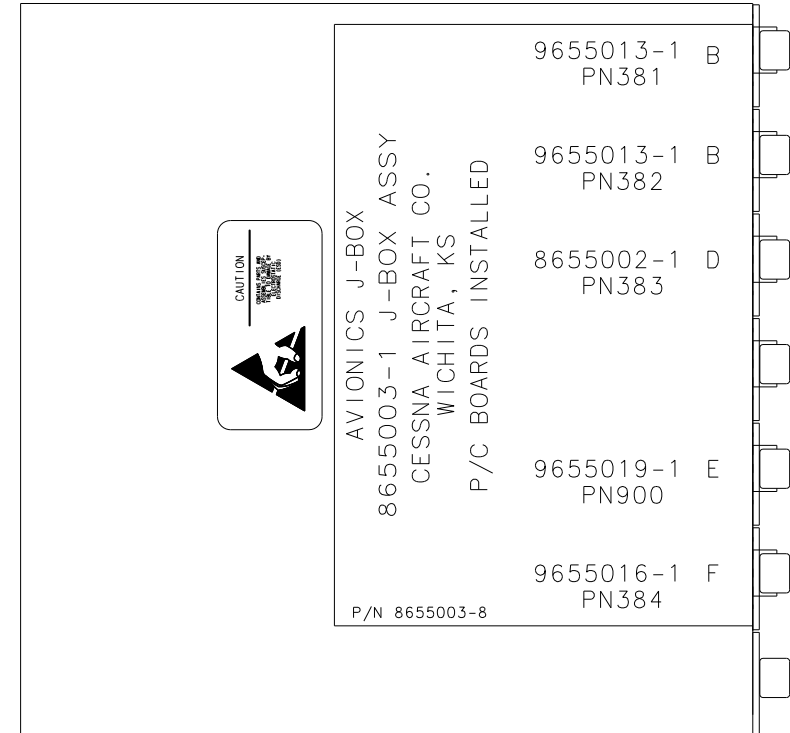


REVISIONS				
SHEET	REV	DESCRIPTION	DATE	APPROVED
GEN	A	COMPLETELY REDRAWN	04/19/05 MAM	SEE SIGNATURE SHEET
EFF: EC 99982				

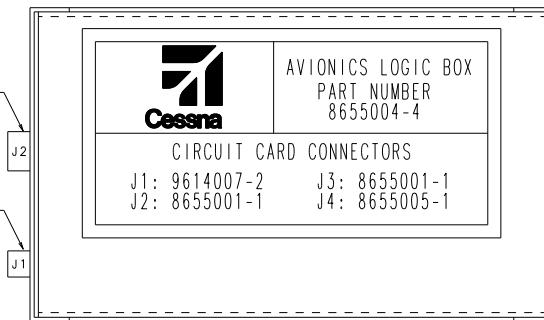
INDEX

SHEET	REFDES	SUBJECT
1		INDEX, J-BOX/LOGIC BOX COVERS
2		560 EXCEL P-1000 DISPLAY/GUIDANCE SYSTEM BLOCK DIAGRAM
3	PN381	B CARD NOSE J-BOX-JUMPER BOARD
4	PN382	B CARD NOSE J-BOX-JUMPER BOARD
5	PN383	D CARD NOSE J-BOX-SWITCHING/JUMPER BOARD
6	PN900	E CARD NOSE J-BOX-LIGHTING/DIM/TEST PCB
7	PN384	F CARD NOSE J-BOX-SWITCHING/JUMPER BOARD
8	PN384	F CARD SCHEMATIC
9	PF301	FAN FAIL/SENSE LOGIC BOARD (LOCATED IN CABIN AVIONICS LOGIC BOX)
10	PF427	EFIS INTERFACE BOARD (LOCATED IN CABIN AVIONICS LOGIC BOX)
11	PF505	STDBY CTRL HEAD LTG BOARD (LOCATED IN CABIN AVIONICS LOGIC BOX)
12	PF701	FMS INTERFACE BOARD (LOCATED IN CABIN AVIONICS LOGIC BOX)



8655001-1 PC BOARD ASSY
PF427

9614007-2 PC BOARD ASSY
PF301



8655001-1 PC BOARD ASSY
PF701

8655005-1 PC BOARD ASSY
PF505

CABIN AVIONICS LOGIC BOX ASSY P/N 8655004-4
CONTAINS J1:9614007-2 FAN SENSE LOGIC BOARD
J2:8655001-1 EFIS INTERFACE BOARD
J3:8655001-1 FMS INTERFACE BOARD
J4:8655005-1 STDBY CTRL HEAD LTG BOARD

CABIN AVIONICS LOGIC BOX

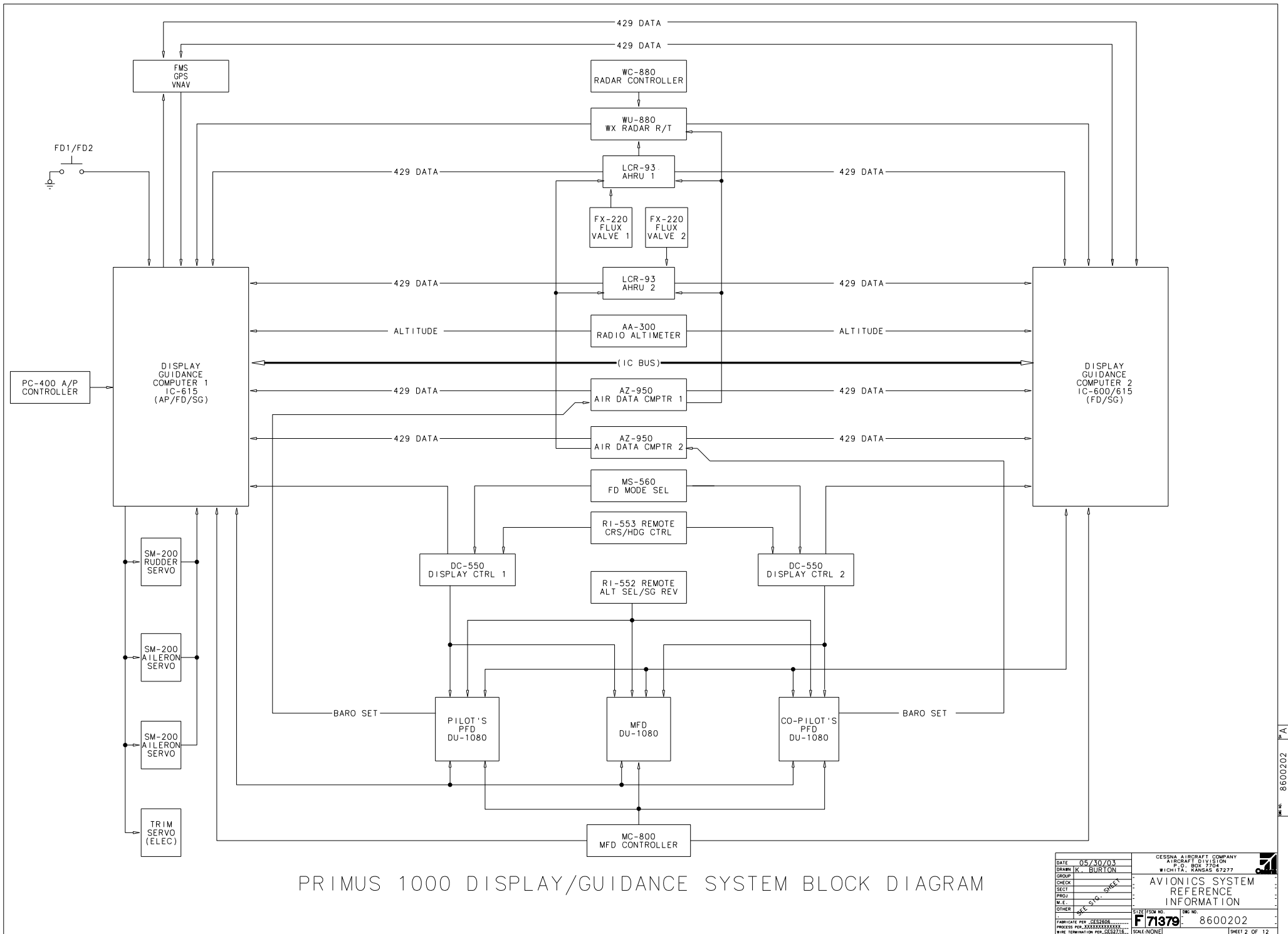
NOSE AVIONICS J-BOX

FOR REFERENCE ONLY

NOTES:

- 1) THE CONTENTS OF THIS DRAWING ARE FOR REFERENCE ONLY. IF THERE IS A CONFLICT BETWEEN THE CONTENTS OF THIS DRAWING AND A CABLE ASSY FOR A PARTICULAR AIRCRAFT, THE CONTENTS OF THE CABLE ASSY SHALL TAKE PRIORITY.
- 2) ALL OTHER NOTES PERTAINING TO A PARTICULAR SHEET SHALL BE FOUND ON THAT SHEET.
- 3) THIS DRAWING IS FILED IN CCD.

DATE	05/30/03	CESSNA AIRCRAFT COMPANY
DRAWN	K. BURTON	AIRCRAFT DIVISION
GROUP		P.O. BOX 7704
CHECK		WICHITA, KANSAS 67277
SECT		
PROJ		
M.E.		
OTHER		
FABRICATE PER	CESS2608	SIZE FSCM NO.
PROCESS PER	XXXXXXX	DRG NO.
WIRE TERMINATION PER	CESS2716	F71379 8600202
		SCALE: NONE
		SHEET 1 OF 12



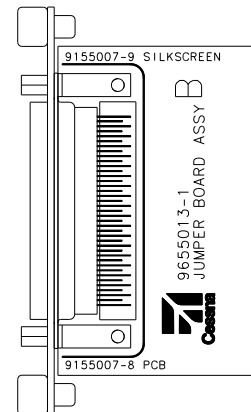
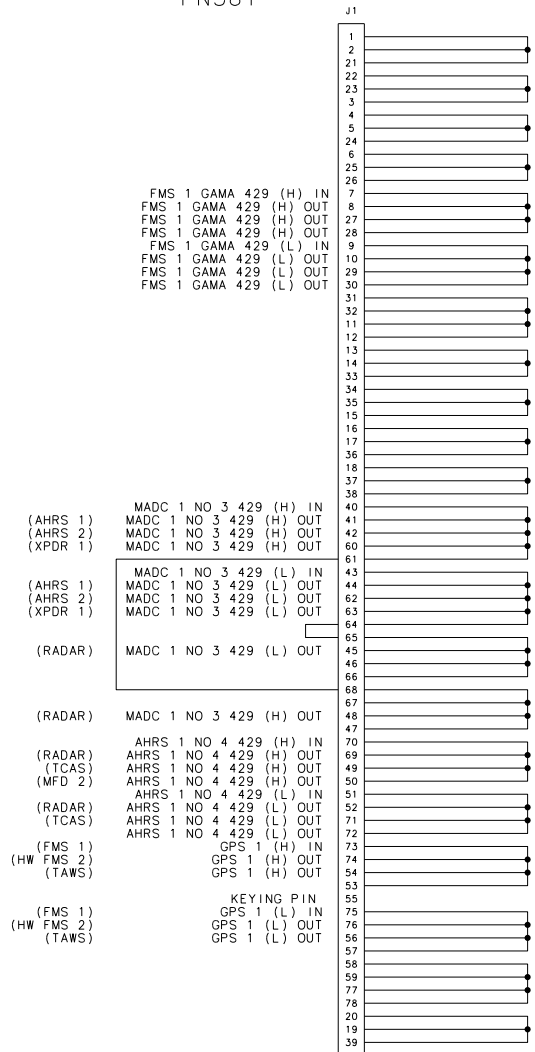
PRIMUS 1000 DISPLAY/GUIDANCE SYSTEM BLOCK DIAGRAM

DATE	05/30/03	CESSNA AIRCRAFT COMPANY
DRAWN	K. BURTON	AIRCRAFT DIVISION
GROUP		P.O. BOX 7704
CHECK		WICHITA, KANSAS 67277
TEST		
PROJ		
M.E.		
OTHER		
F71379		AVIONICS SYSTEM REFERENCE INFORMATION
FABRICATE PER 242308	8600202	
PROCESS PER 805500000000		
WIRE TERMINATION PER 6022716		

8600202

REVISIONS				
SHEET	REV	DESCRIPTION	DATE	APPROVED

PN381

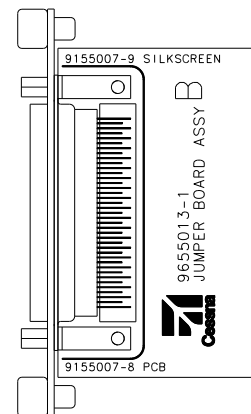
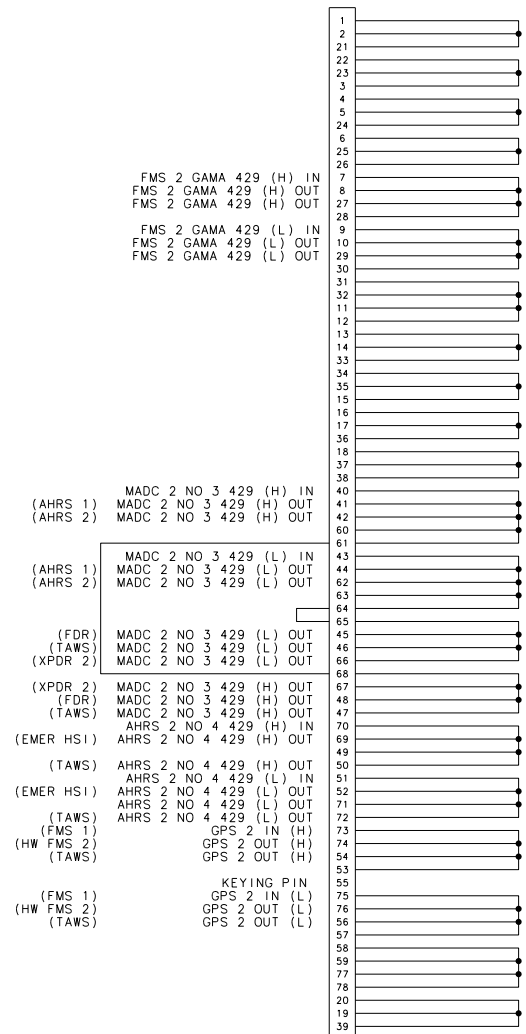


NOSE J-BOX
B CARD SCHEMATIC
JUMPER BOARD ASSY

DATE	05/30/03	CESSNA AIRCRAFT COMPANY
DRAWN	K. BURTON	AIRCRAFT DIVISION
GROUP		P.O. BOX 7704
CHECK		WICHITA, KANSAS 67277
SECT		
PROJ		
M.E.		
OTHER		
FABRICATE PER CES2806		AVIONICS SYSTEM REFERENCE INFORMATION
PROCESS PER XXXXXXXXXX		
WIRE TERMINATION PER SC22726		SIZE (FSW NO.)
SCALE: SCL		DWG NO.
		F71379
		8600202
		SHEET 3 OF 12

PN382

J1

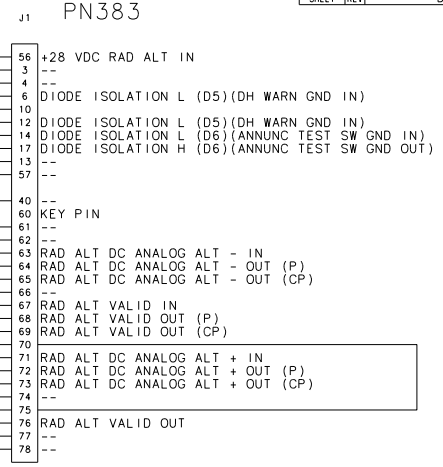
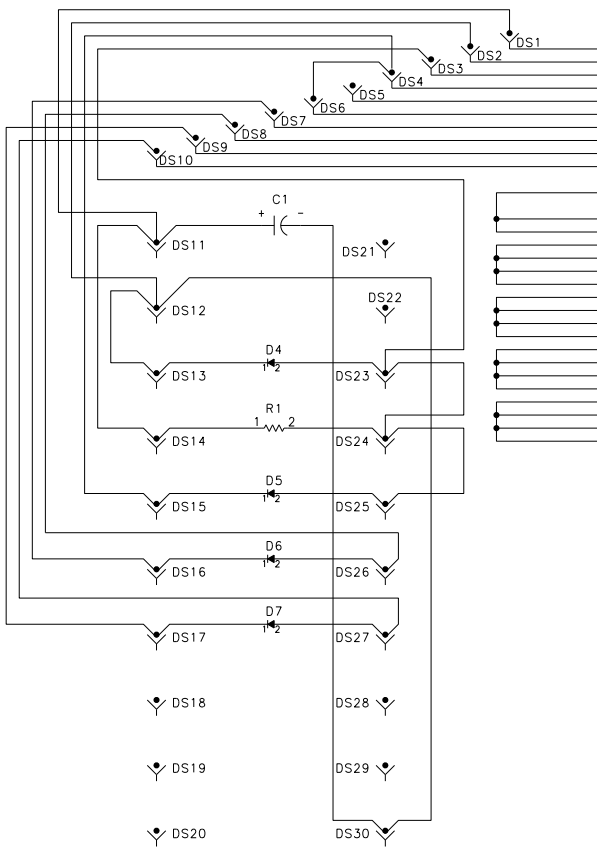
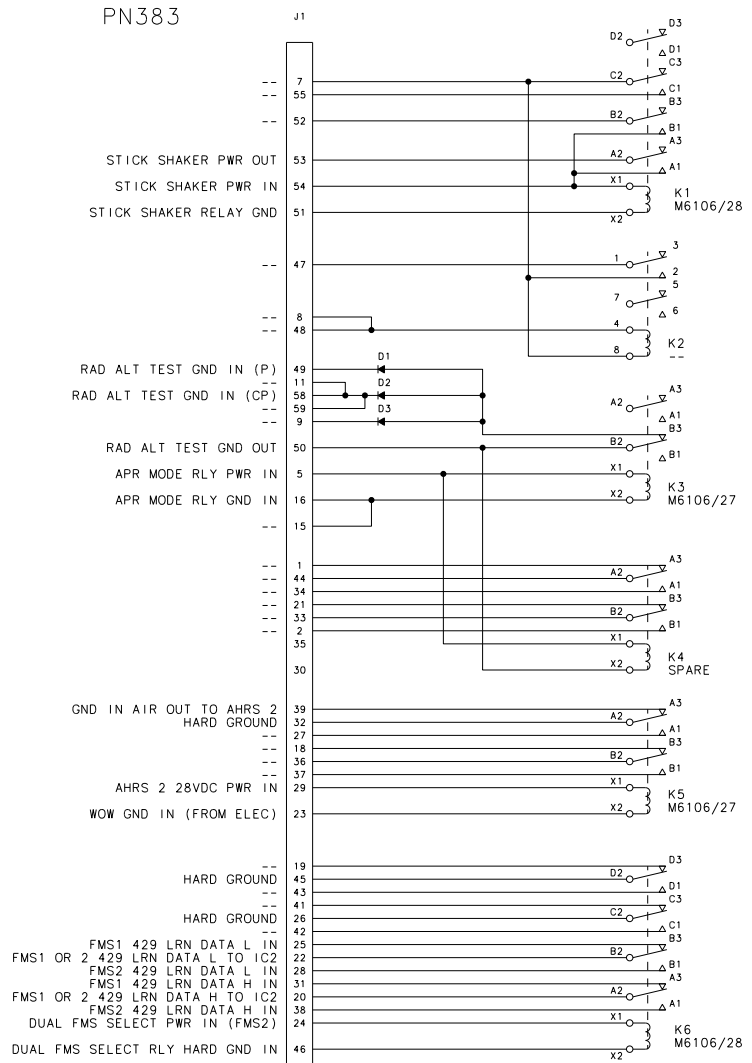


NOSE J-BOX
B CARD SCHEMATIC
JUMPER BOARD ASSY

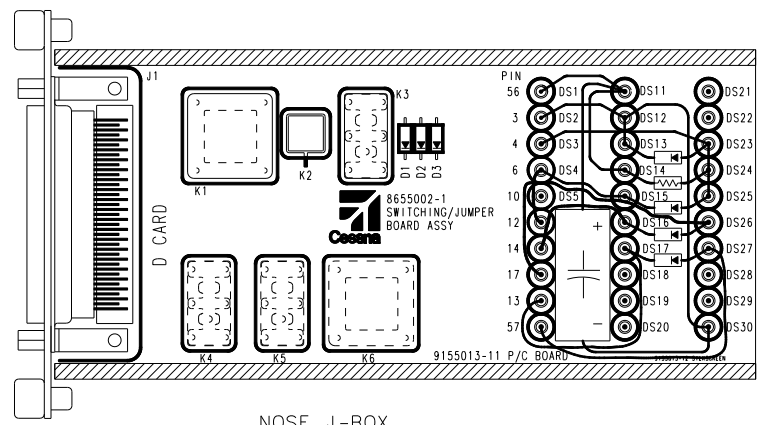
DATE	05/30/03	CESSNA AIRCRAFT COMPANY
DRAWN	K. BURTON	AIRCRAFT DIVISION
GROUP		P.O. BOX 7704
CHECK		WICHITA, KANSAS 67277
SECT		
PROJ		
M.E.		
OTHER		
FABRICATE PER CES2806		SIZE (FSW NO.)
PROCESS PER XXXXXXXXXX		DWG NO.
WIRE TERMINATION PER SC2272		F71379
SCALE/SCL		8600202
		SHEET 4 OF 12

PN383

REVISIONS				
SHEET	REV	DESCRIPTION	DATE	APPROVED

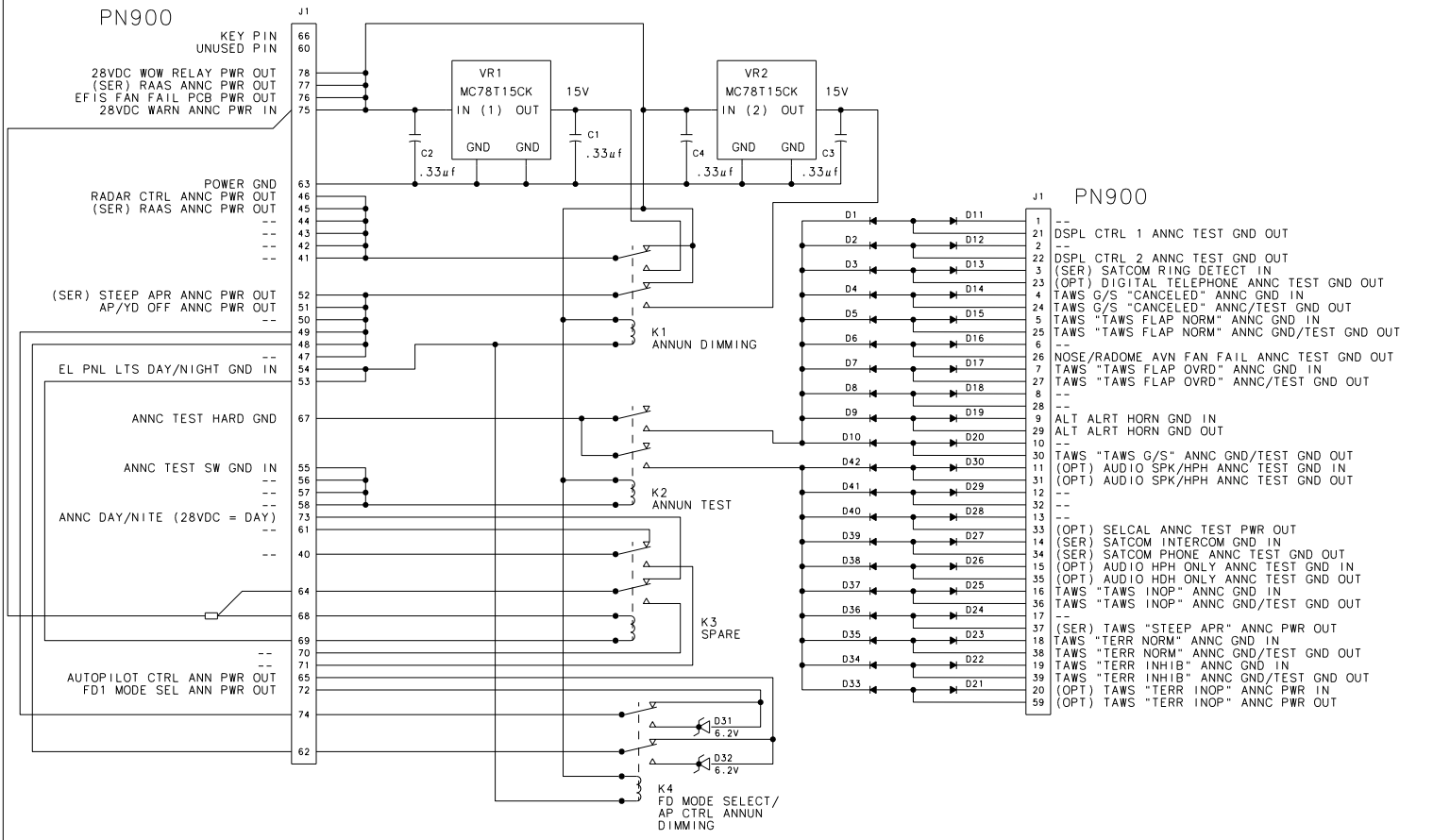


REF DES	PART NUMBER	DESCRIPTION
C1	TVA1312	CAPACITOR
D1	1N4006	DIODE
D2	1N4006	DIODE
D3	1N4006	DIODE
D4	1N4006	DIODE
D5	1N4006	DIODE
D6	1N4006	DIODE
D7	1N4006	DIODE
DS1	1559-2	TURRET POST
DS2	1559-2	TURRET POST
DS3	1559-2	TURRET POST
DS4	1559-2	TURRET POST
DS5	1559-2	TURRET POST
DS6	1559-2	TURRET POST
DS7	1559-2	TURRET POST
DS8	1559-2	TURRET POST
DS9	1559-2	TURRET POST
DS10	1559-2	TURRET POST
DS11	1559-2	TURRET POST
DS12	1559-2	TURRET POST
DS13	1559-2	TURRET POST
DS14	1559-2	TURRET POST
DS15	1559-2	TURRET POST
DS16	1559-2	TURRET POST
DS17	1559-2	TURRET POST
DS18	1559-2	TURRET POST
DS19	1559-2	TURRET POST
DS20	1559-2	TURRET POST
DS21	1559-2	TURRET POST
DS22	1559-2	TURRET POST
DS23	1559-2	TURRET POST
DS24	1559-2	TURRET POST
DS25	1559-2	TURRET POST
DS26	1559-2	TURRET POST
DS27	1559-2	TURRET POST
DS28	1559-2	TURRET POST
DS29	1559-2	TURRET POST
DS30	1559-2	TURRET POST
J1	S2968-60	CONNECTOR
	DD78M4R7MT2C1235.4	REF P/N FOR J1 CONNECTOR
K1	M6106/28-003	RELAY
K2	NOT INSTALLED	RELAY
K3	M6106/27-003	RELAY
K4	NOT INSTALLED	RELAY
K5	M6106/27-003	RELAY
K6	M6106/28-003	RELAY
R1	CM3908-472G	RESISTOR

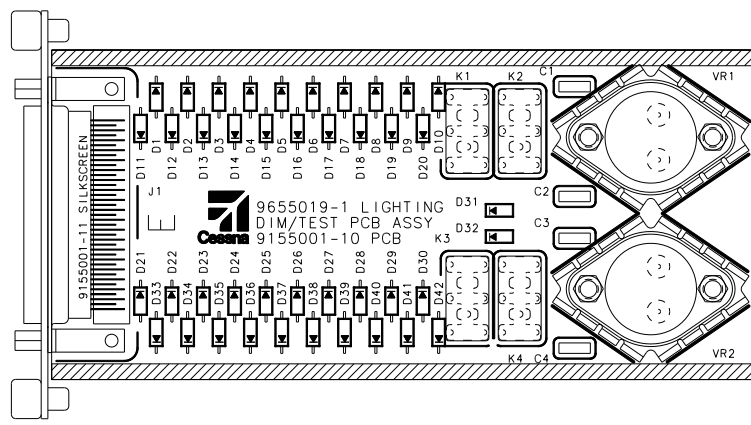


NOSE J-BOX
D CARD SWITCHING/JUMPER PCB ASSY

DATE	05/30/03	CESSNA AIRCRAFT COMPANY AIRCRAFT DIVISION P.O. BOX 7704 WICHITA, KANSAS 67277
DRAWN	K. BURTON	
GROUP		AVIONICS SYSTEM REFERENCE INFORMATION
CHECK		
SECT		
PROJ		
M.E.		
OTHER		SIZE FSCM NO. F171379 DWG NO. 8600202 FABRICATE PER CESS2260 PROCESS PER CESS2260 WIRE TERMINATION PER CESS2216
SHEET 1 OF 12		SHEET 5 OF 12



REF DES	PART NUMBER	DESCRIPTION	NOTE
C1	CK08BX334K	CAPACITOR .33uF	
C2	CK08BX334K	CAPACITOR .33uF	
C3	CK08BX334K	CAPACITOR .33uF	
C4	CK08BX334K	CAPACITOR .33uF	
D1	1N4006	DIODE	
D2	1N4006	DIODE	
D3	1N4006	DIODE	
D4	1N4006	DIODE	
D5	1N4006	DIODE	
D6	1N4006	DIODE	
D7	1N4006	DIODE	
D8	1N4006	DIODE	
D9	1N4006	DIODE	
D10	1N4006	DIODE	
D11	1N4006	DIODE	
D12	1N4006	DIODE	
D13	1N4006	DIODE	
D14	1N4006	DIODE	
D15	1N4006	DIODE	
D16	1N4006	DIODE	
D17	1N4006	DIODE	
D18	1N4006	DIODE	
D19	1N4006	DIODE	
D20	1N4006	DIODE	
D21	1N4006	DIODE	
D22	1N4006	DIODE	
D23	1N4006	DIODE	
D24	1N4006	DIODE	
D25	1N4006	DIODE	
D26	1N4006	DIODE	
D27	1N4006	DIODE	
D28	1N4006	DIODE	
D29	1N4006	DIODE	
D30	1N4006	DIODE	
D31	1N5341B	DIODE 6.2V ZENNER 5W	
D32	1N5341B	DIODE 6.2V ZENNER 5W	
D33	1N4006	DIODE	
D34	1N4006	DIODE	
D35	1N4006	DIODE	
D36	1N4006	DIODE	
D37	1N4006	DIODE	
D38	1N4006	DIODE	
D39	1N4006	DIODE	
D40	1N4006	DIODE	
D41	1N4006	DIODE	
D42	1N4006	DIODE	
J1	S2968-66 DD78M4R7N2C1235.3	CONNECTOR REF CONNECTOR FOR J1	
K1	M6106/27-003	RELAY	
K2	M6106/27-003	RELAY	
K3	M6106/27-003	RELAY	
K4	M6106/27-003	RELAY	
VR1	MC78T15CK	VOLT REG.	
VR2	MC78T15CK	VOLT REG.	



NOSE J-BOX
E CARD
LIGHTING DIM/TEST

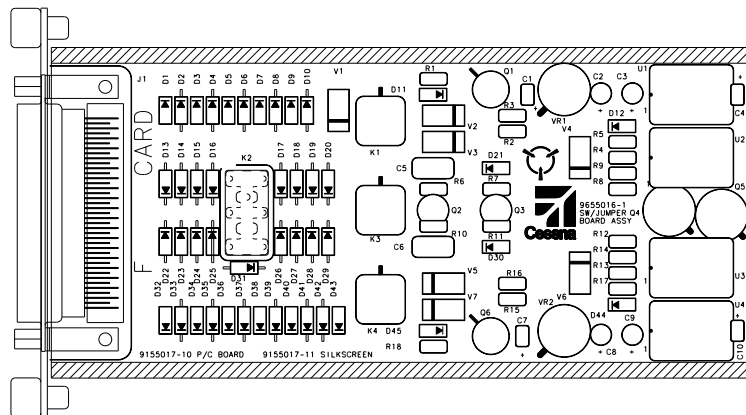
DATE	05/30/03	CESNA AIRCRAFT COMPANY AIRCRAFT DIVISION P.O. BOX 7704 WICHITA, KANSAS 67277
DRAWN	K. BURTON	AVIONICS SYSTEM REFERENCE INFORMATION
GROUP		
CHECK		
SECT		
PROJ		
M.E.		SIZE FSCM NO. F71379 DWG NO. 8600202 FABRICATE PER CS2260 PROCESS PER XXXXXXX WIRE TERMINATION PER CS2216
OTHER		SCALE: SCL
SHEET 6 OF 12		CES FORM 1872

8600202

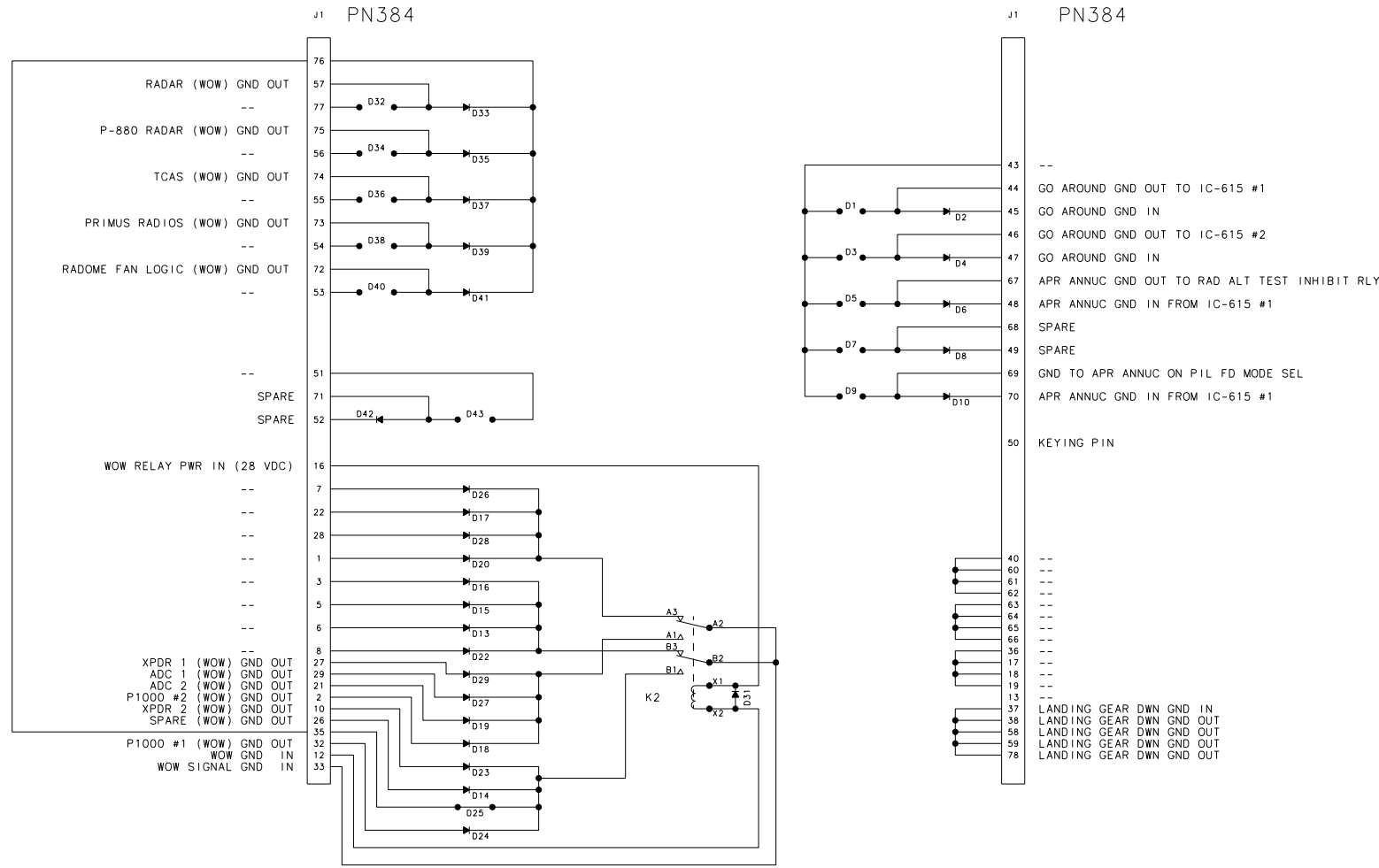
REF DES	PART NUMBER	DESCRIPTION	NOTE
C1	NOT INSTALLED	CAPACITOR .1 μ F	
C2	NOT INSTALLED	CAPACITOR .33 μ F 50V	
C3	NOT INSTALLED	CAPACITOR .33 μ F 50V	
C4	NOT INSTALLED	CAPACITOR .1 μ F	
C5	NOT INSTALLED	CAPACITOR .10 μ F	
C6	NOT INSTALLED	CAPACITOR .10 μ F	
C7	NOT INSTALLED	CAPACITOR .1 μ F	
C8	NOT INSTALLED	CAPACITOR .33 μ F 50V	
C9	NOT INSTALLED	CAPACITOR .33 μ F 50V	
C10	NOT INSTALLED	CAPACITOR .1 μ F	
D1	NOT INSTALLED	DIODE	
D2	1N4006	DIODE	
D3	NOT INSTALLED	DIODE	
D4	1N4006	DIODE	
D5	NOT INSTALLED	DIODE	
D6	1N4006	DIODE	
D7	NOT INSTALLED	DIODE	
D8	1N4006	DIODE	
D9	NOT INSTALLED	DIODE	
D10	1N4006	DIODE	
D11	NOT INSTALLED	DIODE	
D12	NOT INSTALLED	DIODE	
D13	1N4006	DIODE	
D14	1N4006	DIODE	
D15	1N4006	DIODE	
D16	1N4006	DIODE	

REF DES	PART NUMBER	DESCRIPTION	NOTE
D17	1N4006	DIODE	
D18	1N4006	DIODE	
D19	1N4006	DIODE	
D20	1N4006	DIODE	
D21	NOT INSTALLED	DIODE	
D22	1N4006	DIODE	
D23	1N4006	DIODE	
D24	1N4006	DIODE	
D25	NOT INSTALLED	DIODE	
D26	1N4006	DIODE	
D27	1N4006	DIODE	
D28	1N4006	DIODE	
D29	1N4006	DIODE	
D30	NOT INSTALLED	DIODE	
D31	1N4006	DIODE	
D32	NOT INSTALLED	DIODE	
D33	1N4006	DIODE	
D34	NOT INSTALLED	DIODE	
D35	1N4006	DIODE	
D36	NOT INSTALLED	DIODE	
D37	1N4006	DIODE	
D38	NOT INSTALLED	DIODE	
D39	1N4006	DIODE	
D40	NOT INSTALLED	DIODE	
D41	1N4006	DIODE	

REF DES	PART NUMBER	DESCRIPTION	NOTE
D42	1N4006	DIODE	
D43	NOT INSTALLED	DIODE	
D44	NOT INSTALLED	DIODE	
D45	NOT INSTALLED	DIODE	
J1	S2968-50 0078M4R7N12C1235.1	CONNECTOR REF CONNECTOR FOR J1	
K1	NOT INSTALLED	RELAY	
K2	M6106/27-003	RELAY	
K3	NOT INSTALLED	RELAY	
K4	NOT INSTALLED	RELAY	
Q1	NOT INSTALLED	TRANSISTOR, PNP	
Q2	NOT INSTALLED	TRANSISTOR FET	
Q3	NOT INSTALLED	TRANSISTOR FET	
Q4	NOT INSTALLED	TRANSISTOR FET	
Q5	NOT INSTALLED	TRANSISTOR FET	
Q6	NOT INSTALLED	TRANSISTOR, PNP	
R1	NOT INSTALLED	RESISTOR, 1/4W 100 Ω	
R2	NOT INSTALLED	RESISTOR, 1/4W 10 K Ω	
R3	NOT INSTALLED	RESISTOR, 1/4W 100 K Ω	
R4	NOT INSTALLED	RESISTOR, 1/4W 10 K Ω	
R5	NOT INSTALLED	RESISTOR, 1/4W 10 K Ω	
R6	NOT INSTALLED	RESISTOR, 1/4W 10 K Ω	
R7	NOT INSTALLED	RESISTOR, 1/4W 215 K Ω	
R8	NOT INSTALLED	RESISTOR, 1/4W 1 K Ω	
R9	NOT INSTALLED	RESISTOR, 1/4W 100 K Ω	
R10	NOT INSTALLED	RESISTOR, 1/4W 215 K Ω	
R11	NOT INSTALLED	RESISTOR, 1/4W 215 K Ω	
R12	NOT INSTALLED	RESISTOR, 1/4W 1 K Ω	
R13	NOT INSTALLED	RESISTOR, 1/4W 10 K Ω	
R14	NOT INSTALLED	RESISTOR, 1/4W 100 K Ω	
R15	NOT INSTALLED	RESISTOR, 1/4W 10 K Ω	
R16	NOT INSTALLED	RESISTOR, 1/4W 100 K Ω	
R17	NOT INSTALLED	RESISTOR, 1/4W 10 K Ω	
R18	NOT INSTALLED	RESISTOR, 1/4W 100 Ω	
U1	NOT INSTALLED	QUAD 2 INPUT SCHMITT TRIG	
U2	NOT INSTALLED	DUAL D FLIP/FLOP	
U3	NOT INSTALLED	DUAL D FLIP/FLOP	
U4	NOT INSTALLED	QUAD 2 INPUT SCHMITT TRIG	
V1	NOT INSTALLED	TRANSORB	
V2	NOT INSTALLED	TRANSORB	
V3	NOT INSTALLED	TRANSORB	
V4	NOT INSTALLED	TRANSORB	
V5	NOT INSTALLED	TRANSORB	
V6	NOT INSTALLED	TRANSORB	
V7	NOT INSTALLED	TRANSORB	
VR1	NOT INSTALLED	VOLTAGE REGULATOR, 15V	
VR2	NOT INSTALLED	VOLTAGE REGULATOR, 15V	



DATE	05/03/03	CESNA AIRCRAFT COMPANY
DRAWN	K. BURTON	AIRCRAFT DIVISION
GROUP		P. O. BOX 7704
CHECK		WICHITA, KANSAS 67277
SECT		AVIONICS SYSTEM REFERENCE INFORMATION
PROJ.		
M.E.		
OTHER		
FABRICATE PER DES2606	SIZE (FSW NO.)	DWG NO.
PROCESS PER XXXXXXXXXXXXX	F71379	8600202
THE TERMINATION PER DES2236	SCALE: SCL	SHEET 7 OF 12



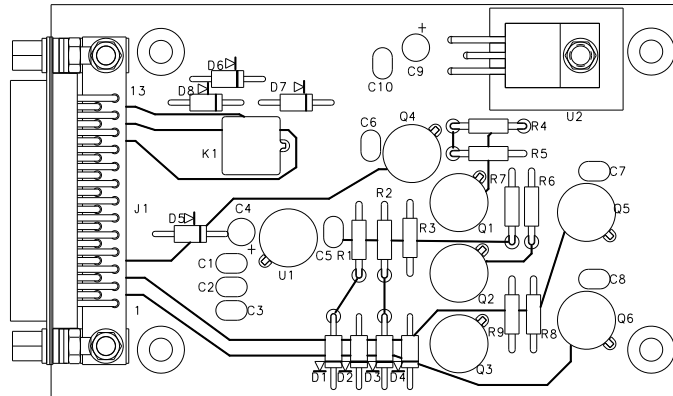
NOSE J-BOX
F-BOARD SCHEMATIC

CIRCUIT IS NOT USED & COMPONENTS ARE NOT INSTALLED

DATE	05/30/03	CESSNA AIRCRAFT COMPANY
DRAWN	K. BURTON	AIRCRAFT DIVISION
GROUP		P. O. BOX 7704
CHECK		WICHITA, KANSAS 67277
SECT		AVIONICS SYSTEM REFERENCE INFORMATION
PROJ		
M.E.		
OTHER		
FABRICATE PER	CESS2608	SIZE FSCM NO.
PROCESS PER	XXXXXXX	F71379
WIRE TERMINATION PER	CESS2716	DWG NO.
		8600202
		SCALE: SCL
		SHEET 8 OF 12

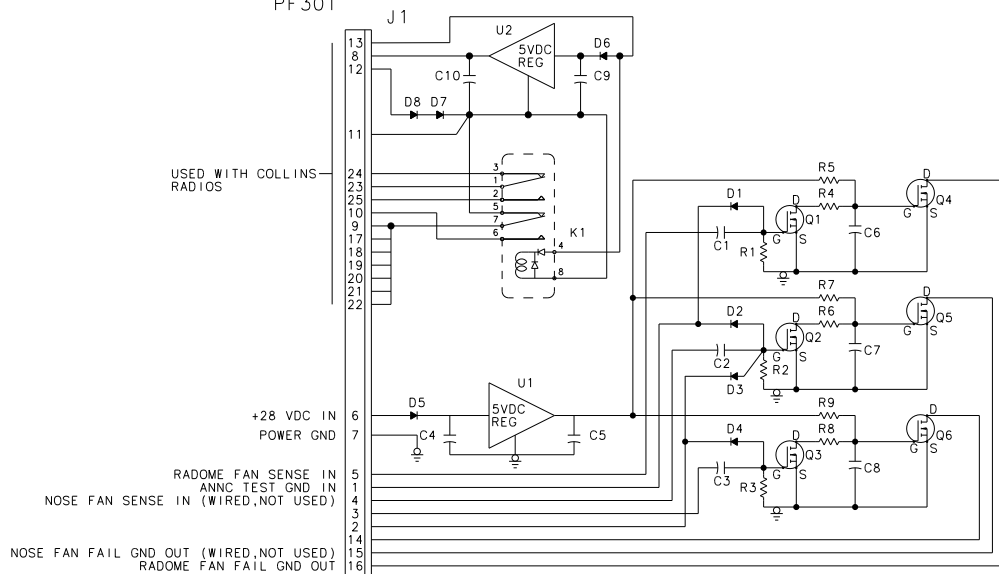
8600202

9614007-2 LOGIC BOARD



DES.	PART NUMBER	DESCRIPTION	NOTES
C1	CY20C104M	CAPACITOR .1μFD	
C2	CY20C104M	CAPACITOR .1μFD	
C3	CY20C104M	CAPACITOR .1μFD	
C4	TDC334M050NLE	CAPACITOR .33μFD	
C5	CY20C104M	CAPACITOR .1μFD	
C6	CY20C154M	CAPACITOR .15μFD	
C7	CY20C154M	CAPACITOR .15μFD	
C8	CY20C154M	CAPACITOR .15μFD	
C9	TDC334M050NLE	CAPACITOR .33μFD	
C10	CY20C104M	CAPACITOR .1μFD	
D1	1N4006	DIODE	
D2	1N4006	DIODE	
D3	1N4006	DIODE	
D4	1N4006	DIODE	
D5	1N4006	DIODE	
D6	1N4006	DIODE	
D7	1N4006	DIODE	
D8	1N4006	DIODE	
J1	M24308/23-51	CONNECTOR	
K1	J114DD-26WL	RELAY	
Q1	VN67AB	MOS-FET TRANSISTOR	
Q2	VN67AB	MOS-FET TRANSISTOR	
Q3	VN67AB	MOS-FET TRANSISTOR	
Q4	VN67AB	MOS-FET TRANSISTOR	
Q5	VN67AB	MOS-FET TRANSISTOR	
Q6	VN67AB	MOS-FET TRANSISTOR	
R1	CM3908-103G	RESISTOR 10KΩ	
R2	CM3908-103G	RESISTOR 10KΩ	
R3	CM3908-103G	RESISTOR 10KΩ	
R4	CM3908-101G	RESISTOR 100Ω	
R5	CM3908-334G	RESISTOR 330KΩ	
R6	CM3908-101G	RESISTOR 100Ω	
R7	CM3908-334G	RESISTOR 330KΩ	
R8	CM3908-101G	RESISTOR 100Ω	
R9	CM3908-334G	RESISTOR 330KΩ	
U1	μA78M05HM	REGULATOR 5 VOLT	
U2	μA7805CKC	REGULATOR 5 VOLT	

PF 301

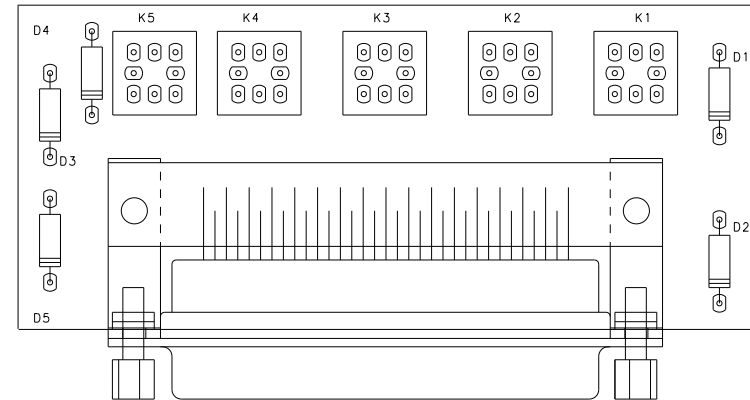
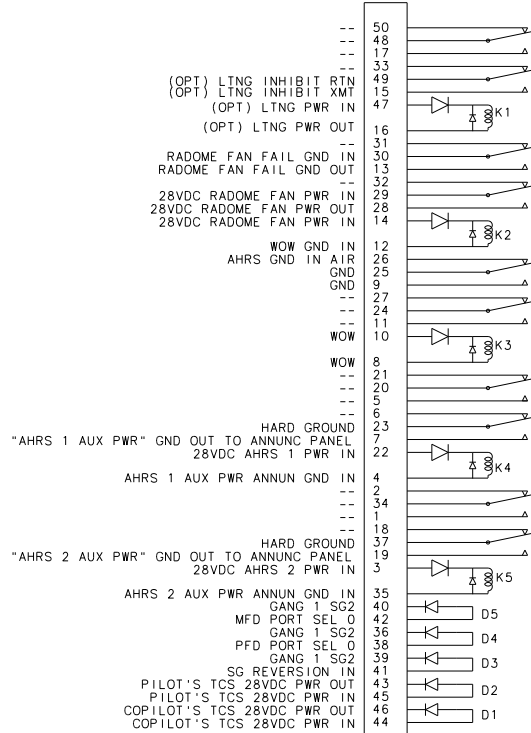


8655004-4 CABIN AVIONICS LOGIC BOX
9614007-2 FAN SENSE LOGIC BOARD ASSY
AND SCHEMATIC

DATE	05/30/03	CESSNA AIRCRAFT COMPANY AIRCRAFT DIVISION P. O. BOX 7704 WICHITA, KANSAS 67277
DRAWN	K. BURTON	
GROUP		AVIONICS SYSTEM REFERENCE INFORMATION
CHECK		
SECT		
PROJ		
M.E.		
OTHER		SIZE FSCM NO. 1 DRG NO. F71379 8600202 FABRICATE PER CES2208 PROCESS PER 3000XXXXXX WIRE TERMINATION PER CES2216
SCALE SCL		SHEET 9 OF 12

REF DES	PART NUMBER	NOMENCLATURE	NOTES
D1	1N4006	DIODE	
D2	1N4006	DIODE	
D3	1N4006	DIODE	
D4	1N4006	DIODE	
D5	1N4006	DIODE	
K1	114DD26A	RELAY	1 AMP
K2	114DD26A	RELAY	1 AMP
K3	114DD26A	RELAY	1 AMP
K4	114DD26A	RELAY	1 AMP
K5	114DD26A	RELAY	1 AMP
J1	205869-2	PLUG	7 AMPS

PF427

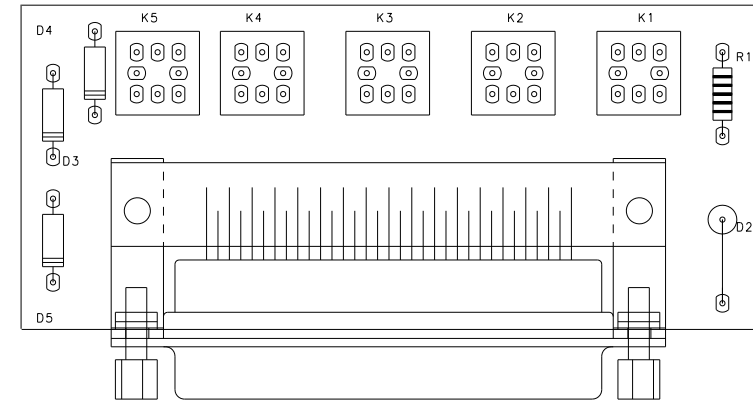
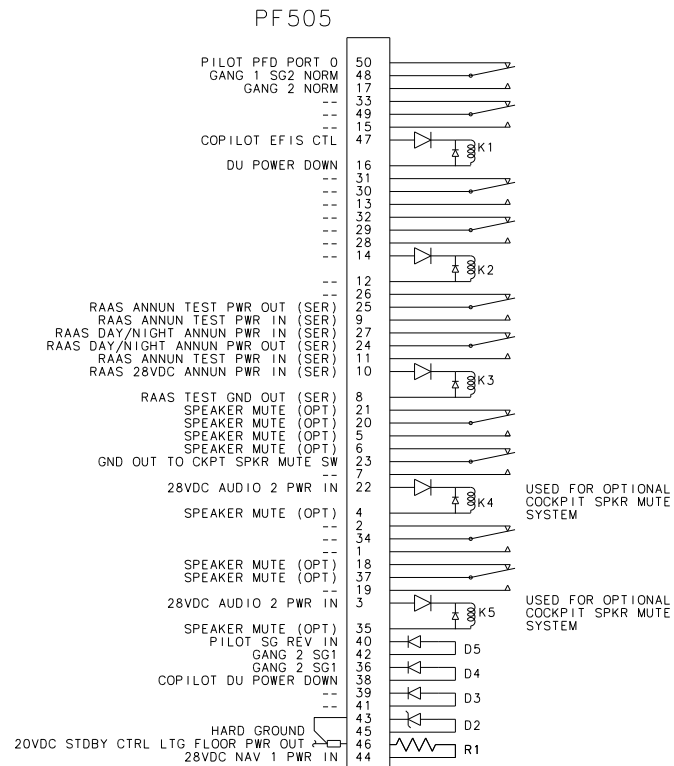


8655001-1 BOARD ASSY

8655004-4 CABIN AVIONICS LOGIC BOX
8655001-1 EFIS INTERFACE BOARD ASSY AND SCHEMATIC

DATE 05/30/03		CESSNA AIRCRAFT COMPANY	
DRAWN K. BURTON		AIRCRAFT DIVISION	
GROUP		P. O. BOX 7704	
CHECK		WICHITA, KANSAS 67277	
SECT		 AVIONICS SYSTEM REFERENCE INFORMATION	
PROJ			
M.E.			
OTHER			
SCALE SCL			
FABRICATE PER CES2208		SIZE FSCW NO.	DWG NO.
PROCESS PER 3345XXXXXX		F71379	8600202
WIRE TERMINATION PER 3522716		SCALE SCL	SHEET 10 OF 12

REF DES	PART NUMBER	NOMENCLATURE	NOTES
R1	RCR07G102JP	RESISTOR	1K 0.25 WATT
D2	1N5357B	ZENNER DIODE	20V 5 WATT
D3	1N4006	DIODE	
D4	1N4006	DIODE	
D5	1N4006	DIODE	
K1	114DD26A	RELAY	1 AMP
K2	114DD26A	RELAY	1 AMP
K3	114DD26A	RELAY	1 AMP
K4	114DD26A	RELAY	1 AMP
K5	114DD26A	RELAY	1 AMP
J1	205869-2	PLUG	7 AMPS



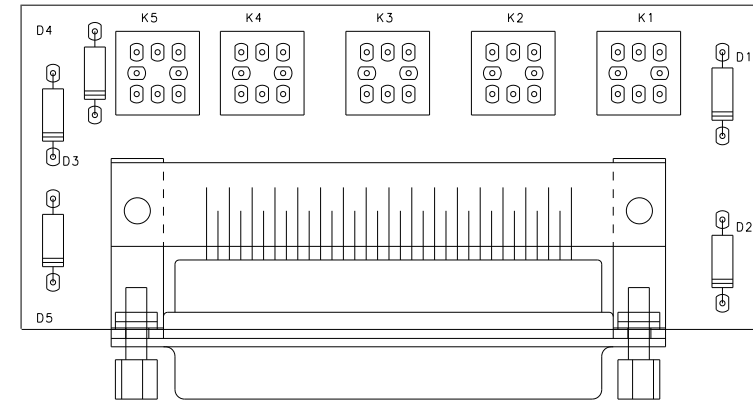
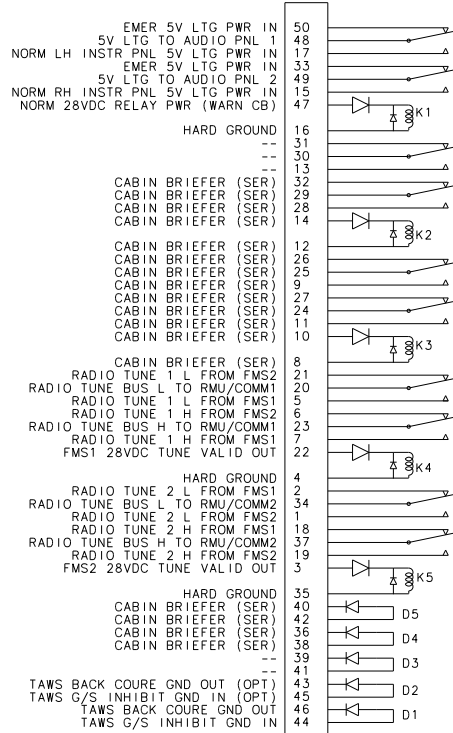
8655005-1 BOARD ASSY

8655004-4 CABIN AVIONICS LOGIC BOX
8655005-1 STDBY CTRL HEAD LTG BOARD AND SCHEMATIC

DATE	05/30/03	CESSNA AIRCRAFT COMPANY AIRCRAFT DIVISION P. O. BOX 7704 WICHITA, KANSAS 67277
DRAWN	K. BURTON	
GROUP		AVIONICS SYSTEM REFERENCE INFORMATION
CHECK		
SECT		
PROJ		
M.E.		
OTHER		SIZE FSCM NO. F71379 DRG NO. 8600202 FABRICATE PER CESS2008 PROCESS PER 3455XXXXXX WIRE TERMINATION PER 3552716
SCALE SCL		SHEET 11 OF 12

REF DES	PART NUMBER	NOMENCLATURE	NOTES
D1	1N4006	DIODE	
D2	1N4006	DIODE	
D3	1N4006	DIODE	
D4	1N4006	DIODE	
D5	1N4006	DIODE	
K1	114DD26A	RELAY	1 AMP
K2	114DD26A	RELAY	1 AMP
K3	114DD26A	RELAY	1 AMP
K4	114DD26A	RELAY	1 AMP
K5	114DD26A	RELAY	1 AMP
J1	205869-2	PLUG	7 AMPS

PF701



8655001-1 BOARD ASSY

8655004-4 CABIN AVIONICS LOGIC BOX
 8655001-1 FMS INTERFACE BOARD ASSY AND SCHEMATIC

DATE	05/30/03	CESSNA AIRCRAFT COMPANY
DRAWN	K. BURTON	AIRCRAFT DIVISION
CHECK		P. O. BOX 7704
SECT		WICHITA, KANSAS 67277
PROJ		AVIONICS SYSTEM REFERENCE INFORMATION
M.E.		
OTHER		
FABRICATE PER	CESS2606	SIZE FSCM NO.
PROCESS PER	CESS2606	DRG NO.
WIRE TERMINATION PER	CESS2716	F71379 8600202
		SCALE SCL