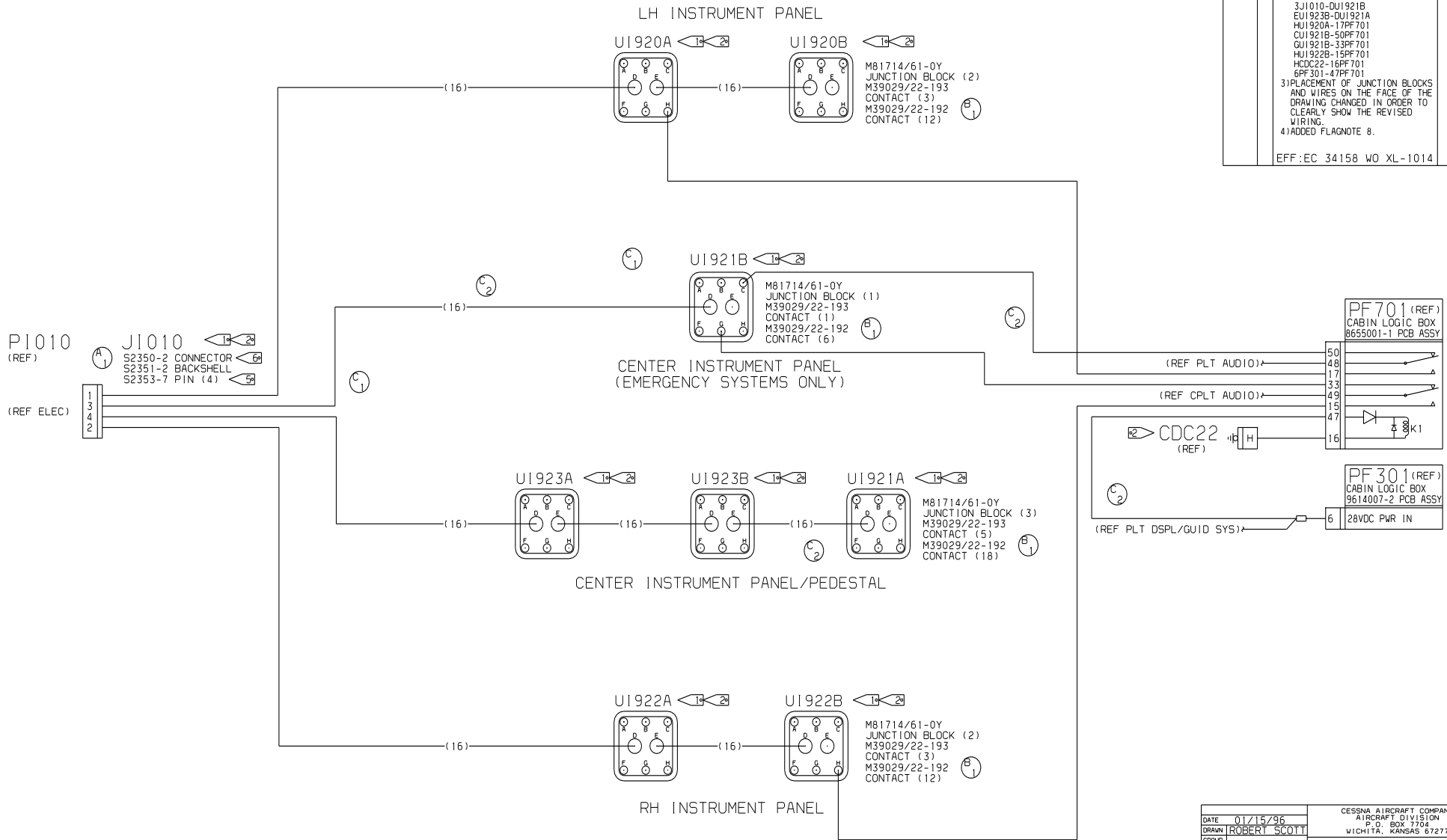


NOTES:

- 1. AFFIX CM2987-1 ID TAG NEAR CONNECTOR.
- 2. REFER TO 8654500 FOR LIGHTING/GROUND BLOCK LOCATION.
- 3. ALL SINGLE CONDUCTOR WIRE SHALL BE PER M81044/12-XX-9.
- 4. AMP INC., HARRISBURG, PA.
- 5. S2353-7 IS CESSNA STANDARD PART NUMBER FOR 66099-1 PIN.
- 6. S2350-2 IS CESSNA STANDARD PART NUMBER FOR 206061-1 CONNECTOR.
- 7. S2351-2 IS CESSNA STANDARD PART NUMBER FOR 206062-1 CONNECTOR.
- 8. MISC. HARDWARE: M81824/1-1 SPLICE

REVISIONS			
SHEET	REV	DESCRIPTION	DATE APPROVED
	A	REVISED WITH CHANGES: 1) PART # WAS 2-203735-6, ADDED S2351-2 BACKSHELL 2) ADDED FLAGNOTES 6 & 7 EFF: EC 34158 WO XL-0150	04/05/96 RBS
	B	REVISED WITH CHANGES: 1) CHANGED PART NUMBER FROM M39029/22-191 TO M39029/22-192. EFF: EC 34158 WO XL-0530	07/31/96 SAS
	C	BY REVISION: 1) DELETED THE FOLLOWING WIRES: 3J1010-OUI921A EUI921A-OUI921B 2) ADDED THE FOLLOWING WIRES: 3J1010-OUI921B EUI923B-OUI921A HUI920A-17PF701 CUI921B-50PF701 GUI921B-33PF701 HUI922B-15PF701 HDC22-15PF701 6PF301-47PF701 3) PLACEMENT OF JUNCTION BLOCKS AND WIRES ON THE FACE OF THE DRAWING CHANGED IN ORDER TO CLEARLY SHOW THE REVISED WIRING. 4) ADDED FLAGNOTE 8. EFF: EC 34158 WO XL-1014	01/20/97 RBS



DATE	01/15/96	CESSNA AIRCRAFT COMPANY	
DRAWN	ROBERT SCOTT	AIRCRAFT DIVISION	
GROUP		P.O. BOX 7704	
CHECK		WICHITA, KANSAS 67277	
SECT			
PRD J			
M. E.			
OTHER			
FABRICATE PER CES2604		SIZE	FSO N D.
PROCESS PER XXXXXXXXXXXXX		DWG NO.	
WIRE TERMINATION PER CES2718		F 71379	
SCALE: SCL		SHEET 1 OF 1	