

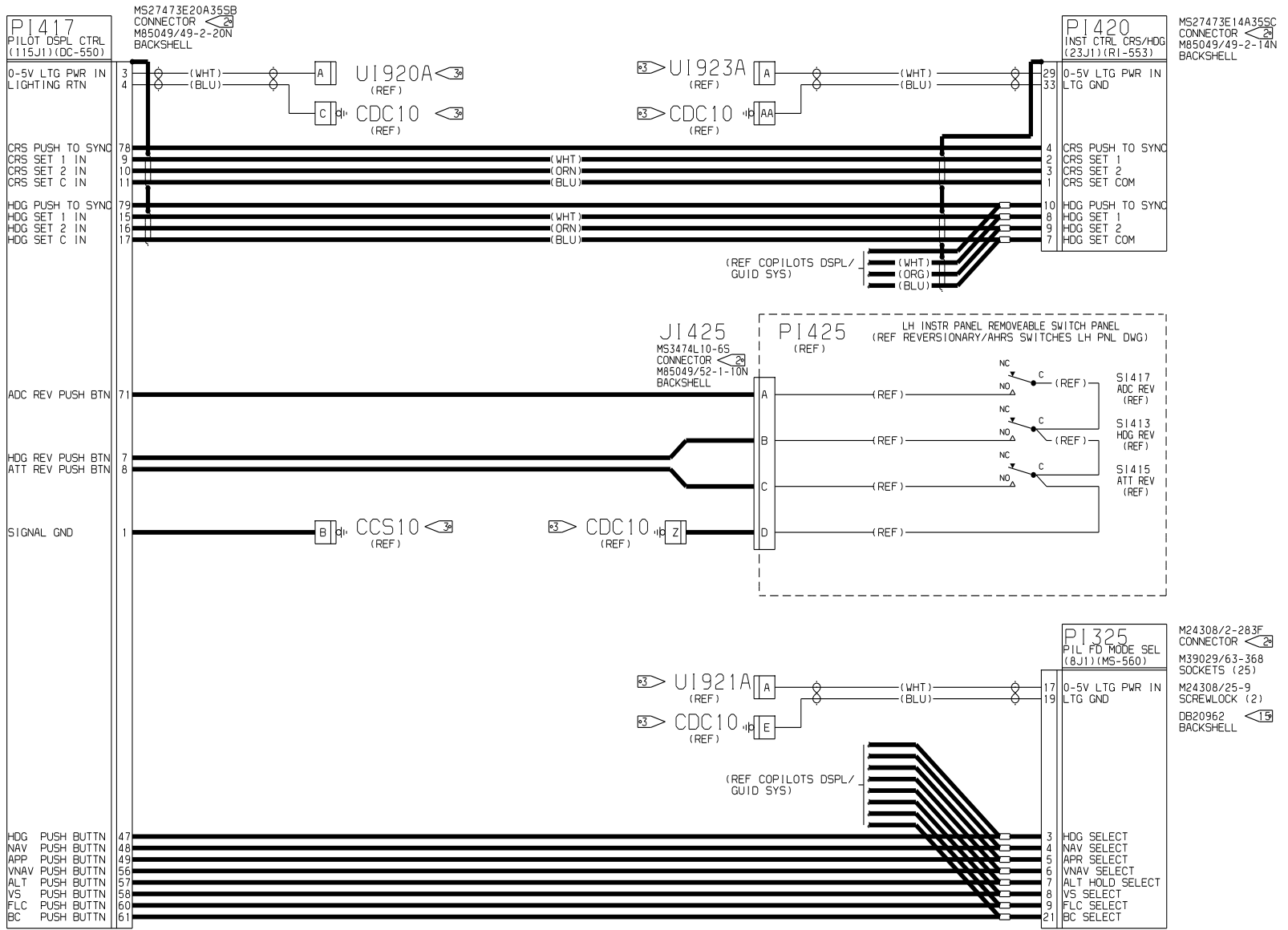
NOTES:

| REVISIONS |     |             |      |          |
|-----------|-----|-------------|------|----------|
| SHEET     | REV | DESCRIPTION | DATE | APPROVED |

- THIS DRAWING FILED IN CCD.
- AFFIX CM2987-5 ID TAG NEAR PLUG.
- REFER TO 8654500 FOR LIGHTING AND GROUND BLOCK/STUD LOCATIONS.
- FOR 20 AWG WIRE, USE TRISTAR PIN P/N 219-2220-079 (REF) WITH EXTRACTION TOOL: M81969/14-01 (REF).
- AEROSPACE OPTICS INC., FT. WORTH, TEXAS, CI 32245.
- AMP INC., HARRISBURG, PA., CI 00779.
- ALL WIRE PER MIL-W-81044/12, 22 AWG, EXCEPT AS NOTED.
- THE POLARIZING POSTS ARE INCLUDED WITH THE CONNECTOR AS LOOSE EQUIPMENT. THEY ARE TO BE INSTALLED IN THE CONNECTOR DURING ASSEMBLY. THE POLARIZATION POSITION IS TO BE THE SAME AS THE MATING CONNECTOR ON THE ASSOCIATED VENDOR BOX.

- POSITRONIC IND INC., SPRINGFIELD, MO. CI 28198
  - MASON ELECTRIC CO INC., GLENDALE, CA.
  - OME ELECTRONICS, WICHITA, KS.
- SINGLE CONDUCTOR SHIELDED WIRE PER M27500-\*\*ML1T08. TWO CONDUCTOR SHIELDED WIRE PER M27500-\*\*ML2T08. THREE CONDUCTOR SHIELDED WIRE PER M27500-\*\*ML3T08. TWISTED PAIR PER M27500-XXML2U00 (\*\* AWG 22 EXCEPT AS NOTED)
- MISC HARDWARE:
  - M81824/1-1 SPLICE M7928/1-14 TERMINAL
  - M81824/1-2 SPLICE S2974N2 SOLDER SLEEVE
  - M81824/1-3 SPLICE S2974N3 SOLDER SLEEVE
  - M525036-102 TERMINAL S2974-7 SHIELD TERMINATION
  - M525036-103 TERMINAL S2974-8 SHIELD TERMINATION
  - M525036-149 TERMINAL
- SUNBANK ELECTRONICS INC., PASO ROBLES, CA.
- ITT CANNON, SANTA ANA, CALIF.

- POLARIZE CONNECTOR BY INSERTING POLARIZING PLUG P/N 206509-1.
- TRI-STAR ELECTRONICS INC., VENICE, CALIF.
- LINES SHOWN AS BOLD SHALL MEET THE HIRF GUIDELINES AS SPELLED OUT ON THE AVIONICS CABLE KIT, AND MANUFACTURED IN ACCORDANCE WITH CESSNA SPECIFICATION CSAM012.
- DEUTCH CONNECTOR, HEMET, CA.
- AN ASTERISK PRECEDING A LETTER INDICATES LOWER CASE.
- THE CONFIGURATION MODULE IS MOUNTED ON THE BACK OF THE IC-615 TRAY. REFER TO 8685XXX (5XXX IS THE AIRCRAFT SERIAL) FOR THE INSTALLATION AND PART NUMBER OF THE CONFIGURATION MODULE.
- WIRES TO BE 6" MAXIMUM.
- VENDOR SUPPLIED WIRES.

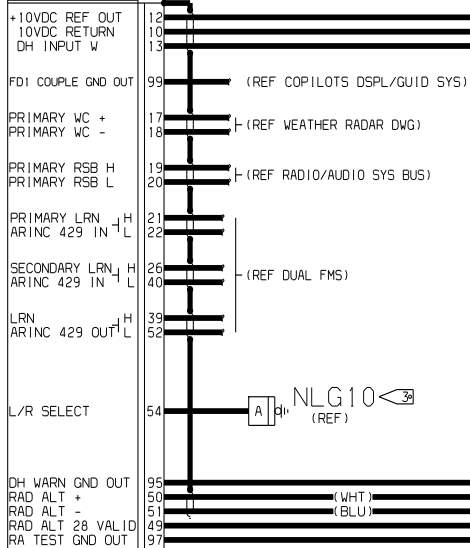


|                                 |                |   |
|---------------------------------|----------------|---|
| DATE                            | 4/2/2001       | CESSNA AIRCRAFT COMPANY   |
| DRAWN                           | GARY SCHWEIZER | AIRCRAFT DIVISION   |
| GROUP                           |                | P. O. BOX 3704  |
| CHECK                           |                | WICHITA, KANSAS 67277   |
| SECT                            |                |   |
| PROJ                            |                |   |
| M.E.                            |                |   |
| OTHER                           |                |   |
| FABRICATE PER CES2200           |                | C/A-PRIMUS 1000<br>PILOTS DISPLAY &<br>GUIDANCE SYSTEM (IC-615) |
| PROCESS PER XXXXXXXXXX          |                |   |
| WIRE TERMINATION PER CES2710    |                | SIZE: FSN NO.      DWG NO.                                      |
| SCALE: SCL      PARENT: 8612124 |                | <b>F 71379</b>  |
| SHEET 1 OF 6                    |                | CES FORM 1872   |

EC-565156

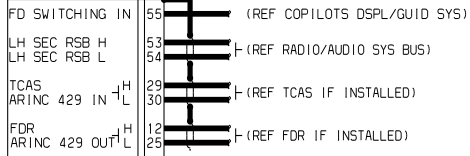
**PN367**  
DSPL/GUID CMPTR  
(190J2A) (IC-615)

M81659/69A2-0043 CONN  
J1560-12-1C BACKSHELL  
219-2220-079 PIN (6)  
NAS1922-0125-3 CLAMP



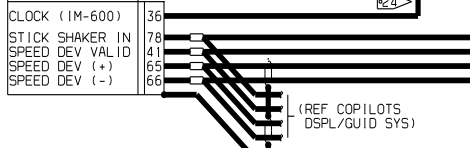
**PN369**  
DSPL/GUID CMPTR  
(190J2B) (IC-615)

J1560-12-1C BACKSHELL  
219-2220-079 PIN (18)  
NAS1922-0125-3 CLAMP



**PN365**  
DSPL/GUID CMPTR  
(190J1B) (IC-615)

M81659/69A2-0043 CONN  
J1560-12-1C BACKSHELL  
219-2220-079 PIN (6)  
NAS1922-0125-3 CLAMP



**PN305**  
MS27473E20F35P  
CONNECTOR  
M85049/49-2-20N  
BACKSHELL

**JN305**  
MS27474E20F35S  
CONNECTOR  
M85049/49-2-20N  
BACKSHELL

**PN383**  
AVIONICS NOSE  
J-BOX  
POLARIZING

**PN385**  
AVIONICS NOSE  
J-BOX  
POLARIZING

**UN301** (REF)  
CONF IG MODULE  
(1M-600)

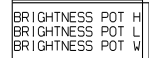
**PN301** (REF)  
RES4-106S  
CONN.



**PB325** (REF)

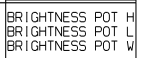
**JB325** (REF)

**P1417** (REF)  
PIL DSPL CTRL  
(115J1) (DC-550)

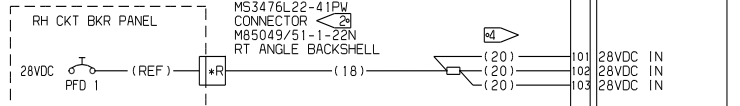


M81659/29A2-0041 CONN  
J1560-12-1C BACKSHELL  
219-2220-079 PIN (6)  
NAS1922-0125-3 CLAMP

**P1423**  
PILOTS DISPLAY  
(130J1) (OU-870)



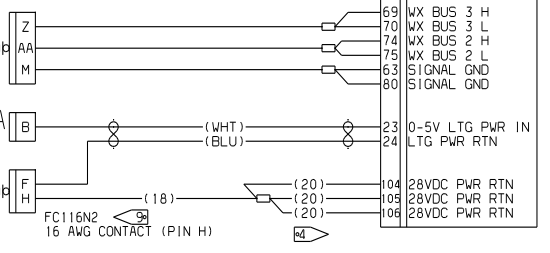
**PF908**



**CCS10** (REF)

**U1920A** (REF)

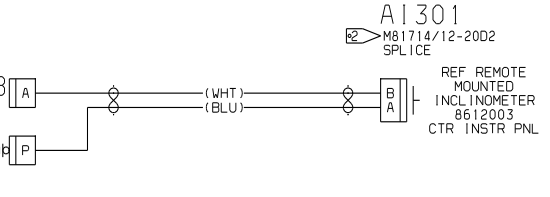
**CDC10** (REF)



**A1301**  
M81714/12-2002  
SPLICE

**U1921B** (REF)

**CDC10** (REF)



**PC004**

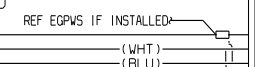
MS27473E20F39P  
CONNECTOR  
M85049/57G20N  
BACKSHELL

**PB326** (REF)

**JB326** (REF)

**PB325** (REF)

**JB325** (REF)



AWW/ELEC DISC

|                              |                 |                          |
|------------------------------|-----------------|--------------------------|
| DATE                         | 4/2/2001        | CESSNA AIRCRAFT COMPANY  |
| DRAWN                        | GARY SCHWEITZER | AIRCRAFT DIVISION        |
| CHECK                        |                 | P.O. BOX 7704            |
| SECT                         |                 | WICHITA, KANSAS 67277    |
| PROJ                         |                 | C/A-PRIMUS 1000          |
| M. E.                        |                 | PILOTS DISPLAY &         |
| OTHER                        |                 | GUIDANCE SYSTEM (IC-615) |
| FABRICATE PER CESSNA         | SIZE PFSM NO.   | DWG NO.                  |
| PROCESS PER XXXXXXXXXXXX     | <b>F 71379</b>  |                          |
| WIRE TERMINATION PER DES2716 | SCALE: SCL      | SHEET 2 OF 6             |

PN367 (REF)  
DSPL/GUID CMPTR  
(190J2A)(IC-615)

PN311 (REF)  
AHRS 1 (J4)  
LCR-93 LITEF

PRI ATT/HDG IN  
ARINC 429 IN

H\_NO 1 ATT/HDG OUT  
ARINC 429 (100K2)

PRI ATT/HDG IN  
ARINC 429 IN

PN305 (REF)  
JN305 (REF)

PN312 (REF)  
AHRS 2 (J4)  
LCR-93 LITEF

SEC ATT/HDG IN  
ARINC 429 IN

H\_NO 2 ATT/HDG OUT  
ARINC 429 (100K2)

IC600 VALID

BANK ANN OUT

PN369 (REF)  
DSPL/GUID CMPTR  
(190J2B)(IC-615)

+15VDC REF OUT  
-15VDC REF OUT  
AP ENG SEL IN  
YD SEL ENG IN  
AP ENG ANN OUT  
YD ENG ANN OUT  
TRIM UP ANN OUT  
TRIM DN ANN OUT  
PITCH WHEEL IN+  
PITCH WHEEL IN-  
BANK IN  
TURN KNOB INPUT

TURN KNOB OD  
SERVO +28VDC  
SERVO +28VDC  
SERVO +28VDC  
SERVO +28VDC

PN367 (REF)  
DSPL/GUID CMPTR  
(190J2A)(IC-615)

DGC SIGNAL GND  
DGC SIGNAL GND  
DGC DC PWR GND  
DGC DC PWR GND  
DGC DC PWR GND  
DGC DC PWR GND

CPU LAMP RTN

+28VDC IN  
+28VDC IN  
+28VDC IN

ICB +  
ICB -  
RS-232 TX  
RS-232 RX  
RS-232 GND

DC/SG BUS H  
DC/SG BUS L

PN900 (REF)  
AVIONICS NOSE  
J-BOX  
ANN BRT/DIM PWR

(NOSE)  
PB326 (REF)

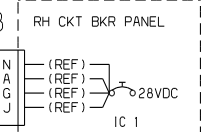
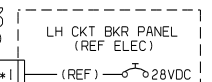
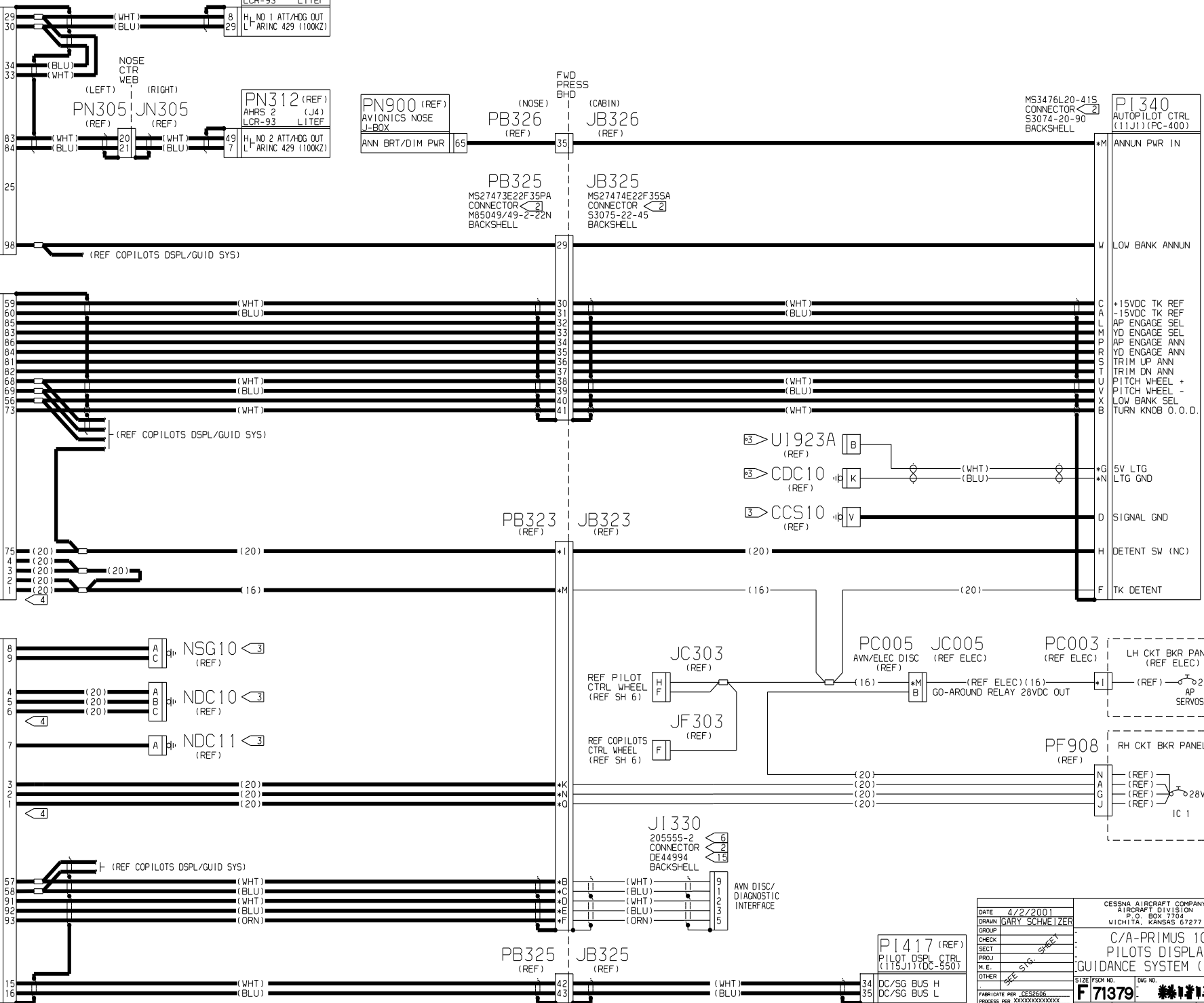
(CABIN)  
JB326 (REF)

PB325  
MS27473E22F 35PA  
CONNECTOR  
M85049/49-2-22N  
BACKSHELL

JB325  
MS27474E22F 35SA  
CONNECTOR  
S3075-22-45  
BACKSHELL

MS3476L20-41S  
CONNECTOR  
S3074-20-90  
BACKSHELL

PI340  
AUTOPILOT CTRL  
(11J1)(IC-400)

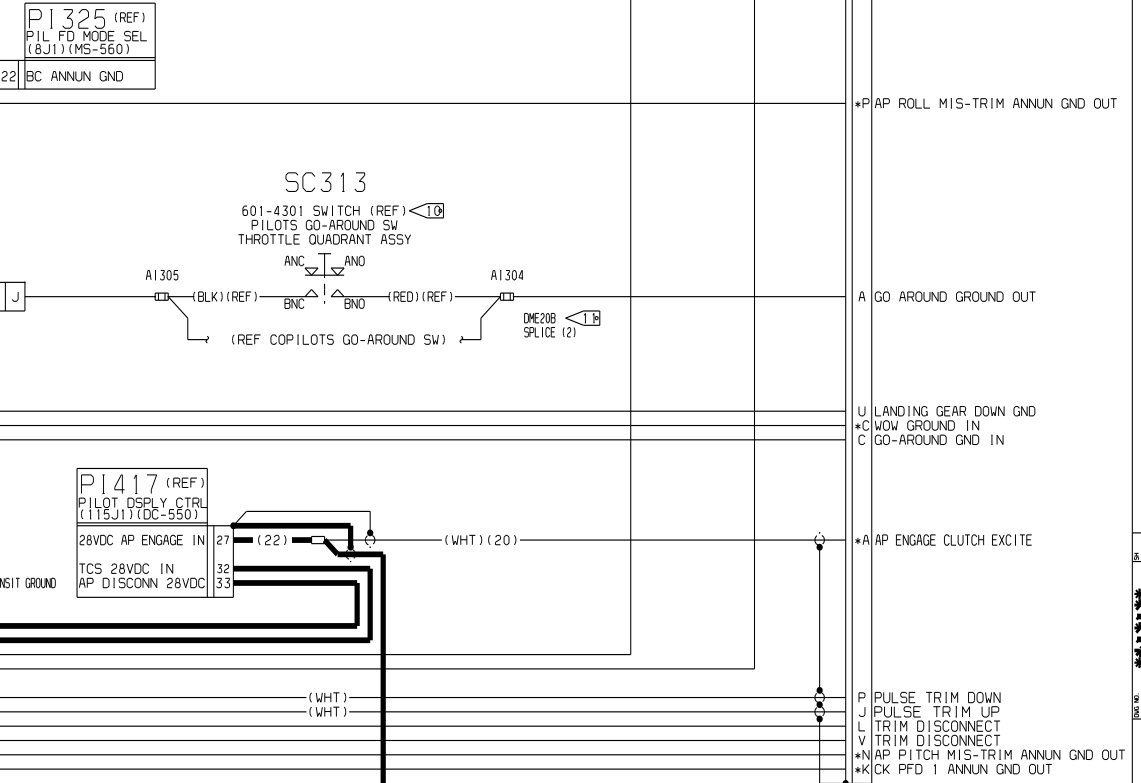
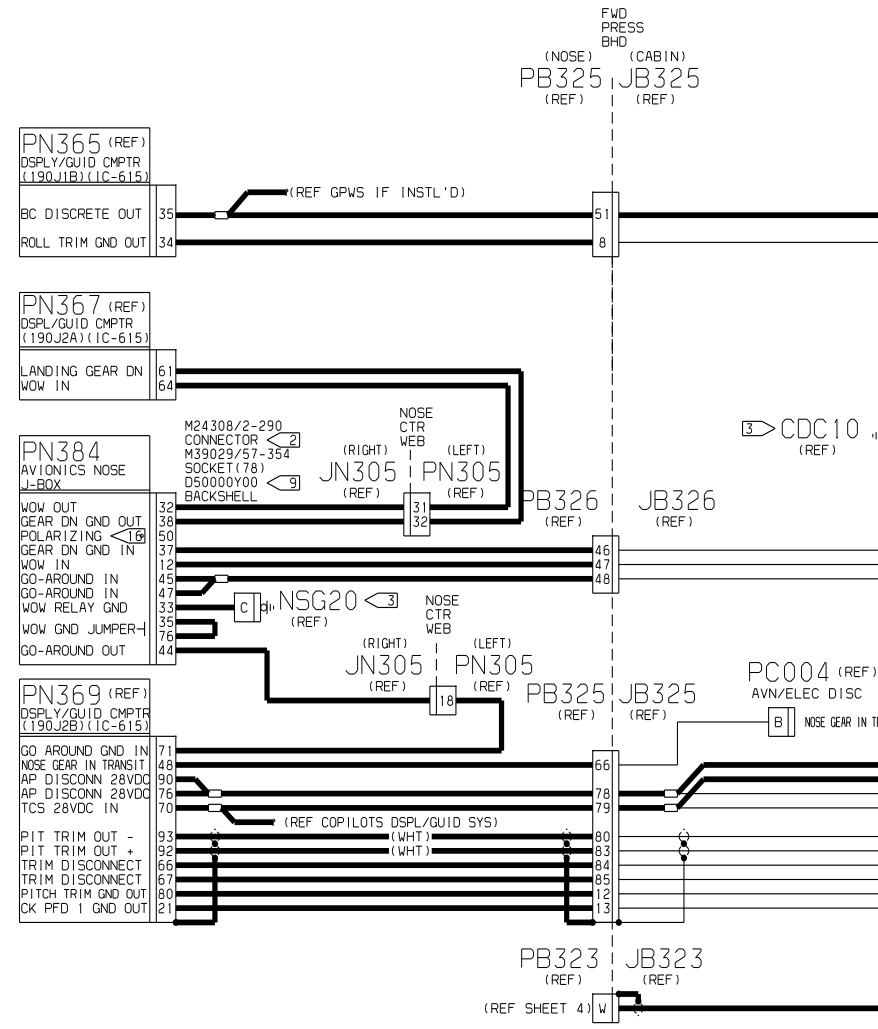
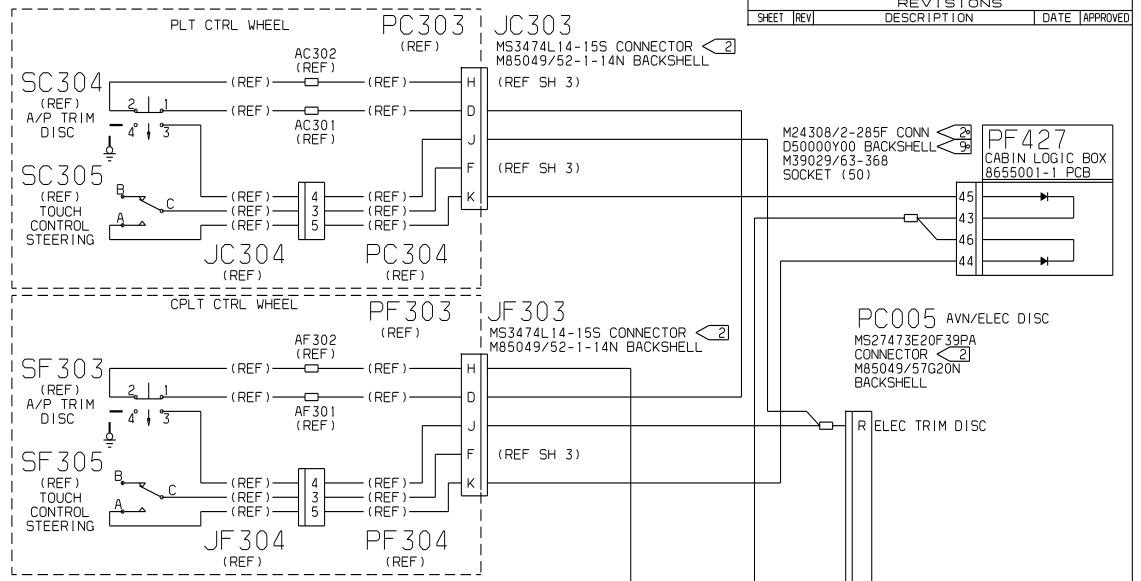


|            |                 |  |
|------------|-----------------|--|
| DATE       | 4/2/2001        | CESSNA AIRCRAFT COMPANY<br>AIRCRAFT DIVISION<br>P.O. BOX 7704<br>WICHITA, KANSAS 67277 |
| DRAWN      | GARY SCHWEITZER |  |
| GROUP      |                 | C/A-PRIMUS 1000<br>PILOTS DISPLAY &<br>GUIDANCE SYSTEM (IC-615)                        |
| CHECK      |                 |  |
| SECT       |                 | SIZE FSOM NO.    Dwg. NO.<br><b>F 71379</b> <b>*****</b>                               |
| PROJ       |                 |  |
| M.E.       |                 | FABRICATE PER CESSNA<br>PROCESS PER XXXXXXXXXXXX<br>WIRE TERMINATION PER DES2716       |
| OTHER      |                 |  |
| SCALE: SCL |                 | SHEET 3 OF 6   |





| REVISIONS |     |             |      |          |
|-----------|-----|-------------|------|----------|
| SHEET     | REV | DESCRIPTION | DATE | APPROVED |
|           |     |             |      |          |



|                      |                 |                          |          |              |
|----------------------|-----------------|--------------------------|----------|--------------|
| DATE                 | 4/2/2001        | CESSNA AIRCRAFT COMPANY  |          |              |
| DRAWN                | GARY SCHWEITZER | AIRCRAFT DIVISION        |          |              |
| GROUP                |                 | P.O. BOX 7704            |          |              |
| CHECK                |                 | WICHITA, KANSAS 67277    |          |              |
| SECT                 |                 |                          |          |              |
| PROJ                 |                 | C/A-PRIMUS 1000          |          |              |
| M.E.                 |                 | PILOTS DISPLAY &         |          |              |
| OTHER                |                 | GUIDANCE SYSTEM (IC-615) |          |              |
| FABRICATE PER        | CES2506         | SIZE                     | FSOJ NO. | DWG NO.      |
| PROCESS PER          | XXXXXXXXXXXXXX  | <b>F71379</b>            |          |              |
| WIRE TERMINATION PER | CES2718         | SCALE                    | SCL      | SHEET 6 OF 6 |