

NOTES:

1. THIS DRAWING FILED IN CCD.
- 62 SELECT "7017000-98801 (LEFT SIDE)" FOR THE LEFT SIDE AND "7017000-98801/99801 (RIGHT SIDE)" FOR THE RIGHT SIDE IC-615.
- 63 SELECT SINGLE QUE AS THE DEFAULT. IF THE AIRCRAFT IS FOR FOREIGN REGISTER, REFER TO THE NOTES IN THE AVIONICS INSTALLATION KIT (868XXXX WHERE XXXX IS THE A/C S/N) FOR CONFIGURATION REQUIREMENTS.
- 64 SELECT INCHES AS THE DEFAULT. IF THE AIRCRAFT IS FOR FOREIGN REGISTER, REFER TO THE NOTES IN THE AVIONICS INSTALLATION KIT (868XXXX WHERE XXXX IS THE A/C S/N) FOR CONFIGURATION REQUIREMENTS.
- 65 SELECT THE NUMBER OF FMS'S INSTALLED IN THE AIRCRAFT. SELECT SINGLE AS DEFAULT.
- 66 SELECT INTERNAL IF A HONEYWELL FMS IS INSTALLED IN THE AIRCRAFT. SELECT EXTERNAL FOR ALL OTHER FMS'S.
- 67 SELECT SINGLE AS DEFAULT. SELECT DUAL IF A SECOND ADF IS INSTALLED.
- 68 SELECT NOT INSTALLED AS DEFAULT. SELECT INSTALLED IF EGPWS IS INSTALLED.

- 69 SELECT DISABLED AS THE DEFAULT. IF THE AIRCRAFT IS FOR FOREIGN REGISTER, REFER TO THE NOTES IN THE AVIONICS INSTALLATION KIT (868XXXX WHERE XXXX IS THE A/C S/N) FOR CONFIGURATION REQUIREMENTS.
- 610 ON #1 SIDE, SELECT INTERNAL GPS #1 IF FMS #1 IS INSTALLED. ON #2 SIDE, SELECT INTERNAL GPS #2 IF FMS #2 IS INSTALLED. ON #2 SIDE, SELECT NONE IF FMS #2 IS NOT INSTALLED.
- 611 ON #1 SIDE, SELECT GPS #2 IF FMS #2 IS INSTALLED. ON #2 SIDE, SELECT GPS #1 IF FMS #2 IS INSTALLED. SELECT NONE IF THE AIRCRAFT ONLY HAS ONE FMS.
- 612 SELECT NOT INSTALLED AS DEFAULT. SELECT INSTALLED IF AFIS IS INSTALLED.
- 613 SELECT NOT INSTALLED AS DEFAULT. SELECT INSTALLED IF APU IS INSTALLED.
- 614 THE CONFIG MODULE PART NUMBER DETERMINES IF TELELINK IS INSTALLED. THIS IS BECAUSE THE TELELINK IS CONFIGURED IN THE HIDDEN AREA OF THE CONFIGURATION MODULE MEMORY. THEREFORE, THE ACTIVE PORTION OF THE CONFIG MODULE WILL REPORT DATALINK AS NOT INSTALLED AS SHOWN.

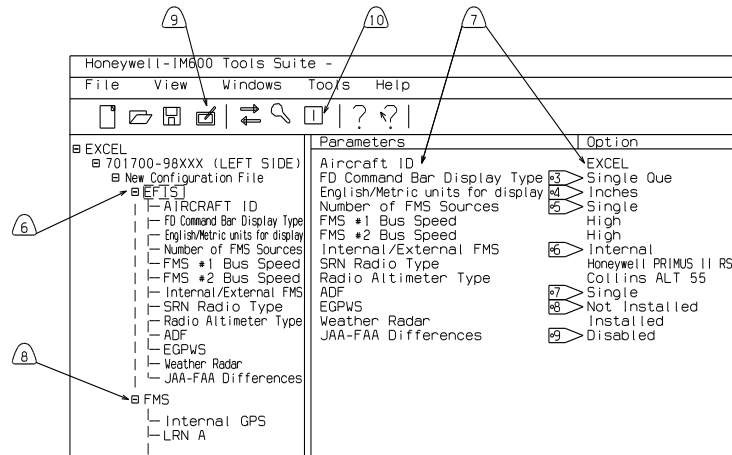


FIGURE 1. EFIS CONFIGURATIONS

CONFIGURATION MODULE PROGRAMMING PROCEDURE

1. INITIATE THE P1000 MAINTENANCE MODE:  
THIS CAN BE ACCOMPLISHED BY FIRST TUNING THE DESIRED ALTITUDE TO "970", THEN PRESSING BOTH THE "TEST" AND "GSPD" BUTTONS ON THE ON-SIDE DISPLAY CONTROLLER SIMULTANEOUSLY FOR APPROXIMATELY 5 SECONDS. THE PFD WILL THEN PROMPT THE USER TO PRESS BUTTON 6 TO INITIATE DOWNLOAD TO/FROM THE IC-615.
2. START THE IM-600 CONFIGURATION TOOLS SUITE.
3. CONNECT THE SERIAL PORT OF THE LAPTOP TO THE ON SIDE IC-615 DIAG CONNECTOR IN THE PEDESTAL.
4. CHOOSE FILE, NEW, FROM THE TOOL MENU.
5. CHOOSE THE FOLLOWING FROM THE CREATE CONFIGURATION FILE DIALOG BOX:  

SELECT MANUFACTURE	CESSNA
SELECT AIRCRAFT	EXCEL
SELECT LRU PART NUMBER	701700-98801 (LEFT SIDE) 62
- 6 FROM THE TREE MENU ON THE LEFT, SELECT EFIS. THE BOX ON THE RIGHT WILL DISPLAY TWO COLUMNS, PARAMETER AND OPTION.
- 7 TO CHANGE THE CONFIGURATION CLICK ON THE PARAMETER TO CHANGE AND THEN CLICK ON THE OPTION. A PULL DOWN MENU WILL APPEAR WITH THE AVAILABLE OPTIONS. SELECT THE OPTIONS SHOWN IN FIGURE 1 EXCEPT AS NOTED.
- 8 AFTER THE EFIS PARAMETERS ARE CONFIGURED, SELECT FMS FROM THE TREE MENU ON THE LEFT. THE FMS PARAMETERS AND OPTIONS WILL APPEAR SIMILAR TO FIGURE 2. SELECT THE OPTIONS SHOWN IN FIGURE 2 EXCEPT AS NOTED.
- 9 PRESS THE PROGRAM BUTTON (OR FILE MENU, PROGRAM IM600). SAVE THE CONFIGURATION WHEN PROMPTED. THE CONFIGURATION WILL THEN BE LOADED INTO THE CONFIG MODULE.
- 10 AFTER THE CONFIG MODULE HAS BEEN LOADED, PRESS THE VIEW USER CONFIGURATION FILE BUTTON (OR SELECT FROM THE VIEW MENU). VERIFY THE CONFIGURATION.
11. AFTER VERIFYING, SELECT FILE AND CLOSE. REPEAT STEPS 1 THROUGH 9 FOR THE OPPOSITE SIDE.

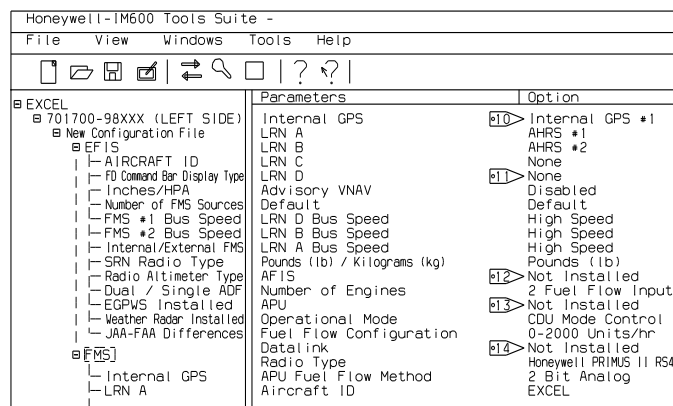


FIGURE 2. HONEYWELL FMS CONFIGURATIONS.

DATE	1/5/2001	CESSNA AIRCRAFT COMPANY	
DRAWN	GARY SCHWEITZER	AIRCRAFT DIVISION	
GROUP		P.O. BOX 7704	
CHECK		WICHITA, KANSAS 67277	
SECT		IM-600/IC-615 SYSTEM PROGRAMMING	
PROJ			
M.E.			
OTHER			
F71379		SIZE	FSOJ NO.
8612127		DWG NO.	
SCALE		SHEET 1 OF 1	
FABRICATE PER CES260A		CEC FORM 1872	
PROCESS PER XXXXXXXXXXXXX			
WIRE TERMINATION PER CES271E			

8612127