

NOTES:

1. ALL WIRE PER MIL-W-81044/12, 22 AWG, EXCEPT AS NOTED.
- 2 AFFIX CM2987-5 ID TAG NEAR PLUG.
- 3 REFER TO 8654500 FOR LIGHTING AND GROUND BLOCK/STUD LOCATIONS.
- 4 TRI-STAR ELECTRONICS INC., PASO ROBLES, CA.
- 5 AEROSPACE OPTICS INC., FT. WORTH, TX., CI 32245.
- 6 AMP INC., HARRISBURG, PA., CI 32245.
7. AN ASTERISK PRECEDING A LETTER INDICATES LOWER CASE.
- 8 THE POLARIZING POSTS ARE INCLUDED WITH THE CONNECTOR AS LOOSE EQUIPMENT. THEY ARE TO BE INSTALLED IN THE CONNECTOR DURING ASSEMBLY. THE POLARIZATION POSITION IS TO BE THE SAME AS THE MATING CONNECTOR ON THE ASSOCIATED VENDOR BOX.

9 POSITRONIC IND INC., SPRINGFIELD, MO., CI 28198

10 MASON ELECTRIC CO INC., GLENDALE, CA.

11. TWO CONDUCTOR SHIELDED WIRE PER M27500-**ML2T08.
THREE CONDUCTOR SHIELDED WIRE PER M27500-**ML3T08.
TWISTED PAIR PER M27500-XXML2U00
(* ** AWG 22 EXCEPT AS NOTED)

12. MISC HARDWARE:
- M81824/1-1 SPLICE
 - D436-38 SPLICE
 - S1367-1-6 TERMINAL
 - S1367-1-8 TERMINAL
 - S2974N3 SOLDER SLEEVE
 - S2974-3 SHIELD TERMINATION

13. LINES SHOWN AS BOLD SHALL MEET THE HIRF GUIDELINES AS SPELLED OUT ON THE AVIONICS CABLE KIT, AND MANUFACTURED IN ACCORDANCE WITH CESSNA SPECIFICATION CSAM012.

14 SUNBANK ELECTRONICS INC., PASO ROBLES, CA.

15 ITT CANNON, SANTA ANA, CALIF.

16 FOR 20 AWG WIRE USE, TRISTAR PIN P/N 219-2220-079 WITH EXTRACTION TOOL: M81969/14-01.

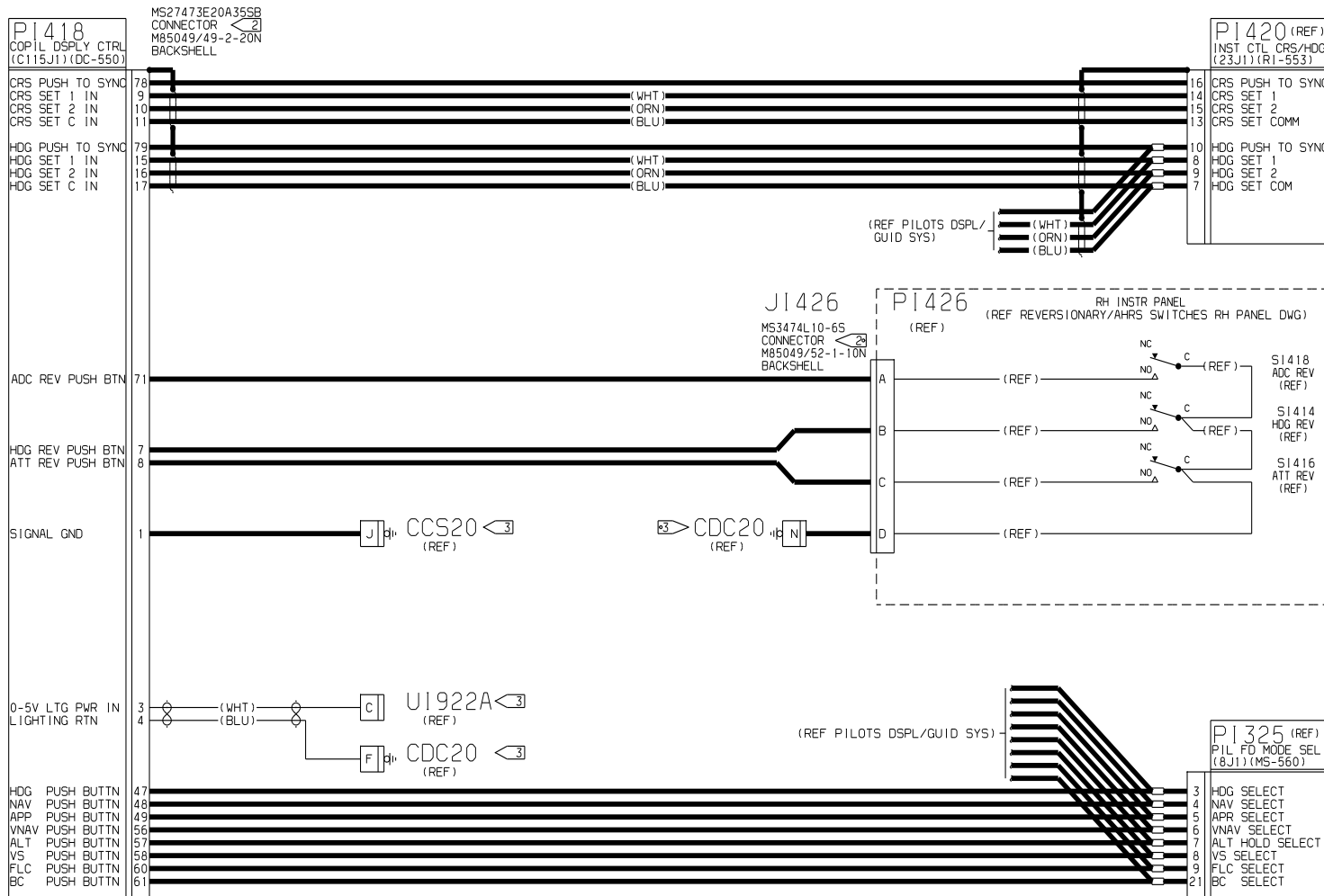
17 THE CONFIGURATION MODULE IS MOUNTED ON THE BACK OF THE IC-615 TRAY. REFER TO 865XXX (5XXX IS THE AIRCRAFT SERIAL) FOR THE INSTALLATION AND PART NUMBER.

18 HONEYWELL INC. PHOENIX, AZ.

19 VENDOR SUPPLIED WIRES ATTACHED TO CONFIGURATION MODULE.

20 WIRES TO BE 6" MAXIMUM.

REVISIONS				
SHEET	REV	DESCRIPTION	DATE	APPROVED
	A	BY REVISION:	05/24/99	
2		1) ADDED J/PN302.	5AS	
1		2) ADDED NOTE 20.		
1		3) ADDED "CCD DRAWING" TO TITLE.		
EFF: EC41982 WO XL-2427				



DATE		02/11/99	
DRAWN	ANDY SEATON	CESSNA AIRCRAFT COMPANY AIRCRAFT DIVISION P.O. BOX 7704 WICHITA, KANSAS 67277	
CHECK		C/A - PRIMUS 1000	
SECT		COPILOTS DISPLAY &	
PROJ		GUIDANCE SYSTEM (IC-615)	
M.E.		SIZE	FSDH NO. / Dwg NO.
OTHER		SCALE: SCL	
FABRICATE PER DES2606		SHEET 1 OF 3	
PROCESS PER XXXXXXXXXXXXX		CESSNA FORM 1872	
WIRE TERMINATION PER DES2716			

A

PN369 (REF)
DSPL/GUID CMPTR
(190J2B) (IC-615)

FD1/2 SEL GND IN 55
PN367 (REF)
DSPL/GUID CMPTR
(190J2A) (IC-615)
FD1 SEL GND OUT 99

PN900 (REF)
AVIONICS NOSE
J-BOX

ANN BRT/DIM PWR 47
ANN TEST GND OUT 22
ANN BRT/DIM PWR OUT 48
ANN BRT/DIM PWR IN 62

PN366 (REF)
DSPL/GUID CMPTR
(C190J1B) (IC-615)
CLOCK (1M-600) 36

PN370 (REF)
DSPL/GUID CMPTR
(C190J2B) (IC-615)
IM-600 DATA TX 46
IM-600 15 VDC 47
IM-600 DATA RX 58
IM-600 PWR RTN 63

CK PFD 2 GND OUT 21
RT IC SELECT PROG 94

ARINC 429 IN H 29
ARINC 429 IN L 30

RH SEC RSB H 53
RH SEC RSB L 54
GO-AROUND GND IN 71

PN368 (REF)
DSPL/GUID CMPTR
(C190J2A) (IC-615)
GEAR DN GND IN 61
WOW GND IN 64

FD2 SEL GND OUT 99

RAD ALT + 50
RAD ALT - 51
RAD ALT VALID 49
RA TEST GND OUT 97

PRIMARY RSB H 19
PRIMARY RSB L 20

PRIMARY WC + 17
PRIMARY WC - 18

JN302
RE54-106S
CONN.

PN302
RE04-106P
CONN.

UN302 (REF)
CONFIG MODULE
(1M-600)
E1 (24) (BRN) (REF)
E2 (24) (YEL) (REF)
E3 (24) (RED) (REF)
E4 (24) (ORN) (REF)
E5 (24) (BLK) (REF)
CLOCK
SER DATA RX
15 VDC
SER DATA TX
PWR RTN

NLG20 (REF)

PN384 (REF)
AVIONICS NOSE
J-BOX
GO-AROUND GND OUT 46
GEAR DN GND OUT 58
WOW GND OUT 2

PN383 (REF)
AVIONICS NOSE
J-BOX
RAD ALT + 73
RAD ALT - 65
RAD ALT 22VDC REF 69
RA TEST GND IN 58

PB818 (REF) JB818 (REF)

(REF WEATHER RADAR DWG)

PB325 (REF) JB325 (REF)

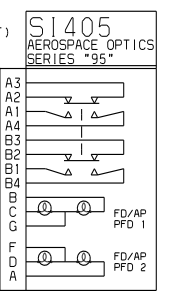
PB326 (REF) JB326 (REF)

PC005
AVN/ELEC DISC
(REF)

SC314
601-4301 SWITCH (REF)
COPILOTS GO-AROUND SW
THROTTLE QUADRANT ASSY

SC313 (REF)
PILOTS
GO-AROUND SW

95XX15B6-62547 CAP (REF)
95-44-12 MOM SW/IND BODY (REF)
18-200 CONNECTOR <2>
M39029/22-192 SOCKET (14)



PI418 (REF)
COPIL DSPL CTRL
(C115J1) (DC-550)
BRIGHTNESS POT H 50
BRIGHTNESS POT L 52
BRIGHTNESS POT W 51

UI922A (REF)

CDC20 (REF)

CCS20 (REF)

PF909
MS3476L22-41P
CONNECTOR <2>
M85049/51-1-22N
RT ANGLE BACKSHELL

RH CKT BKR PANEL
28VDC PFD 2 (REF)

PI424
COPILLOT DISPLAY
(C130J1) (DU-870)
BRIGHTNESS POT H 1
BRIGHTNESS POT L 13
BRIGHTNESS POT W 14

0-5V LTG PWR IN 23
LTG PWR RTN 24

POWER RETURN 04
POWER RETURN 09
POWER RETURN 106

WX BUS 3 H 69
WX BUS 3 L 70

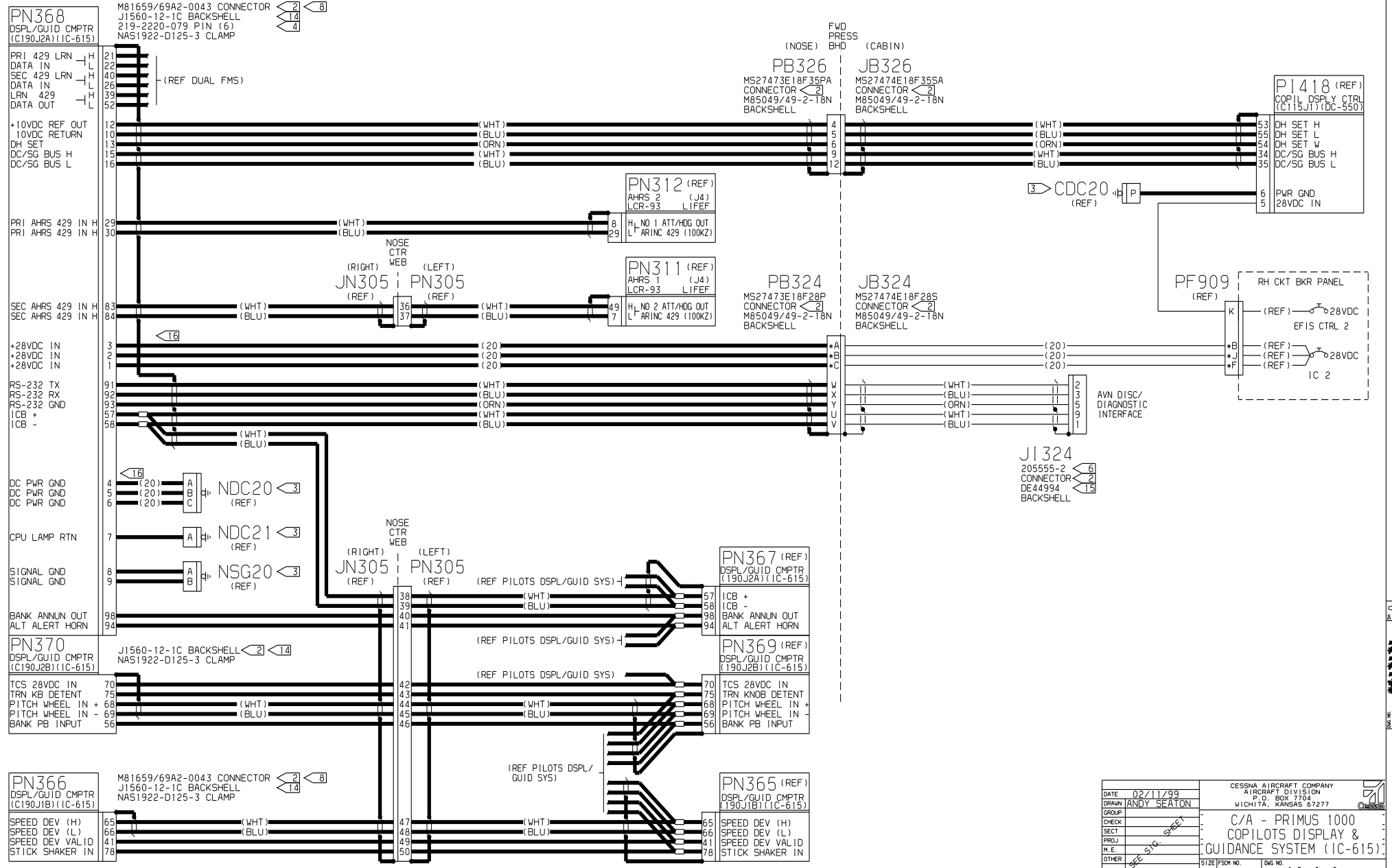
SIGNAL GND 63
SIGNAL GND 80

WX BUS 2 H 74
WX BUS 2 L 75

28VDC IN 01
28VDC IN 02
28VDC IN 03

WX BUS 1 (H) 77
WX BUS 1 (L) 78
WX BUS 1 TERM 64

DATE	02/11/99	CESSNA AIRCRAFT COMPANY AIRCRAFT DIVISION P.O. BOX 7794 WICHITA, KANSAS 67277
DRAWN	ANDY SEATON	
GROUP		C/A - PRIMUS 1000 COPILOTS DISPLAY & GUIDANCE SYSTEM (IC-615)
CHECK		
SECT		SIZE (FSCH NO.)
PROJ		
M.E.		DWG NO.
OTHER		
FABRICATE PER DES2606		SCALE: SCL
PROCESS PER XXXXXXXXXXXXX		
WIRE TERMINATION PER DES2716		SHEET 2 OF 3



DATE	02/11/99	CESSNA AIRCRAFT COMPANY	
DRAWN	ANDY SEATON	AIRCRAFT DIVISION	
GROUP		P.O. BOX 7704	
CHECK		WICHITA, KANSAS 67277	
SEC. SGT.		C/A - PRIMUS 1000	
PROD. J.		COPILOTS DISPLAY &	
M. E.		GUIDANCE SYSTEM (IC-615)	
OTHER		SIZE (FSON NO.)	DWG NO.
FABRICATE PER CES2604		SCALE: SCL	
PROCESS PER XXXXXXXXXXXXX		SHEET 3 OF 3	
WIRE TERMINATION PER CES2716		CES FORM 1872	