

NOTES:

- 1) THE CONTENTS OF THIS DRAWING ARE FOR REFERENCE ONLY. IF THERE IS A CONFLICT BETWEEN THE CONTENTS OF THIS DRAWING AND A CABLE ASSY FOR A PARTICULAR AIRCRAFT, THE CONTENTS OF THE CABLE ASSY SHALL TAKE PRIORITY.
- 2) ALL OTHER NOTES PERTAINING TO A PARTICULAR SHEET SHALL BE FOUND ON THAT SHEET.
- 3) THIS DRAWING IS FILED IN CCD.

REVISIONS			
SHEET	REV	DESCRIPTION	DATE APPROVED

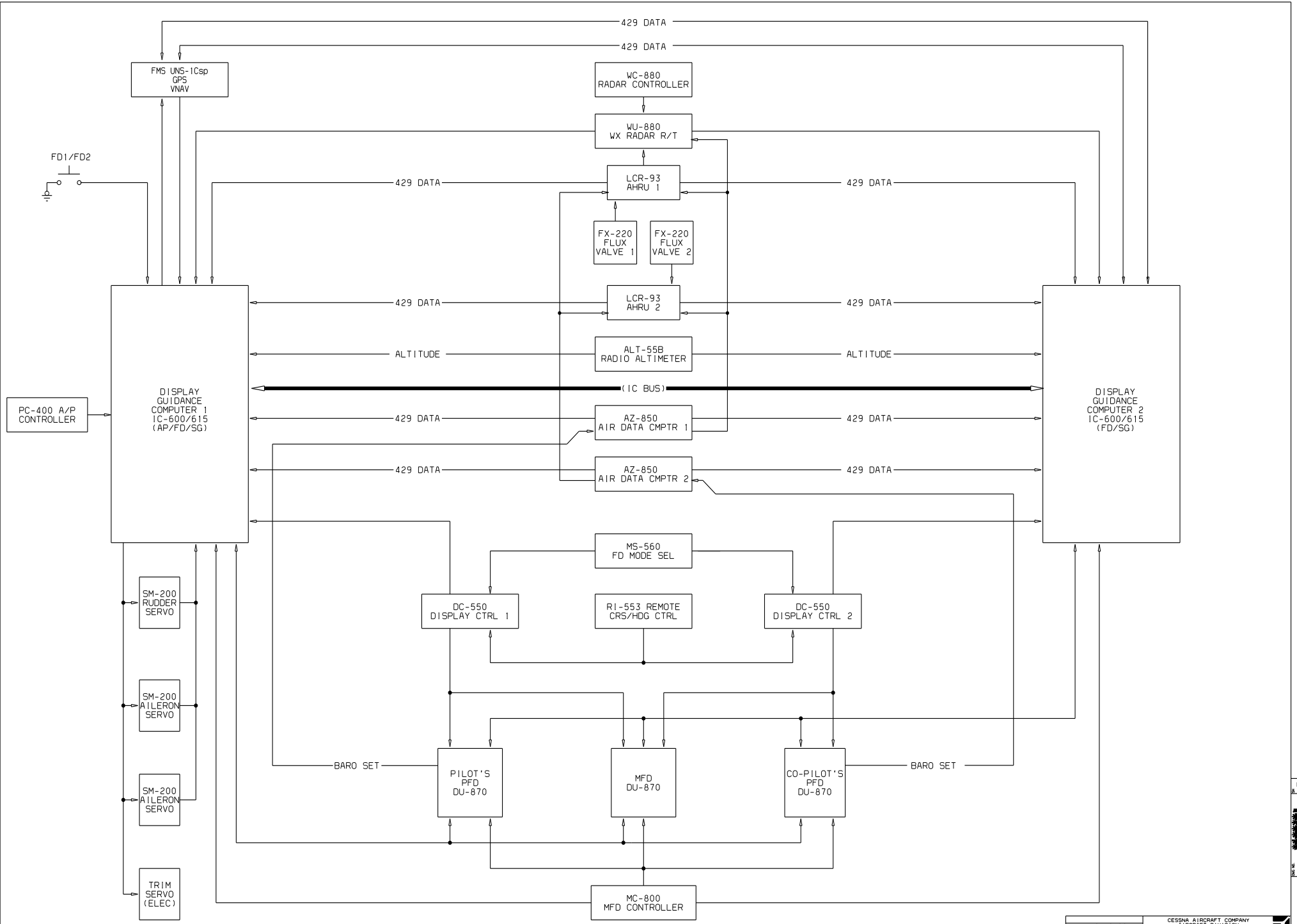
SHEET	REFDES	SUBJECT
1		INDEX SHEET
2		560 EXCEL PRIMUS 1000 DISPLAY/GUIDANCE SYSTEM BLOCK DIAGRAM
3		J-BOX/LOGIC BOX COVERS
4	PN381	B CARD NOSE J-BOX-JUMPER BOARD
5	PN382	B CARD NOSE J-BOX-JUMPER BOARD
6	PN383	D CARD NOSE J-BOX-SWITCHING/JUMPER BOARD
7	PN385	D CARD NOSE J-BOX-SWITCHING/JUMPER BOARD
8	PN900	E CARD NOSE J-BOX-LIGHTING/DIM/TEST PCB
9	PN384	F CARD NOSE J-BOX-SWITCHING/JUMPER BOARD
10	PN384	F CARD SCHEMATIC SHEET 1
11	PN384	F CARD SCHEMATIC SHEET 2
12	PF301	FAN FAIL/SENSE LOGIC BOARD (LOCATED IN CABIN AVIONICS LOGIC BOX)
13	PF427	EFIS INTERFACE BOARD (LOCATED IN CABIN AVIONICS LOGIC BOX)
14	PF505	STDBY CTRL HEAD LTG BOARD (LOCATED IN CABIN AVIONICS LOGIC BOX)
15	PF701	FMS INTERFACE BOARD (LOCATED IN CABIN AVIONICS LOGIC BOX)
16	PF506	HF INTERFACE BOARD

INDEX SHEET

FOR REFERENCE ONLY

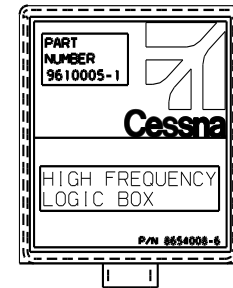
DATE	10/10/00	CESSNA AIRCRAFT COMPANY	
DRAWN	CHRIS WARREN	AIRCRAFT DIVISION	
GROUP		P.O. BOX 7704	
CHECK		WICHITA, KANSAS 67277	
SECT		AVIONICS SYSTEM REFERENCE INFORMATION	
PROJ			
M. E.		SIZE	F 71379
OTHER		SCALE	NONE
FABRICATE PER_CES2606		SHEET 1 OF 16	
PROCESS PER_XXXXXXX		CES FORM 1872	
WIRE TERMINATION PER_CES2718			

1
B
C
D
E
F
G
H
I
J
K
L
M
N
O
P
Q
R
S
T
U
V
W
X
Y
Z
AA
AB
AC
AD
AE
AF
AG
AH
AI
AJ
AK
AL
AM
AN
AO
AP
AQ
AR
AS
AT
AU
AV
AW
AX
AY
AZ
BA
BB
BC
BD
BE
BF
BG
BH
BI
BJ
BK
BL
BM
BN
BO
BP
BQ
BR
BS
BT
BU
BV
BW
BX
BY
BZ
CA
CB
CC
CD
CE
CF
CG
CH
CI
CJ
CK
CL
CM
CN
CO
CP
CQ
CR
CS
CT
CU
CV
CW
CX
CY
CZ
DA
DB
DC
DD
DE
DF
DG
DH
DI
DJ
DK
DL
DM
DN
DO
DP
DQ
DR
DS
DT
DU
DV
DW
DX
DY
DZ
EA
EB
EC
ED
EE
EF
EG
EH
EI
EJ
EK
EL
EM
EN
EO
EP
EQ
ER
ES
ET
EU
EV
EW
EX
EY
EZ
FA
FB
FC
FD
FE
FF
FG
FH
FI
FJ
FK
FL
FM
FN
FO
FP
FQ
FR
FS
FT
FU
FV
FW
FX
FY
FZ
GA
GB
GC
GD
GE
GF
GG
GH
GI
GJ
GK
GL
GM
GN
GO
GP
GQ
GR
GS
GT
GU
GV
GW
GX
GY
GZ
HA
HB
HC
HD
HE
HF
HG
HH
HI
HJ
HK
HL
HM
HN
HO
HP
HQ
HR
HS
HT
HU
HV
HW
HX
HY
HZ
IA
IB
IC
ID
IE
IF
IG
IH
II
IJ
IK
IL
IM
IN
IO
IP
IQ
IR
IS
IT
IU
IV
IW
IX
IY
IZ
JA
JB
JC
JD
JE
JF
JG
JH
JI
JJ
JK
JL
JM
JN
JO
JP
JQ
JR
JS
JT
JU
JV
JW
JX
JY
JZ
KA
KB
KC
KD
KE
KF
KG
KH
KI
KJ
KK
KL
KM
KN
KO
KP
KQ
KR
KS
KT
KU
KV
KW
KX
KY
KZ
LA
LB
LC
LD
LE
LF
LG
LH
LI
LJ
LK
LL
LM
LN
LO
LP
LQ
LR
LS
LT
LU
LV
LW
LX
LY
LZ
MA
MB
MC
MD
ME
MF
MG
MH
MI
MJ
MK
ML
MM
MN
MO
MP
MQ
MR
MS
MT
MU
MV
MW
MX
MY
MZ
NA
NB
NC
ND
NE
NF
NG
NH
NI
NJ
NK
NL
NM
NN
NO
NP
NQ
NR
NS
NT
NU
NV
NW
NX
NY
NZ
OA
OB
OC
OD
OE
OF
OG
OH
OI
OJ
OK
OL
OM
ON
OO
OP
OQ
OR
OS
OT
OU
OV
OW
OX
OY
OZ
PA
PB
PC
PD
PE
PF
PG
PH
PI
PJ
PK
PL
PM
PN
PO
PP
PQ
PR
PS
PT
PU
PV
PW
PX
PY
PZ
QA
QB
QC
QD
QE
QF
QG
QH
QI
QJ
QK
QL
QM
QN
QO
QP
QQ
QR
QS
QT
QU
QV
QW
QX
QY
QZ
RA
RB
RC
RD
RE
RF
RG
RH
RI
RJ
RK
RL
RM
RN
RO
RP
RQ
RR
RS
RT
RU
RV
RW
RX
RY
RZ
SA
SB
SC
SD
SE
SF
SG
SH
SI
SJ
SK
SL
SM
SN
SO
SP
SQ
SR
SS
ST
SU
SV
SW
SX
SY
SZ
TA
TB
TC
TD
TE
TF
TG
TH
TI
TJ
TK
TL
TM
TN
TO
TP
TQ
TR
TS
TT
TU
TV
TW
TX
TY
TZ
UA
UB
UC
UD
UE
UF
UG
UH
UI
UJ
UK
UL
UM
UN
UO
UP
UQ
UR
US
UT
UU
UV
UW
UX
UY
UZ
VA
VB
VC
VD
VE
VF
VG
VH
VI
VJ
VK
VL
VM
VN
VO
VP
VQ
VR
VS
VT
VU
VV
VW
VX
VY
VZ
WA
WB
WC
WD
WE
WF
WG
WH
WI
WJ
WK
WL
WM
WN
WO
WP
WQ
WR
WS
WT
WU
WV
WW
WX
WY
WZ
XA
XB
XC
XD
XE
XF
XG
XH
XI
XJ
XK
XL
XM
XN
XO
XP
XQ
XR
XS
XT
XU
XV
XW
XX
XY
XZ
YA
YB
YC
YD
YE
YF
YG
YH
YI
YJ
YK
YL
YM
YN
YO
YP
YQ
YR
YS
YT
YU
YV
YW
YX
YZ
ZA
ZB
ZC
ZD
ZE
ZF
ZG
ZH
ZI
ZJ
ZK
ZL
ZM
ZN
ZO
ZP
ZQ
ZR
ZS
ZT
ZU
ZV
ZW
ZX
ZY
ZZ



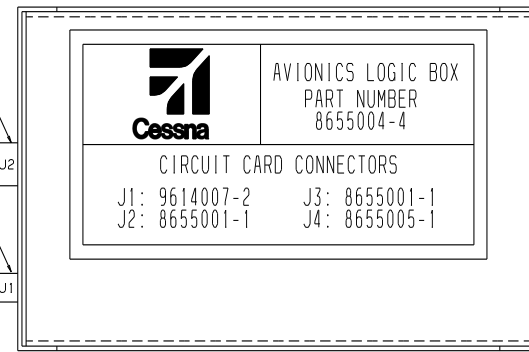
560-XL PRIMUS 1000 DISPLAY/GUIDANCE SYSTEM BLOCK DIAGRAM

DATE	10/10/00	CESNA AIRCRAFT COMPANY	
GROUP		AIRCRAFT DIVISION	
DESIGN	CHRIS WARREN	P.O. BOX 7704	
CHECK		WICHITA, KANSAS 67277	
REVISION			
PROJ.			
M.E.			
OTHER			
FABRICATE PER	CES2500	F 71379	
PROCESS PER	CES2500		
WIRE TERMINATION PER	CES2716		



HIGH FREQUENCY LOGIC BOX ASSY P/N 9610005-1
CONTAINS 9601160-1 HF/FLITEPHONE LOGIC BOARD PF506

HIGH FREQUENCY LOGIC BOX (OPTIONAL INSTALLATION)



CABIN AVIONICS LOGIC BOX ASSY P/N 8655004-4
CONTAINS J1: 9614007-2 FAN SENSE LOGIC BOARD
J2: 8655001-1 EFIS INTERFACE BOARD
J3: 8655001-1 FMS INTERFACE BOARD
J4: 8655005-1 STDBY CTRL HEAD LTG BOARD

CABIN AVIONICS LOGIC BOX

8655001-1 PC BOARD ASSY
PF427

9614007-2 PC BOARD ASSY
PF301

8655001-1 PC BOARD ASSY
PF701

8655005-1 PC BOARD ASSY
PF505



AVIONICS J-BOX
8655003-1 J-BOX ASSY
CESSNA AIRCRAFT CO.
WICHITA, KS
P/C BOARDS INSTALLED

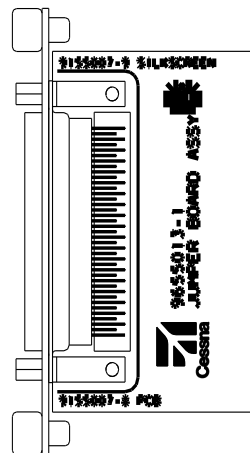
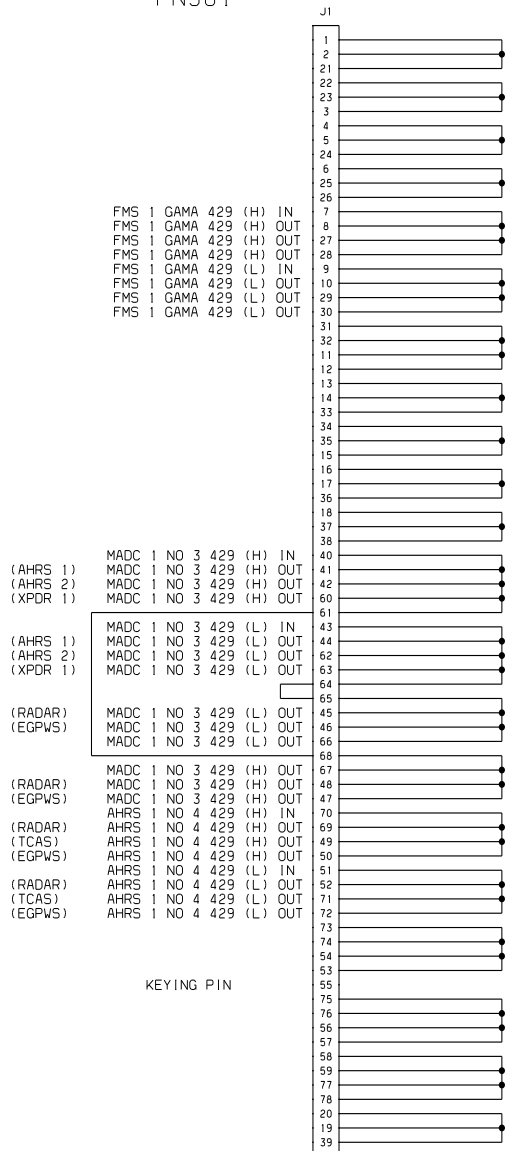
9655013-1 PN381	C
9655013-1 PN382	C
8655002-1 PN383	O
8655002-1 PN385	O
9655019-1 PN900	E
9655016-1 PN384	F

P/N 8655003-6

NOSE AVIONICS J-BOX

DATE	10/10/00	CESSNA AIRCRAFT COMPANY AIRCRAFT DIVISION P.O. BOX 7704 WICHITA, KANSAS 67277		
DRN	CHRIS WARREN			
GROUP		AVIONICS SYSTEM REFERENCE INFORMATION		
CHECK				
SECT				
PROJ				
M. E.				
OTHER		SIZE	FSOJ NO.	DWG NO.
FABRICATE PER_CES2604		F71379		
PROCESS PER_XXXXXXX		*****		
WIRE TERMINATION PER_CES2716		SCALE	SCL	SHEET 3 OF 16

PN38 1

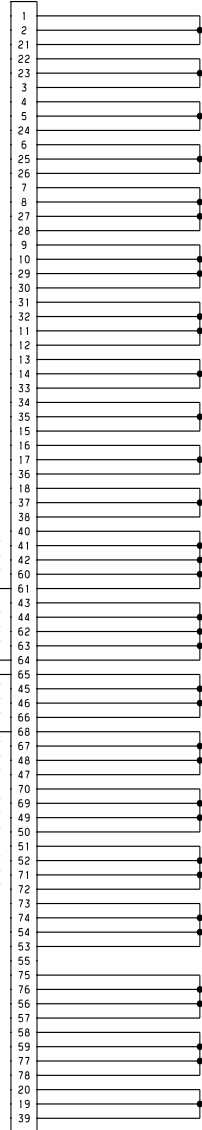


NOSE J-BOX
B CARD SCHEMATIC
JUMPER BOARD ASSY

DATE	10/10/00	CESSNA AIRCRAFT COMPANY AIRCRAFT DIVISION P.O. BOX 7704 WICHITA, KANSAS 67277	
DRAWN	CHRIS WARREN	AVIONICS SYSTEM REFERENCE INFORMATION	
GROUP		SIZE	FSOM NO.
CHECK		DWG NO.	
DECT		F 71379	
PROJ		*****	
M. E.		SCALE	SCL
OTHER		SHEET 4 OF 16	
FABRICATE PER_CES2606		WIRE TERMINATION PER_CES2716	

PN382

J1



FMS 2 GAMA 429 (H) IN
 FMS 2 GAMA 429 (H) OUT
 FMS 2 GAMA 429 (H) OUT
 FMS 2 GAMA 429 (H) OUT
 FMS 2 GAMA 429 (L) IN
 FMS 2 GAMA 429 (L) OUT
 FMS 2 GAMA 429 (L) OUT
 FMS 2 GAMA 429 (L) OUT

(AHR5 1) MADC 2 NO 3 429 (H) IN
 (AHR5 2) MADC 2 NO 3 429 (H) OUT
 MADC 2 NO 3 429 (H) OUT
 MADC 2 NO 3 429 (H) OUT

(AHR5 1) MADC 2 NO 3 429 (L) IN
 (AHR5 2) MADC 2 NO 3 429 (L) OUT
 MADC 2 NO 3 429 (L) OUT
 MADC 2 NO 3 429 (L) OUT

(FDR) MADC 2 NO 3 429 (L) OUT
 (EGPWS) MADC 2 NO 3 429 (L) OUT
 (XPDR 2) MADC 2 NO 3 429 (L) OUT

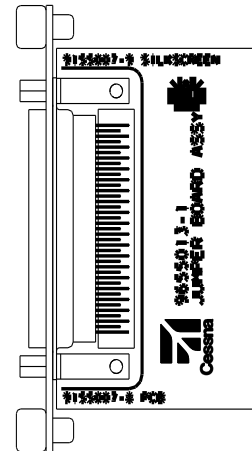
(XPDR 2) MADC 2 NO 3 429 (H) OUT
 (FDR) MADC 2 NO 3 429 (H) OUT
 (EGPWS) MADC 2 NO 3 429 (H) OUT

(EMER HS1) AHR5 2 NO 4 429 (H) IN
 AHR5 2 NO 4 429 (H) OUT
 AHR5 2 NO 4 429 (H) OUT

(EGPWS) AHR5 2 NO 4 429 (H) OUT
 AHR5 2 NO 4 429 (L) IN
 (EMER HS1) AHR5 2 NO 4 429 (L) OUT
 AHR5 2 NO 4 429 (L) OUT

(EGPWS) AHR5 2 NO 4 429 (L) OUT

KEYING PIN

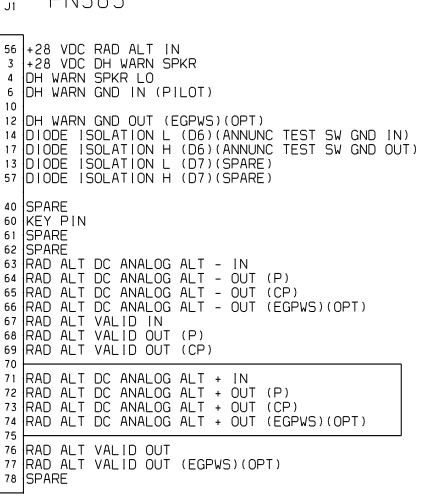
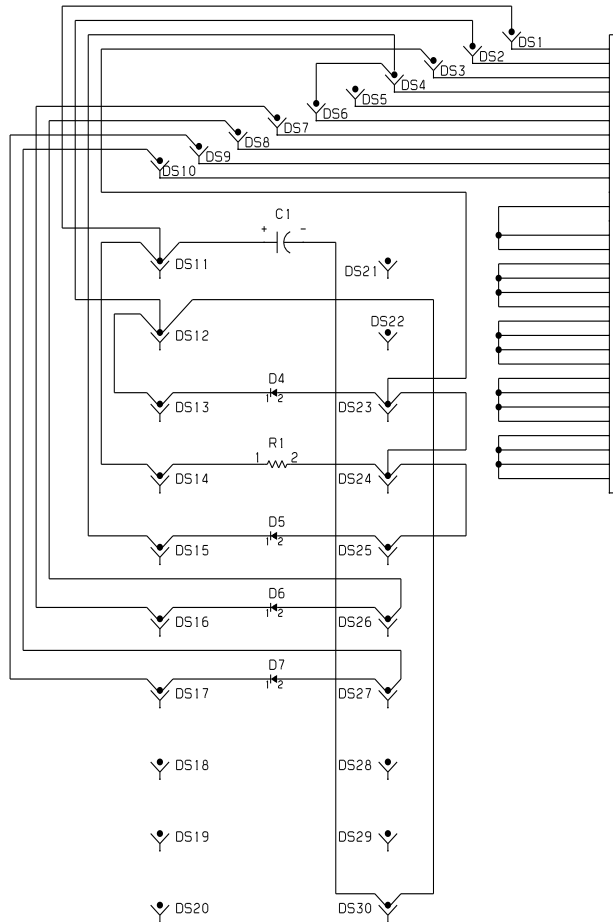
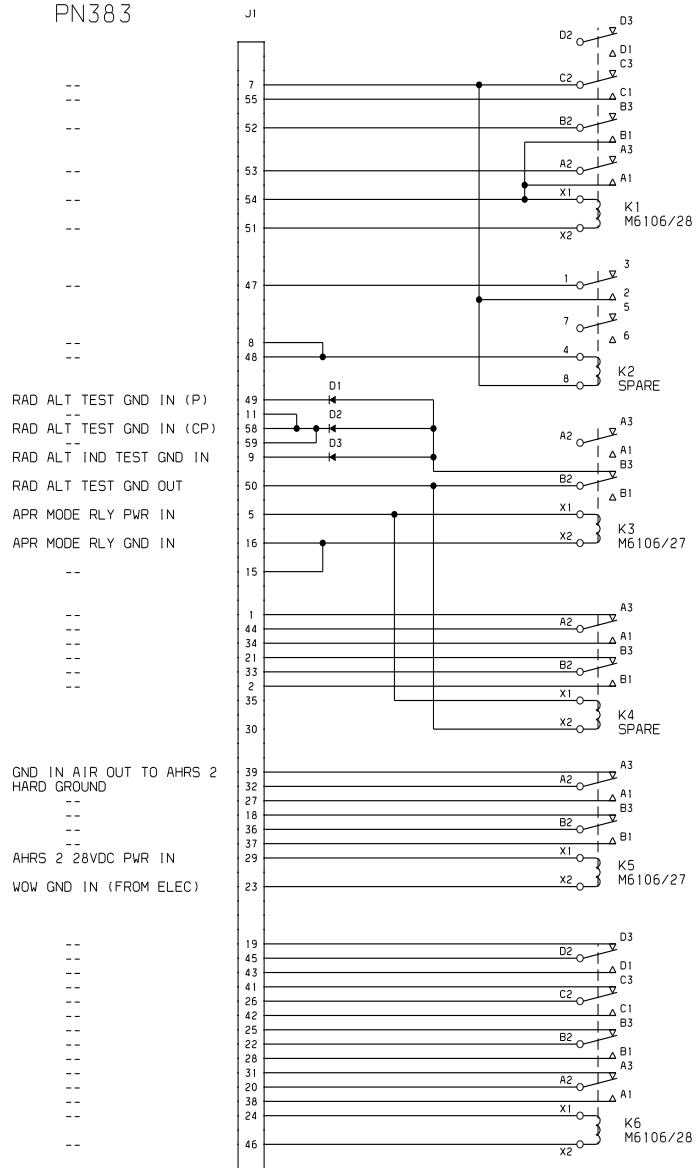


NOSE J-BOX
 B CARD SCHEMATIC
 JUMPER BOARD ASSY

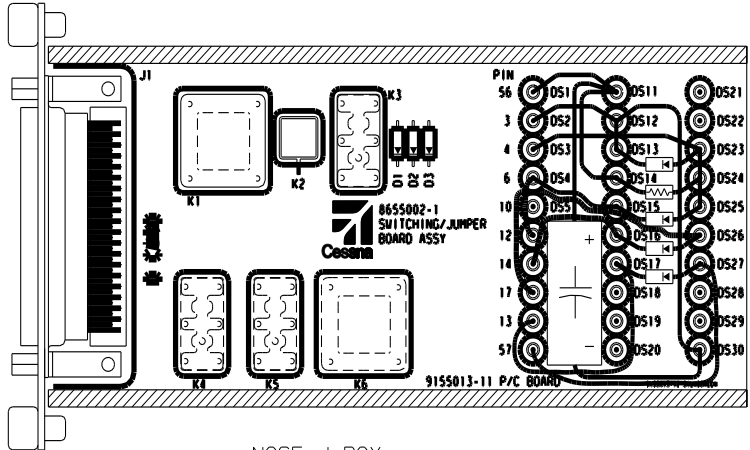
DATE	10/10/00	CESSNA AIRCRAFT COMPANY	
DRAWN	CHRIS WARREN	AIRCRAFT DIVISION	
GROUP		P.O. BOX 7704	
CHECK		WICHITA, KANSAS 67277	
DECT		Cessna	
PROJ		AVIONICS SYSTEM	
M.E.		REFERENCE	
OTHER		INFORMATION	
SIZE: FSCM NO.		FIG NO.	
FABRICATE PER: CES2606		F 71379	*****
PROCESS PER: XXXXX333XXXX		SCALE: SCL	SHEET 5 OF 16
WIRE TERMINATION PER: CES2716			

PN383

PN383



REF DES	PART NUMBER	DESCRIPTION
C1	TVA1312	CAPACITOR
D1	1N4006	DIODE
D2	1N4006	DIODE
D3	1N4006	DIODE
D4	1N4006	DIODE
D5	1N4006	DIODE
D6	1N4006	DIODE
D7	1N4006	DIODE
DS1	1559-2	TURRET POST
DS2	1559-2	TURRET POST
DS3	1559-2	TURRET POST
DS4	1559-2	TURRET POST
DS5	1559-2	TURRET POST
DS6	1559-2	TURRET POST
DS7	1559-2	TURRET POST
DS8	1559-2	TURRET POST
DS9	1559-2	TURRET POST
DS10	1559-2	TURRET POST
DS11	1559-2	TURRET POST
DS12	1559-2	TURRET POST
DS13	1559-2	TURRET POST
DS14	1559-2	TURRET POST
DS15	1559-2	TURRET POST
DS16	1559-2	TURRET POST
DS17	1559-2	TURRET POST
DS18	1559-2	TURRET POST
DS19	1559-2	TURRET POST
DS20	1559-2	TURRET POST
DS21	1559-2	TURRET POST
DS22	1559-2	TURRET POST
DS23	1559-2	TURRET POST
DS24	1559-2	TURRET POST
DS25	1559-2	TURRET POST
DS26	1559-2	TURRET POST
DS27	1559-2	TURRET POST
DS28	1559-2	TURRET POST
DS29	1559-2	TURRET POST
DS30	1559-2	TURRET POST
J1	S2968-60	CONNECTOR
	DD784R7NT2C1235.4	REF P/N FOR J1 CONNECTOR
K1	M6106/28-003	RELAY
K2	NOT INSTALLED	RELAY
K3	M6106/27-003	RELAY
K4	NOT INSTALLED	RELAY
K5	M6106/27-003	RELAY
K6	M6106/28-003	RELAY
R1	CM3908-472G	RESISTOR



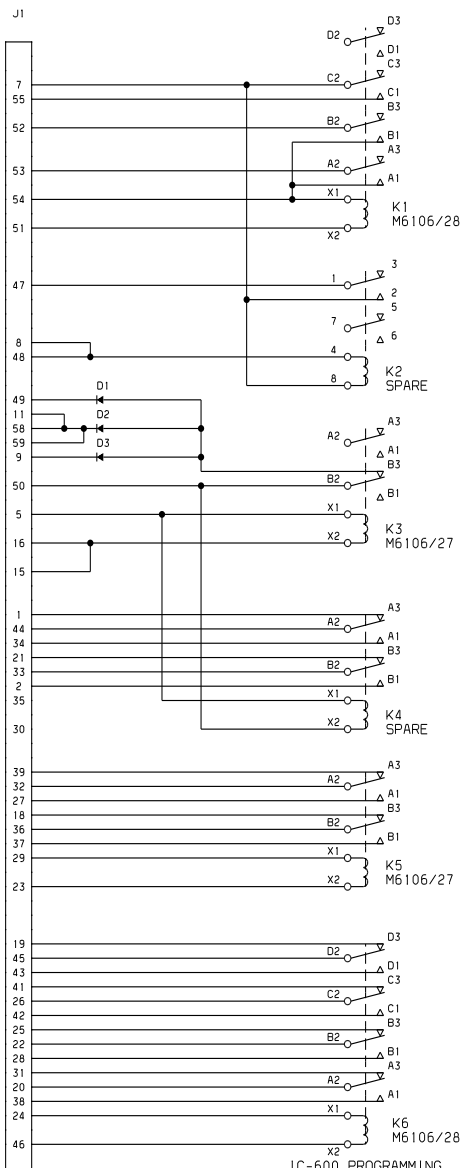
NOSE J-BOX
D CARD SWITCHING/JUMPER PCB ASSY

DATE	10/10/00	CESSNA AIRCRAFT COMPANY AIRCRAFT DIVISION P.O. BOX 7704 WICHITA, KANSAS 67277	
GROUP	CHRIS WARREN		
CHECK		AVIONICS SYSTEM REFERENCE INFORMATION	
SECT			
PRD.J			
M.E.			
OTHER		FABRICATE PER CES2606 PROCESS PER XXXXXXXXXXXXX WIRE TERMINATION PER CES2116	SIZE (FSON NO.) DWG NO. F17379
SCALE: SCL		SHEET 6 OF 16	

CES FORM 1872

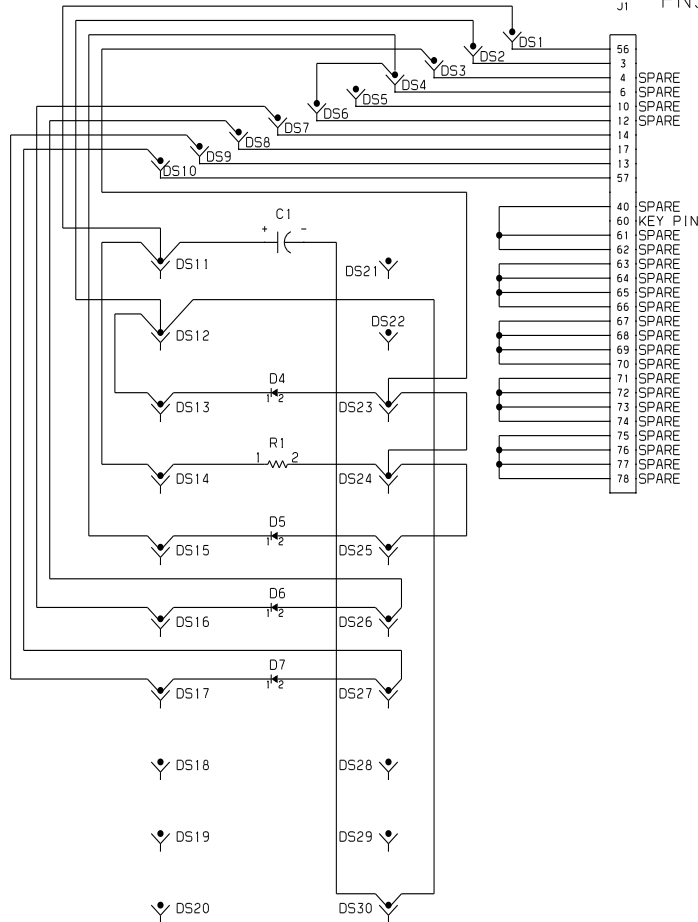
PN385

--
 755
 --
 52
 --
 STICK SHAKER PWR OUT
 STICK SHAKER PWR IN
 STICK SHAKER RELAY GND
 --
 47
 --
 8
 48
 --
 49
 58
 59
 9
 --
 50
 --
 16
 --
 15
 --
 1
 44
 34
 21
 33
 2
 35
 30
 --
 39
 32
 27
 18
 36
 37
 29
 --
 23
 --
 19
 45
 43
 41
 26
 42
 25
 22
 28
 31
 20
 38
 24
 --
 46

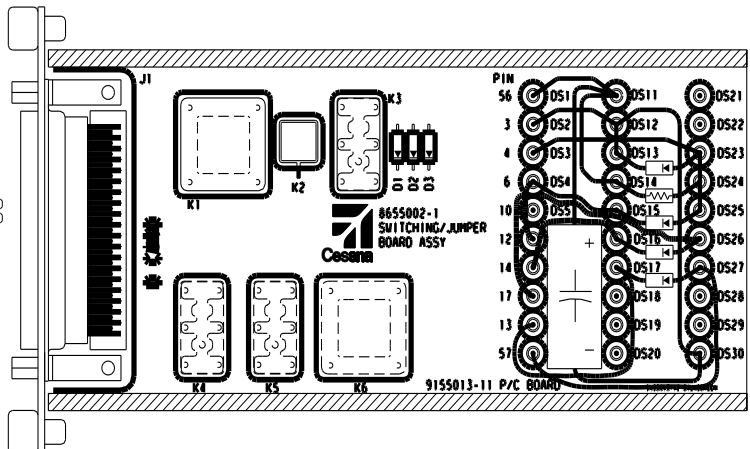


IC-600 PROGRAMMING FOR DUAL FMS USED WITH OPTIONAL FMS2
 CONNECTS FMS2 DATA TO IC2 WHEN FMS2 INSTL'D FOR SINGLE FMS INSTL CONNECTS FMS1 TO IC2

PN385



56
 3
 4
 6
 10
 12
 14
 17
 13
 57
 --
 40
 60
 61
 62
 63
 64
 65
 66
 67
 68
 69
 70
 71
 72
 73
 74
 75
 76
 77
 78



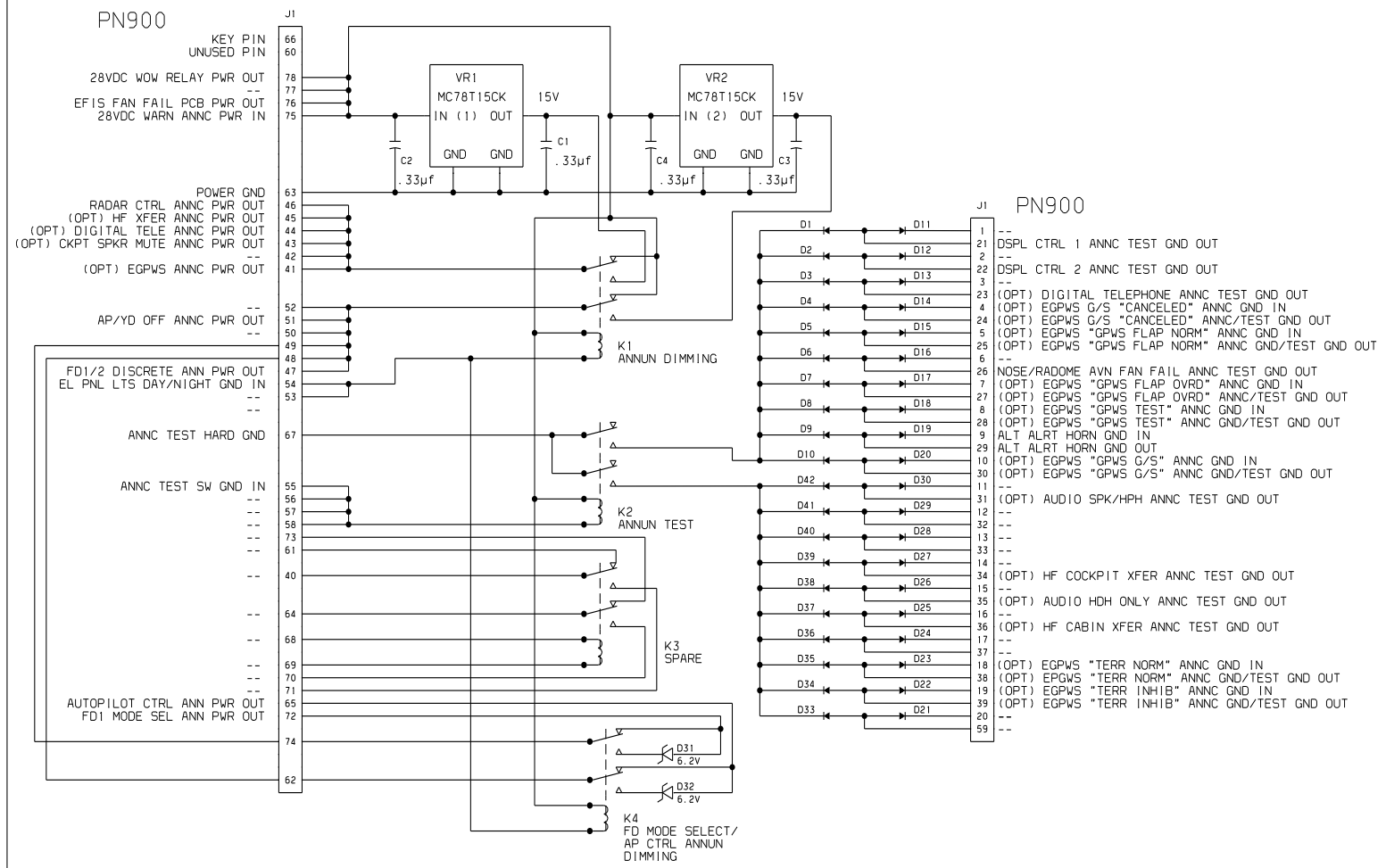
NOSE J-BOX
 D CARD SWITCHING/JUMPER PCB ASSY

REF DES	PART NUMBER	DESCRIPTION
C1	TV1312	CAPACITOR
D1	1N4006	DIODE
D2	1N4006	DIODE
D3	1N4006	DIODE
D4	1N4006	DIODE
D5	1N4006	DIODE
D6	1N4006	DIODE
D7	1N4006	DIODE
DS1	1559-2	TURRET POST
DS2	1559-2	TURRET POST
DS3	1559-2	TURRET POST
DS4	1559-2	TURRET POST
DS5	1559-2	TURRET POST
DS6	1559-2	TURRET POST
DS7	1559-2	TURRET POST
DS8	1559-2	TURRET POST
DS9	1559-2	TURRET POST
DS10	1559-2	TURRET POST
DS11	1559-2	TURRET POST
DS12	1559-2	TURRET POST
DS13	1559-2	TURRET POST
DS14	1559-2	TURRET POST
DS15	1559-2	TURRET POST
DS16	1559-2	TURRET POST
DS17	1559-2	TURRET POST
DS18	1559-2	TURRET POST
DS19	1559-2	TURRET POST
DS20	1559-2	TURRET POST
DS21	1559-2	TURRET POST
DS22	1559-2	TURRET POST
DS23	1559-2	TURRET POST
DS24	1559-2	TURRET POST
DS25	1559-2	TURRET POST
DS26	1559-2	TURRET POST
DS27	1559-2	TURRET POST
DS28	1559-2	TURRET POST
DS29	1559-2	TURRET POST
DS30	1559-2	TURRET POST
J1	S2968-60 DD78M4R7NT2C1235.4	CONNECTOR REF P/N FOR J1 CONNECTOR
K1	M6106/28-003	RELAY
K2	NOT INSTALLED	RELAY
K3	M6106/27-003	RELAY
K4	NOT INSTALLED	RELAY
K5	M6106/27-003	RELAY
K6	M6106/28-003	RELAY
R1	CM3908-472G	RESISTOR

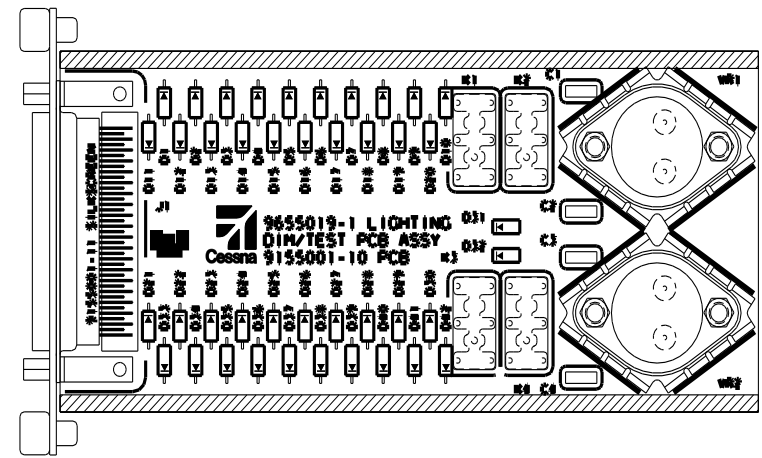
DATE 10/10/00
 DRAWN CHRIS WARREN
 GROUP
 CHECK
 SECT
 PROJ
 M. E.
 OTHER

CESSNA AIRCRAFT COMPANY
 AIRCRAFT DIVISION
 P.O. BOX 7704
 WICHITA, KANSAS 67277
 AVIONICS SYSTEM
 REFERENCE
 INFORMATION
 FABRICATE PER CES2606
 PROCESS PER XXXXXXXXXXXXX
 WIRE TERMINATION PER CES2718
 SIZE F50N NO. DWG NO.
F71379
 SCALE: SCL SHEET 7 OF 16

PN900



REF DES	PART NUMBER	DESCRIPTION	NOTE
C1	CK06BX334K	CAPACITOR .33µf	
C2	CK06BX334K	CAPACITOR .33µf	
C3	CK06BX334K	CAPACITOR .33µf	
C4	CK06BX334K	CAPACITOR .33µf	
D1	1N4006	DIODE	
D2	1N4006	DIODE	
D3	1N4006	DIODE	
D4	1N4006	DIODE	
D5	1N4006	DIODE	
D6	1N4006	DIODE	
D7	1N4006	DIODE	
D8	1N4006	DIODE	
D9	1N4006	DIODE	
D10	1N4006	DIODE	
D11	1N4006	DIODE	
D12	1N4006	DIODE	
D13	1N4006	DIODE	
D14	1N4006	DIODE	
D15	1N4006	DIODE	
D16	1N4006	DIODE	
D17	1N4006	DIODE	
D18	1N4006	DIODE	
D19	1N4006	DIODE	
D20	1N4006	DIODE	
D21	1N4006	DIODE	
D22	1N4006	DIODE	
D23	1N4006	DIODE	
D24	1N4006	DIODE	
D25	1N4006	DIODE	
D26	1N4006	DIODE	
D27	1N4006	DIODE	
D28	1N4006	DIODE	
D29	1N4006	DIODE	
D30	1N4006	DIODE	
D31	1N5341B	DIODE 6.2V ZENNER 5W	
D32	1N5341B	DIODE 6.2V ZENNER 5W	
D33	1N4006	DIODE	
D34	1N4006	DIODE	
D35	1N4006	DIODE	
D36	1N4006	DIODE	
D37	1N4006	DIODE	
D38	1N4006	DIODE	
D39	1N4006	DIODE	
D40	1N4006	DIODE	
D41	1N4006	DIODE	
D42	1N4006	DIODE	
J1	S2968-66	CONNECTOR	
	DD78M4R7NT2C1235.5	REF CONNECTOR FOR J1	
K1	M6106/27-003	RELAY	
K2	M6106/27-003	RELAY	
K3	M6106/27-003	RELAY	
K4	M6106/27-003	RELAY	
VR1	MC78T15CK	VOLT REG.	
VR2	MC78T15CK	VOLT REG.	



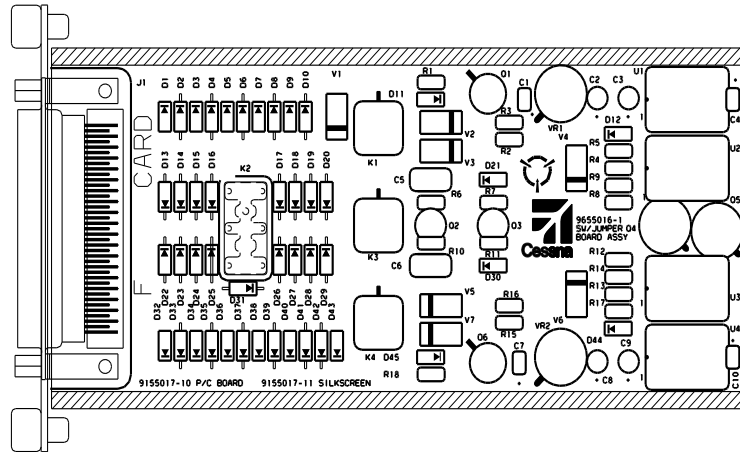
NOSE J-BOX
E CARD
LIGHTING DIM/TEST

DATE	10/10/00	CESSNA AIRCRAFT COMPANY AIRCRAFT DIVISION P.O. BOX 7704 WICHITA, KANSAS 67277	
DRAWN	CHRIS WARREN		
GROUP		AVIONICS SYSTEM REFERENCE INFORMATION	
CHECK			
SECT			
PRD.J			
M.E.			
OTHER		SIZE F50N NO.	DWG NO.
FABRICATE PER_CES2606		F71379	
PROCESS PER_XXXXXXX		*****	
WIRE TERMINATION PER_CES2718		SCALE: SCL	SHEET 6 OF 16

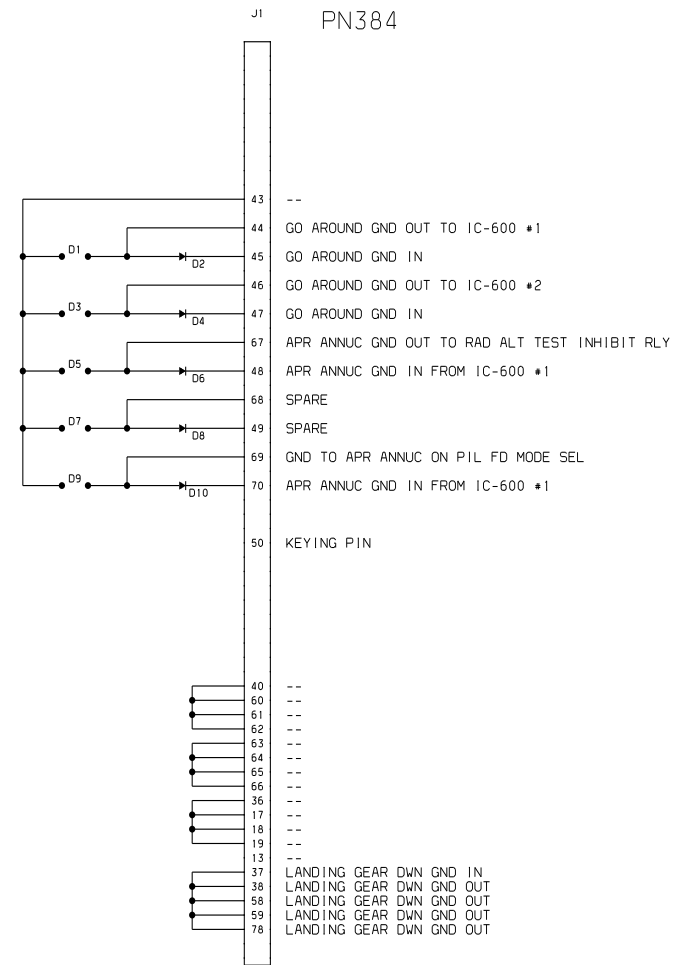
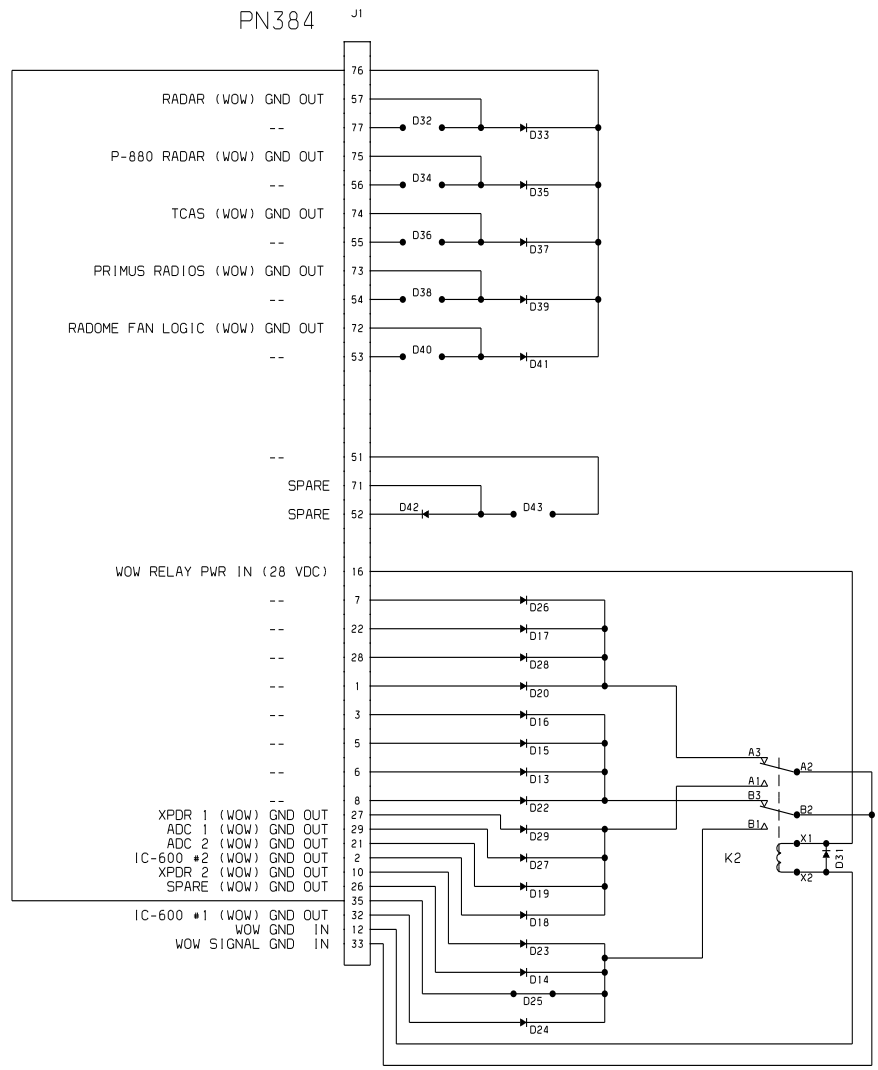
REF DES	PART NUMBER	DESCRIPTION	NOTE
C1	NOT INSTALLED	CAPACITOR, .1 uF	
C2	NOT INSTALLED	CAPACITOR, .33uF 50V	
C3	NOT INSTALLED	CAPACITOR, .33uF 50V	
C4	NOT INSTALLED	CAPACITOR, .1 uF	
C5	NOT INSTALLED	CAPACITOR, 1.0uF	
C6	NOT INSTALLED	CAPACITOR, 1.0uF	
C7	NOT INSTALLED	CAPACITOR, .1 uF	
C8	NOT INSTALLED	CAPACITOR, .33uF 50V	
C9	NOT INSTALLED	CAPACITOR, .33uF 50V	
C10	NOT INSTALLED	CAPACITOR, .1 uF	
D1	NOT INSTALLED	DIODE	
D2	1N4006	DIODE	
D3	NOT INSTALLED	DIODE	
D4	1N4006	DIODE	
D5	NOT INSTALLED	DIODE	
D6	1N4006	DIODE	
D7	NOT INSTALLED	DIODE	
D8	1N4006	DIODE	
D9	NOT INSTALLED	DIODE	
D10	1N4006	DIODE	
D11	NOT INSTALLED	DIODE	
D12	NOT INSTALLED	DIODE	
D13	1N4006	DIODE	
D14	1N4006	DIODE	
D15	1N4006	DIODE	
D16	1N4006	DIODE	

REF DES	PART NUMBER	DESCRIPTION	NOTE
D17	1N4006	DIODE	
D18	1N4006	DIODE	
D19	1N4006	DIODE	
D20	1N4006	DIODE	
D21	NOT INSTALLED	DIODE	
D22	1N4006	DIODE	
D23	1N4006	DIODE	
D24	1N4006	DIODE	
D25	NOT INSTALLED	DIODE	
D26	1N4006	DIODE	
D27	1N4006	DIODE	
D28	1N4006	DIODE	
D29	1N4006	DIODE	
D30	NOT INSTALLED	DIODE	
D31	1N4006	DIODE	
D32	NOT INSTALLED	DIODE	
D33	1N4006	DIODE	
D34	NOT INSTALLED	DIODE	
D35	1N4006	DIODE	
D36	NOT INSTALLED	DIODE	
D37	1N4006	DIODE	
D38	NOT INSTALLED	DIODE	
D39	1N4006	DIODE	
D40	NOT INSTALLED	DIODE	
D41	1N4006	DIODE	

REF DES	PART NUMBER	DESCRIPTION	NOTE
D42	1N4006	DIODE	
D43	NOT INSTALLED	DIODE	
D44	NOT INSTALLED	DIODE	
D45	NOT INSTALLED	DIODE	
J1	S2968-50 DD78M4R7NT2C1235	CONNECTOR REF CONNECTOR FOR J1	
K1	NOT INSTALLED	RELAY	
K2	M6106/27-003	RELAY	
K3	NOT INSTALLED	RELAY	
K4	NOT INSTALLED	RELAY	
O1	NOT INSTALLED	TRANSISTOR, PNP	
O2	NOT INSTALLED	TRANSISTOR, PNP	
O3	NOT INSTALLED	TRANSISTOR, PNP	
O4	NOT INSTALLED	TRANSISTOR, PNP	
O5	NOT INSTALLED	TRANSISTOR, PNP	
O6	NOT INSTALLED	TRANSISTOR, PNP	
R1	NOT INSTALLED	RESISTOR, 1/4W 100 ohm	
R2	NOT INSTALLED	RESISTOR, 1/4W 10 K ohm	
R3	NOT INSTALLED	RESISTOR, 1/4W 100 K ohm	
R4	NOT INSTALLED	RESISTOR, 1/4W 10 K ohm	
R5	NOT INSTALLED	RESISTOR, 1/4W 10 K ohm	
R6	NOT INSTALLED	RESISTOR, 1/4W 10 K ohm	
R7	NOT INSTALLED	RESISTOR, 1/4W 215 K ohm	
R8	NOT INSTALLED	RESISTOR, 1/4W 1 K ohm	
R9	NOT INSTALLED	RESISTOR, 1/4W 100 K ohm	
R10	NOT INSTALLED	RESISTOR, 1/4W 215 K ohm	
R11	NOT INSTALLED	RESISTOR, 1/4W 215 K ohm	
R12	NOT INSTALLED	RESISTOR, 1/4W 1 K ohm	
R13	NOT INSTALLED	RESISTOR, 1/4W 10 K ohm	
R14	NOT INSTALLED	RESISTOR, 1/4W 100 K ohm	
R15	NOT INSTALLED	RESISTOR, 1/4W 10 K ohm	
R16	NOT INSTALLED	RESISTOR, 1/4W 100 K ohm	
R17	NOT INSTALLED	RESISTOR, 1/4W 10 K ohm	
R18	NOT INSTALLED	RESISTOR, 1/4W 100 ohm	
U1	NOT INSTALLED	QUAD 2 INPUT SCHMITT TRIG.	
U2	NOT INSTALLED	DUAL D FLIP/FLOP	
U3	NOT INSTALLED	DUAL D FLIP/FLOP	
U4	NOT INSTALLED	QUAD 2 INPUT SCHMITT TRIG.	
V1	NOT INSTALLED	TRANSORB	
V2	NOT INSTALLED	TRANSORB	
V3	NOT INSTALLED	TRANSORB	
V4	NOT INSTALLED	TRANSORB	
V5	NOT INSTALLED	TRANSORB	
V6	NOT INSTALLED	TRANSORB	
V7	NOT INSTALLED	TRANSORB	
VR1	NOT INSTALLED	VOLTAGE REGULATOR, 15V	
VR2	NOT INSTALLED	VOLTAGE REGULATOR, 15V	



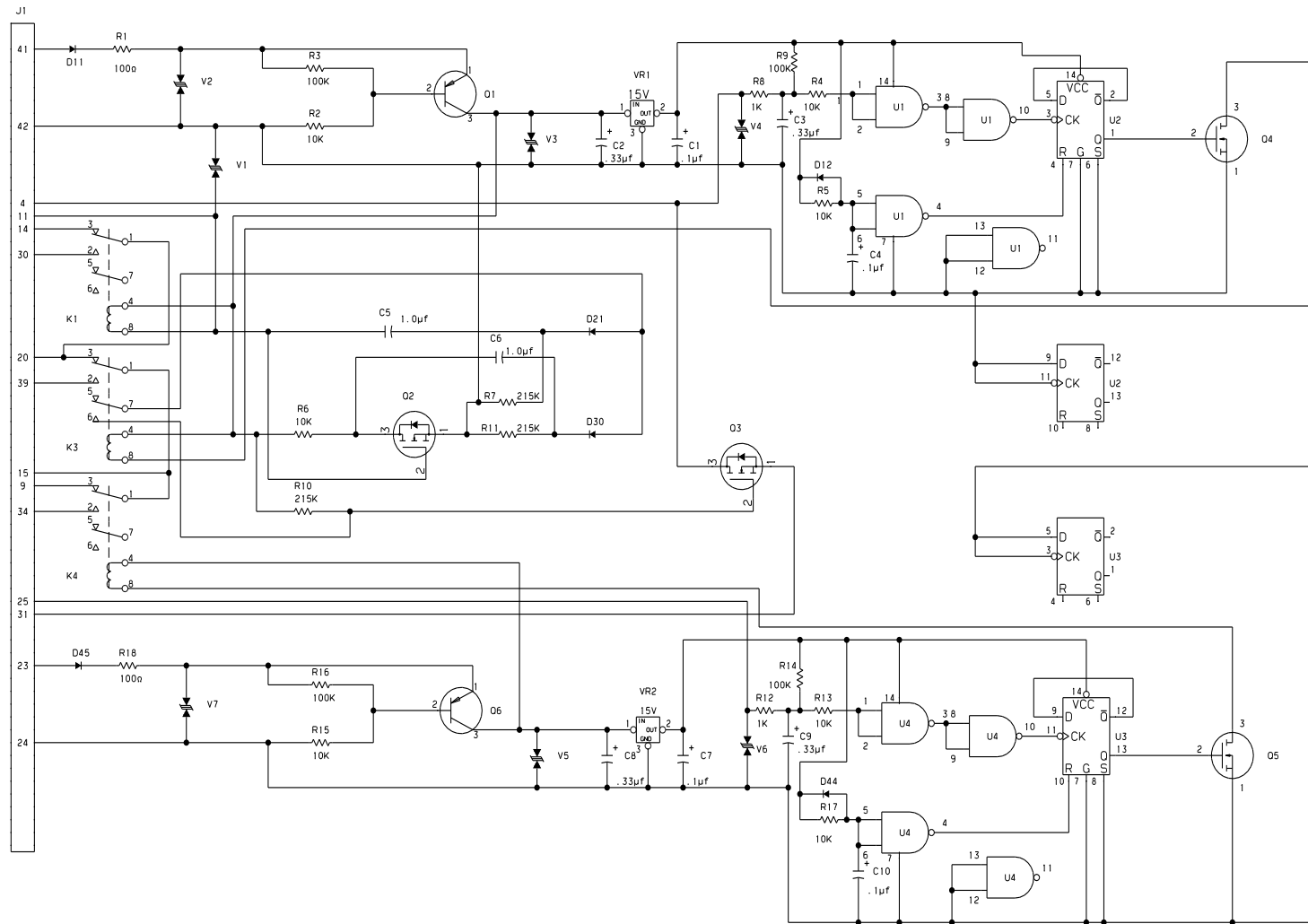
REVISIONS				
SHEET	REV	DESCRIPTION	DATE	APPROVED



NOSE J-BOX
F-BOARD SCHEMATIC
SHEET 1

DATE	10/10/00	CESSNA AIRCRAFT COMPANY AIRCRAFT DIVISION P.O. BOX 7704 WICHITA, KANSAS 67277	
DRN	CHRIS WARREN		
GROUP		AVIONICS SYSTEM REFERENCE INFORMATION	
CHECK			
SECT			
PRD			
M. E.			
OTHER		SIZE FSON NO. DWG NO. F71379	
FABRICATE PER	CES260A	SCALE	SCL
PROCESS PER	XXXXXXXXXXXXXX	SHEET 10 OF 16	
WIRE TERMINATION PER	CES271E	CES FORM 1872	

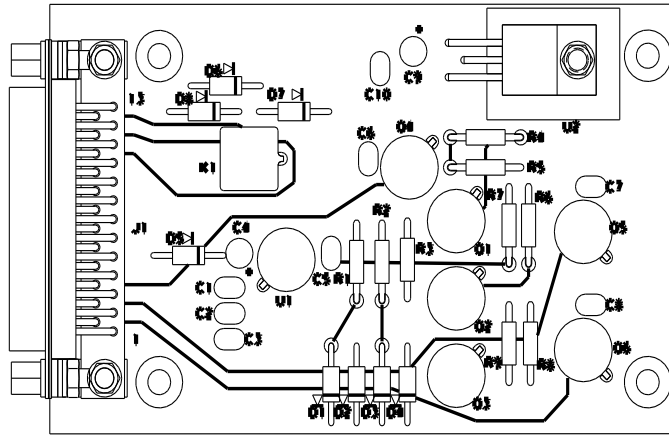
PN384



CIRCUIT IS NOT USED &
COMPONENTS ARE NOT INSTALLED
SHEET 2

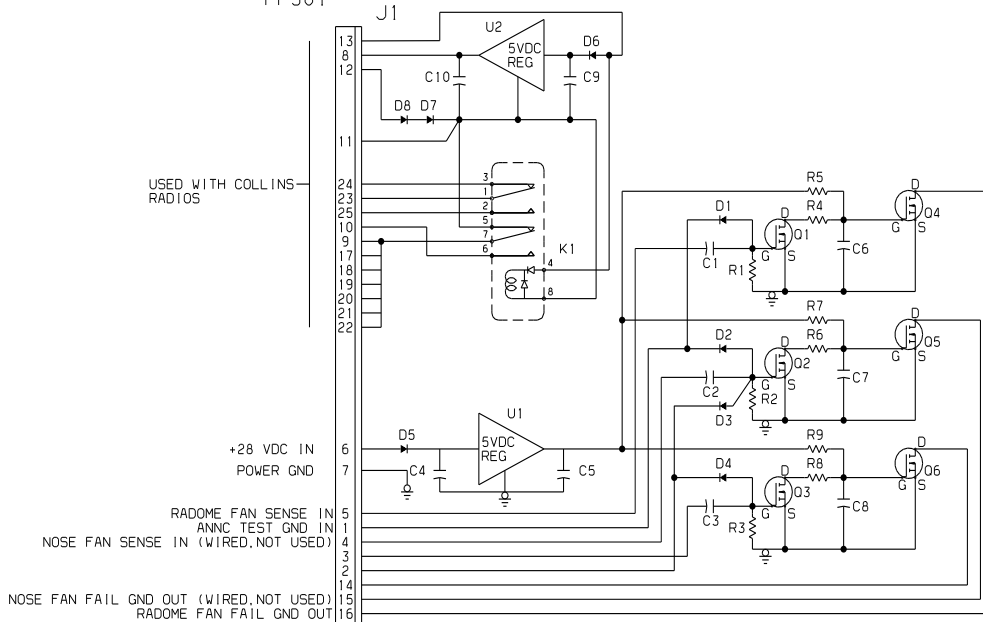
DATE	10/10/00	CESSNA AIRCRAFT COMPANY
DRAWN	CHRIS WARREN	AIRCRAFT DIVISION
GROUP		P. O. BOX 7704
CHECK		WICHITA, KANSAS 67277
DECT		
PROJ		
M. E.		
OTHER		
FABRICATE PER_CES2606		SIZE/FSM NO.
PROCESS PER_XXX3333333333		DWG NO.
WIRE TERMINATION PER_CES2716		F 71379
SCALE: SCL		*****
		SHEET 11 OF 16

9614007-2 LOGIC BOARD



DES.	PART NUMBER	DESCRIPTION	NOTES
C1	CY20C104M	CAPACITOR .1μFD	
C2	CY20C104M	CAPACITOR .1μFD	
C3	CY20C104M	CAPACITOR .1μFD	
C4	TDC334M050NLE	CAPACITOR .33μFD	
C5	CY20C104M	CAPACITOR .1μFD	
C6	CY20C154M	CAPACITOR .15μFD	
C7	CY20C154M	CAPACITOR .15μFD	
C8	CY20C154M	CAPACITOR .15μFD	
C9	TDC334M050NLE	CAPACITOR .33μFD	
C10	CY20C104M	CAPACITOR .1μFD	
D1	1N4006	DIODE	
D2	1N4006	DIODE	
D3	1N4006	DIODE	
D4	1N4006	DIODE	
D5	1N4006	DIODE	
D6	1N4006	DIODE	
D7	1N4006	DIODE	
D8	1N4006	DIODE	
J1	M24308/23-51	CONNECTOR	
K1	J114DD-26WL	RELAY	
Q1	VN67AB	MOS-FET TRANSISTOR	
Q2	VN67AB	MOS-FET TRANSISTOR	
Q3	VN67AB	MOS-FET TRANSISTOR	
Q4	VN67AB	MOS-FET TRANSISTOR	
Q5	VN67AB	MOS-FET TRANSISTOR	
Q6	VN67AB	MOS-FET TRANSISTOR	
R1	CM3908-103G	RESISTOR 10KΩ	
R2	CM3908-103G	RESISTOR 10KΩ	
R3	CM3908-103G	RESISTOR 10KΩ	
R4	CM3908-101G	RESISTOR 100Ω	
R5	CM3908-334G	RESISTOR 330KΩ	
R6	CM3908-101G	RESISTOR 100Ω	
R7	CM3908-334G	RESISTOR 330KΩ	
R8	CM3908-101G	RESISTOR 100Ω	
R9	CM3908-334G	RESISTOR 330KΩ	
U1	μA78M05HM	REGULATOR 5 VOLT	
U2	μA7805CKC	REGULATOR 5 VOLT	

PF 301



8655004-4 CABIN AVIONICS LOGIC BOX
9614007-2 FAN SENSE LOGIC BOARD ASSY
AND SCHEMATIC

DATE	10/10/00	CESSNA AIRCRAFT COMPANY AIRCRAFT DIVISION P.O. BOX 7704 WICHITA, KANSAS 67277	
DRN	CHRIS WARREN		
GROUP		AVIONICS SYSTEM REFERENCE INFORMATION	
CHECK			
SECT			
PRD J			
M. E.			
OTHER		SIZE F50N NO.	DWG NO.
FABRICATE PER_CES2606		F71379	
PROCESS PER_XXXXXXX		SCALE_SCL	
WIRE TERMINATION PER_CES2716		SHEET 12 OF 16	

CESSNA AIRCRAFT COMPANY
AIRCRAFT DIVISION
P.O. BOX 7704
WICHITA, KANSAS 67277

AVIONICS SYSTEM
REFERENCE
INFORMATION

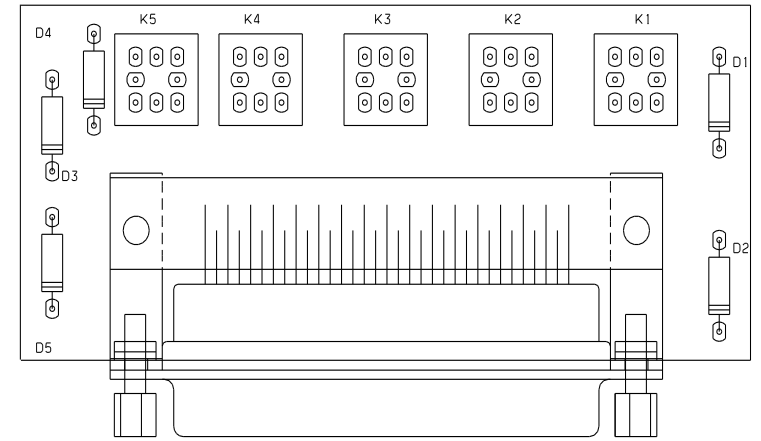
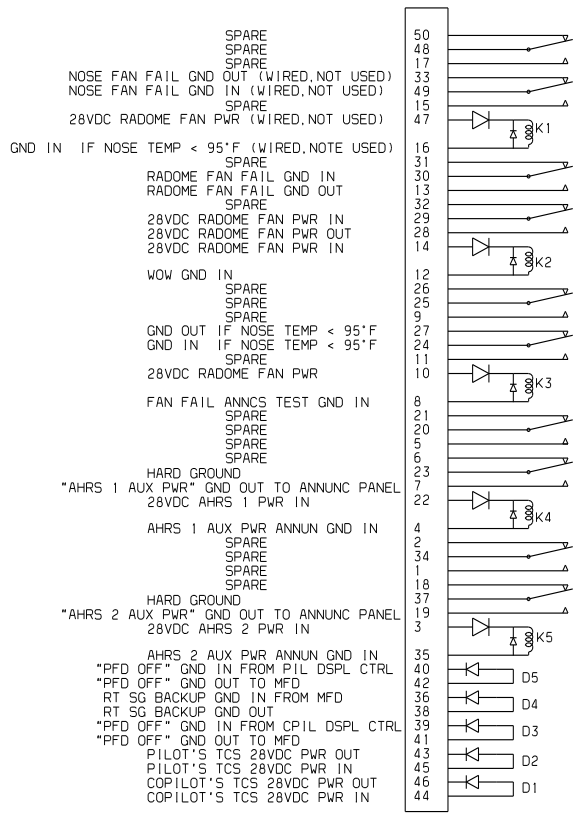
SCALE_SCL

SHEET 12 OF 16

CES FORM 1872

REF DES	PART NUMBER	NOMENCLATURE	NOTES
D1	1N4006	DIODE	
D2	1N4006	DIODE	
D3	1N4006	DIODE	
D4	1N4006	DIODE	
D5	1N4006	DIODE	
K1	114DD26A	RELAY	1 AMP
K2	114DD26A	RELAY	1 AMP
K3	114DD26A	RELAY	1 AMP
K4	114DD26A </td <td>RELAY</td> <td>1 AMP</td>	RELAY	1 AMP
K5	114DD26A	RELAY	1 AMP
J1	205869-2	PLUG	7 AMPS

PF427



8655001-1 BOARD ASSY

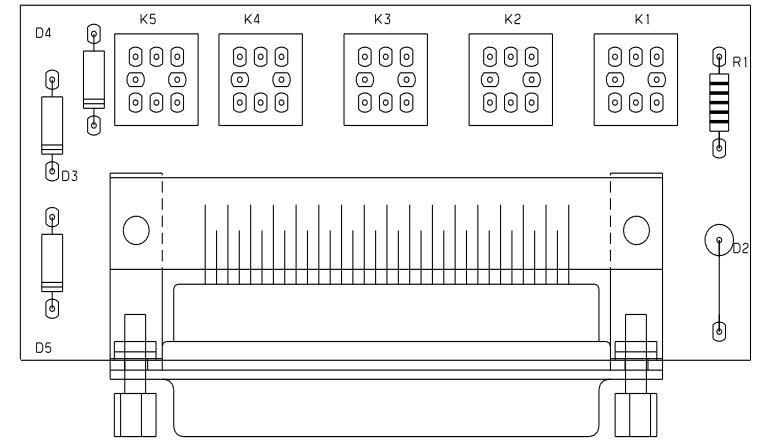
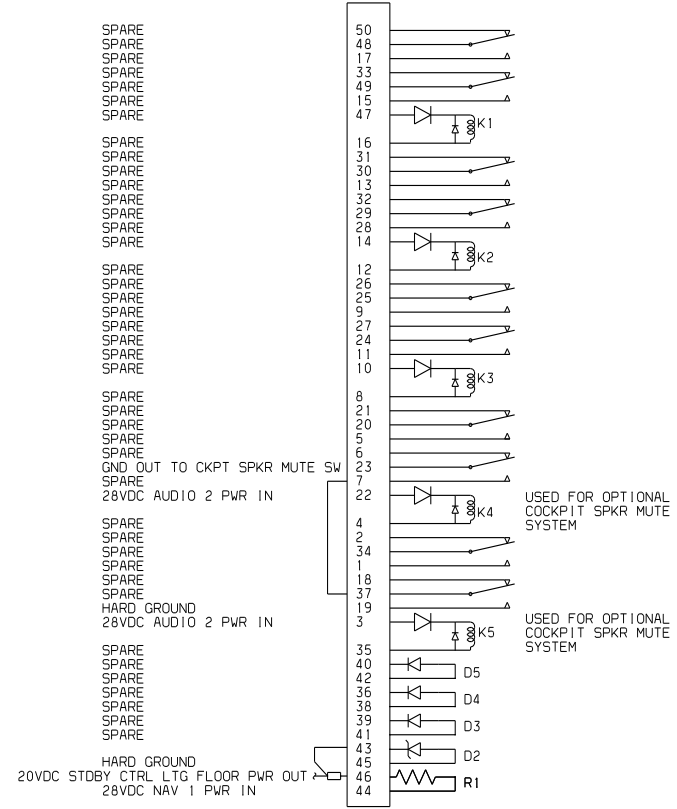
8655004-4 CABIN AVIONICS LOGIC BOX
8655001-1 EFIS INTERFACE BOARD ASSY AND SCHEMATIC

DATE	10/10/00	CESSNA AIRCRAFT COMPANY AIRCRAFT DIVISION P.O. BOX 7704 WICHITA, KANSAS 67277		
DRAWN	CHRIS WARREN			
GROUP		AVIONICS SYSTEM REFERENCE INFORMATION		
CHECK				
SECT				
PROJ				
M. E.				
OTHER		SIZE	F50N NO.	DWG NO.
FABRICATE PER CES2606		F 71379		
PROCESS PER XXXXXXXXXX		SCALE-SCL		
WIRE TERMINATION PER CES2716		SHEET 13 OF 16		

CESSNA FORM 1872

REF DES	PART NUMBER	NOMENCLATURE	NOTES
R1	RCR07G102JP	RESISTOR	1K 0.25 WATT
D2	1N5357B	ZENNER DIODE	20V 5 WATT
D3	1N4006	DIODE	
D4	1N4006	DIODE	
D5	1N4006	DIODE	
K1	114DD26A	RELAY	1 AMP
K2	114DD26A	RELAY	1 AMP
K3	114DD26A	RELAY	1 AMP
K4	114DD26A </td <td>RELAY</td> <td>1 AMP</td>	RELAY	1 AMP
K5	114DD26A	RELAY	1 AMP
J1	205869-2	PLUG	7 AMPS

PF505



8655005-1 BOARD ASSY

8655004-4 CABIN AVIONICS LOGIC BOX
8655005-1 STDBY CTRL HEAD LTG BOARD AND SCHEMATIC

DATE	10/10/00	CESSNA AIRCRAFT COMPANY AIRCRAFT DIVISION P.O. BOX 7704 WICHITA, KANSAS 67277			
DRN	CHRIS WARREN				
GROUP		AVIONICS SYSTEM REFERENCE INFORMATION			
CHECK					
SECT					
PRD J					
M. E.					
OTHER		SIZE	F71379	DWG NO.	*****
FABRICATE PER CES260A		SCALE		SHEET 14 OF 16	
PROCESS PER XXXXXXXXXX		SCALE		SHEET 14 OF 16	
WIRE TERMINATION PER CES271B		SCALE		SHEET 14 OF 16	

CESSNA AIRCRAFT COMPANY
AIRCRAFT DIVISION
P.O. BOX 7704
WICHITA, KANSAS 67277

AVIONICS SYSTEM
REFERENCE
INFORMATION

F71379

SCALE: SCL

SHEET 14 OF 16

CES FORM 1872

