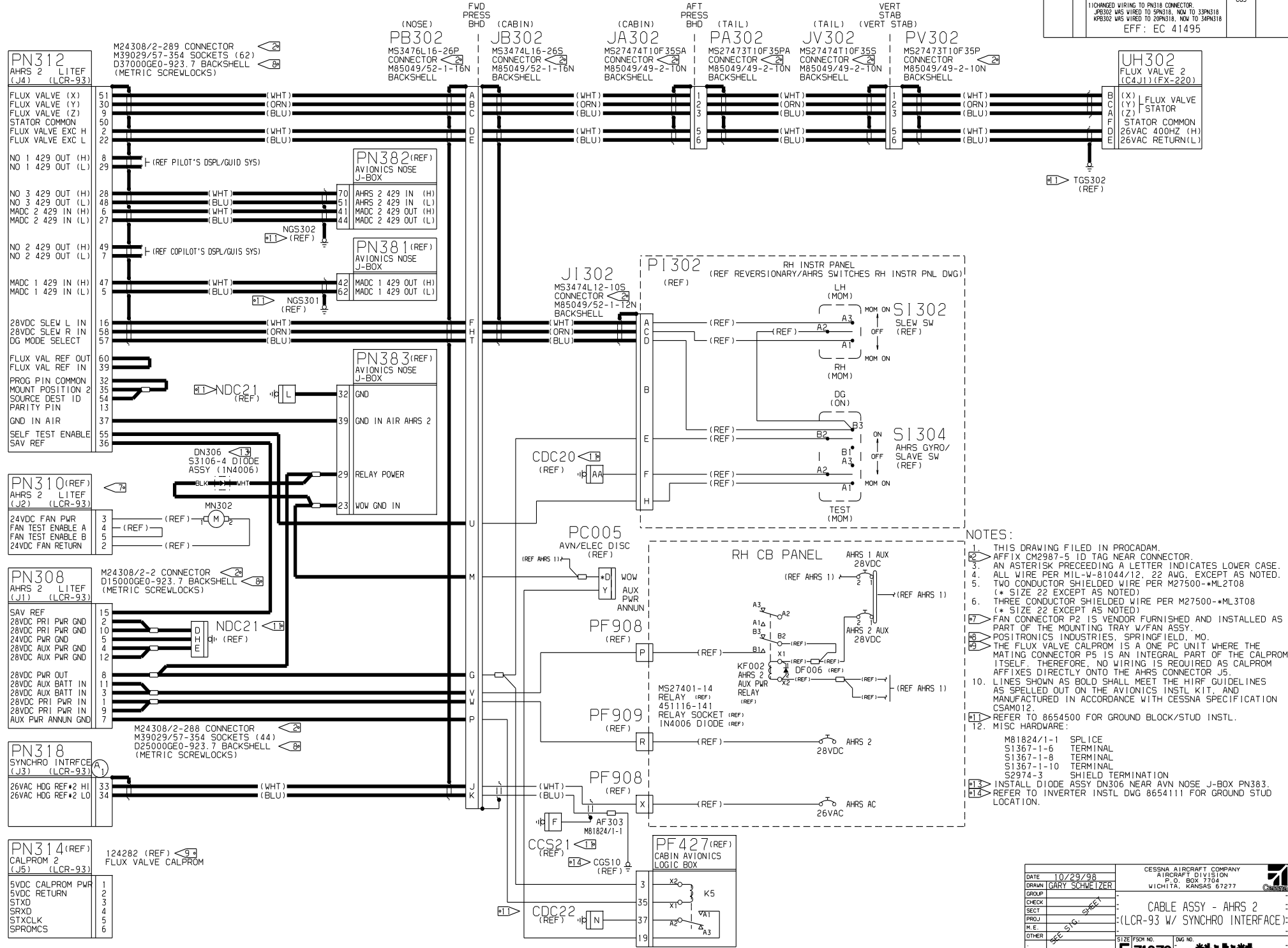


REVISIONS				
SHEET	REV	DESCRIPTION	DATE	APPROVED
A	BY	REVISION:	11/5/98	
1. CHANGED WIRING TO PN318 CONNECTOR			CGS	
2. PN302 WAS WIRED TO SPN318, NOW TO 3PN318				
3. PN303 WAS WIRED TO 20PN318, NOW TO 3PN318				
EFF: EC 41495				



- NOTES:**
- THIS DRAWING FILED IN PROCADAM.
 - AFFIX CM2987-5 TO TAG NEAR CONNECTOR.
 - AN ASTERISK PRECEDING A LETTER INDICATES LOWER CASE.
 - ALL WIRE PER MIL-W-81044/12 22 AWG, EXCEPT AS NOTED.
 - TWO CONDUCTOR SHIELDED WIRE PER M27500-ML2T08 (* SIZE 22 EXCEPT AS NOTED)
 - THREE CONDUCTOR SHIELDED WIRE PER M27500-ML3T08 (* SIZE 22 EXCEPT AS NOTED)
 - FAN CONNECTOR P2 IS VENDOR FURNISHED AND INSTALLED AS PART OF THE MOUNTING TRAY W/FAN ASSY.
 - POSITRONICS INDUSTRIES, SPRINGFIELD, MO.
 - THE FLUX VALVE CALPROM IS A ONE PC UNIT WHERE THE MATING CONNECTOR P5 IS AN INTEGRAL PART OF THE CALPROM ITSELF. THEREFORE, NO WIRING IS REQUIRED AS CALPROM AFFIXES DIRECTLY ONTO THE AHRs CONNECTOR J5.
 - LINES SHOWN AS BOLD SHALL MEET THE HIRF GUIDELINES AS SPELLED OUT ON THE AVIONICS INSTL KIT AND MANUFACTURED IN ACCORDANCE WITH CESSNA SPECIFICATION CSAM012.
 - REFER TO 8654500 FOR GROUND BLOCK/STUD INSTL.
 - MISC HARDWARE:
 - M81824/1-1 SPLICE
 - S1367-1-6 TERMINAL
 - S1367-1-8 TERMINAL
 - S1367-1-10 TERMINAL
 - S2974-3 SHIELD TERMINATION
 - INSTALL DIODE ASSY DN306 NEAR AVN NOSE J-BOX PN383.
 - REFER TO INVERTER INSTL DWG 8654111 FOR GROUND STUD LOCATION.

DATE	10/29/98	CESSNA AIRCRAFT COMPANY
DRAWN	GARY SCHWEITZER	AIRCRAFT DIVISION
GROUP		P. O. BOX 7704
CHECK		WICHITA, KANSAS 67277
OTHER		
GROUP		
CHECK		
SECT		
PROJ		
M.E.		
DATE	10/29/98	CESSNA AIRCRAFT COMPANY
DRAWN	GARY SCHWEITZER	AIRCRAFT DIVISION
GROUP		P. O. BOX 7704
CHECK		WICHITA, KANSAS 67277
OTHER		
GROUP		
CHECK		
SECT		
PROJ		
M.E.		
DATE	10/29/98	CESSNA AIRCRAFT COMPANY
DRAWN	GARY SCHWEITZER	AIRCRAFT DIVISION
GROUP		P. O. BOX 7704
CHECK		WICHITA, KANSAS 67277
OTHER		
GROUP		
CHECK		
SECT		
PROJ		
M.E.		

CABLE ASSY - AHRs 2
(LCR-93 W/ SYNCHRO INTERFACE)

SIZE FSCH NO. DWG NO.
F71379