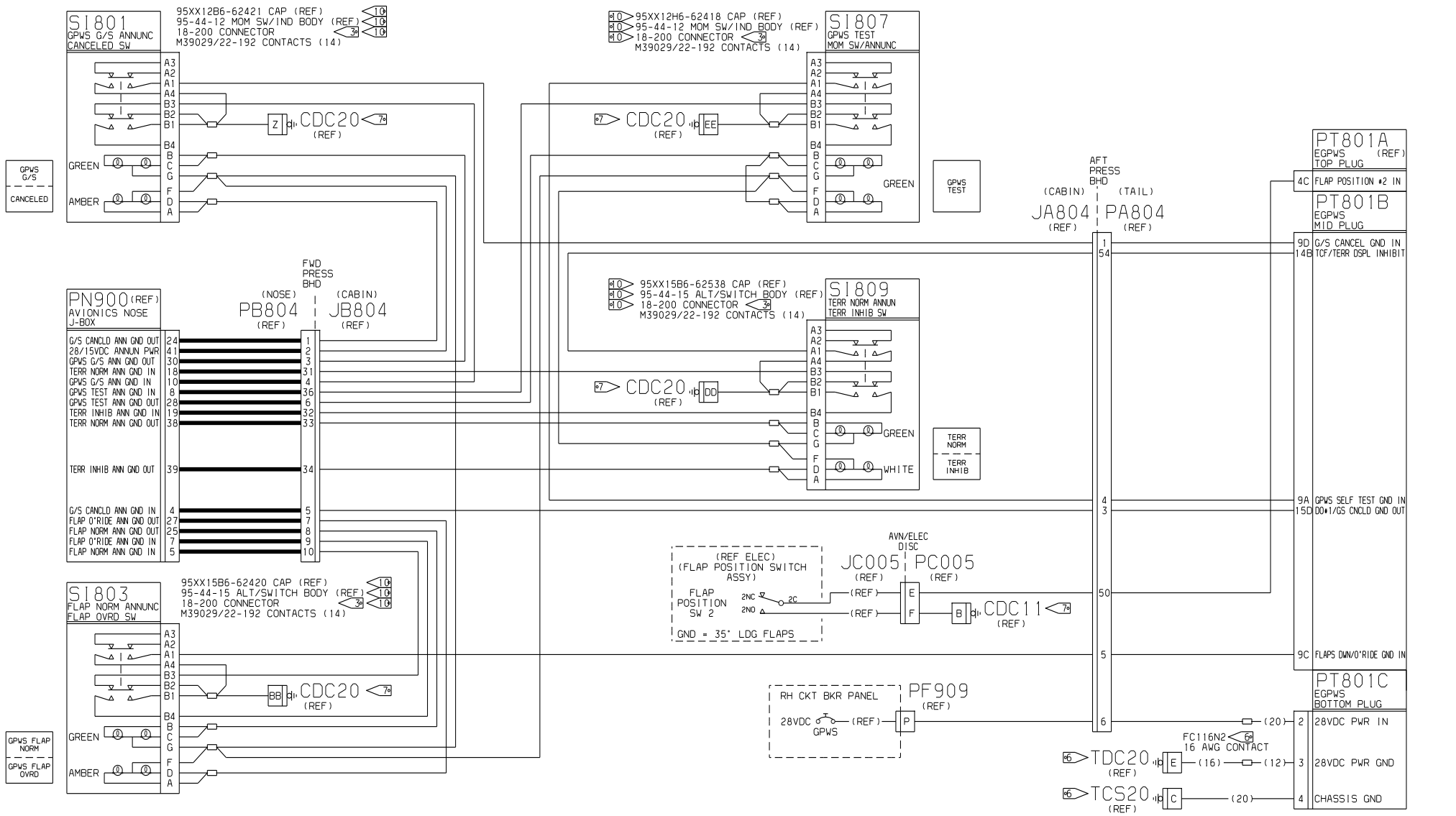


- NOTES:
- THIS DRAWING IS FILED IN PROCADAM.
 - ALL WIRE PER MIL-W-81044/12, 22 AWG, EXCEPT AS NOTED.
 - AFFIX CM2987-5 1D TAG NEAR CONNECTOR
 - TWO CONDUCTOR SHIELDED WIRE PER M27500-XXML2T08
THREE CONDUCTOR SHIELDED WIRE PER M27500-XXML3T08
(XX-22 AWG EXCEPT AS NOTED)
 - S3369-1 IS CESSNA CODE FOR VENDOR P/N NIC66F11B01AA0
CONNECTOR OF AMP INC., HARRISBURG, PA.
 - POSITRONIC INDUSTRIES, INC., SPRINGFIELD, MO.

- REFER TO 8654500 FOR GROUND BLOCK/STUD LOCATION.
- LINES SHOWN AS BOLD SHALL MEET THE HIRF GUIDELINES
AS SPELLED OUT ON THE AVIONICS CABLE KIT.
- ITT CANNON, SANTA ANA, CA
- AEROSPACE OPTICS, FORT WORTH, TX.
- MISC HARDWARE: M81824/1-1 SPLICE
S2974N3 SOLDER SLEEVE M81824/1-3 SPLICE
S2974-3 SHIELD TERMINATION S1367-1-10 TERMINAL

REVISIONS				
SHEET	REV	DESCRIPTION	DATE	APPROVED



DATE	01/21/99	CESSNA AIRCRAFT COMPANY	
DRAWN	FITZPATRICK	AIRCRAFT DIVISION	
GROUP		P.O. BOX 7704	
CHECK		WICHITA, KANSAS 67277	
SECT		CABLE ASSY - EGPWS	
PRD J		W/TCAS 2000, DUAL FMS,	
M. E.		& OBSTACLE DATABASE	
OTHER			
FABRICATE PER	CES260A	SIZE	F71379
PROCESS PER	XXXXXXXXXXXX	DWG NO.	
WIRE TERMINATION PER	CES271E	SCALE	NONE
		PARENT:	8616107
		SHEET	1 OF 3

J1801
205555-2
CONNECTOR
DE44994
BACKSHELL

JA804
MS27474E16F35S
CONNECTOR
M85049/49-2-16N
BACKSHELL

PA804
MS27473E16F35P
CONNECTOR
M85049/49-2-16N
BACKSHELL

FWD PRESS (NOSE) BHD (CABIN)

S3369-1 CONNECTOR

PT801A
EGPWS
TOP PLUG

PN382(REF)
AVIONICS NOSE
J-BOX

MADC 2 429 OUT (H) 47
MADC 2 429 OUT (L) 46
AHRS 2 429 OUT (H) 50
AHRS 2 429 OUT (L) 72
LRN2 429 DATA IN (H) 7
LRN2 429 DATA IN (L) 9

PB804
MS27473E16F35P
CONNECTOR
M85049/49-2-16N
BACKSHELL

JB804
MS27474E16F35S
CONNECTOR
M85049/49-2-16N
BACKSHELL

AVN DISC/
DIAGNOSTIC
INTERFACE

2 (WHT)
3 (BLU)
5 (ORN)

PN368(REF)
DISP/GUID CMPTR
(C190J2A) (IC-600)

EGPWS 429 DATA IN (H) 41
EGPWS 429 DATA IN (L) 42

PN370(REF)
DISP/GUID CMPTR
(C190J2B) (IC-600)

IC 2 FDR 429 OUT (H) 12
IC 2 FDR 429 OUT (L) 25

PN368(REF)
DISP/GUID CMPTR
(C190J2A) (IC-600)

EGPWS SELECT 60

PN367(REF)
DISP/GUID CMPTR
(190J2A) (IC-600)

EGPWS SELECT 60

PN381(REF)
AVIONICS NOSE
J-BOX

MADC 1 429 OUT (H) 47
MADC 1 429 OUT (L) 46
AHRS 1 429 OUT (H) 50
AHRS 1 429 OUT (L) 72
LRN1 429 DATA IN (H) 7
LRN1 429 DATA IN (L) 9

PB803
MS27473E12F35P
CONNECTOR
M85049/49-2-12N
BACKSHELL

JB803
MS27474E12F35S
CONNECTOR
M85049/49-2-12N
BACKSHELL

PI422(REF)
MULTI FUNC DSPL
(131J1) (DU-870)

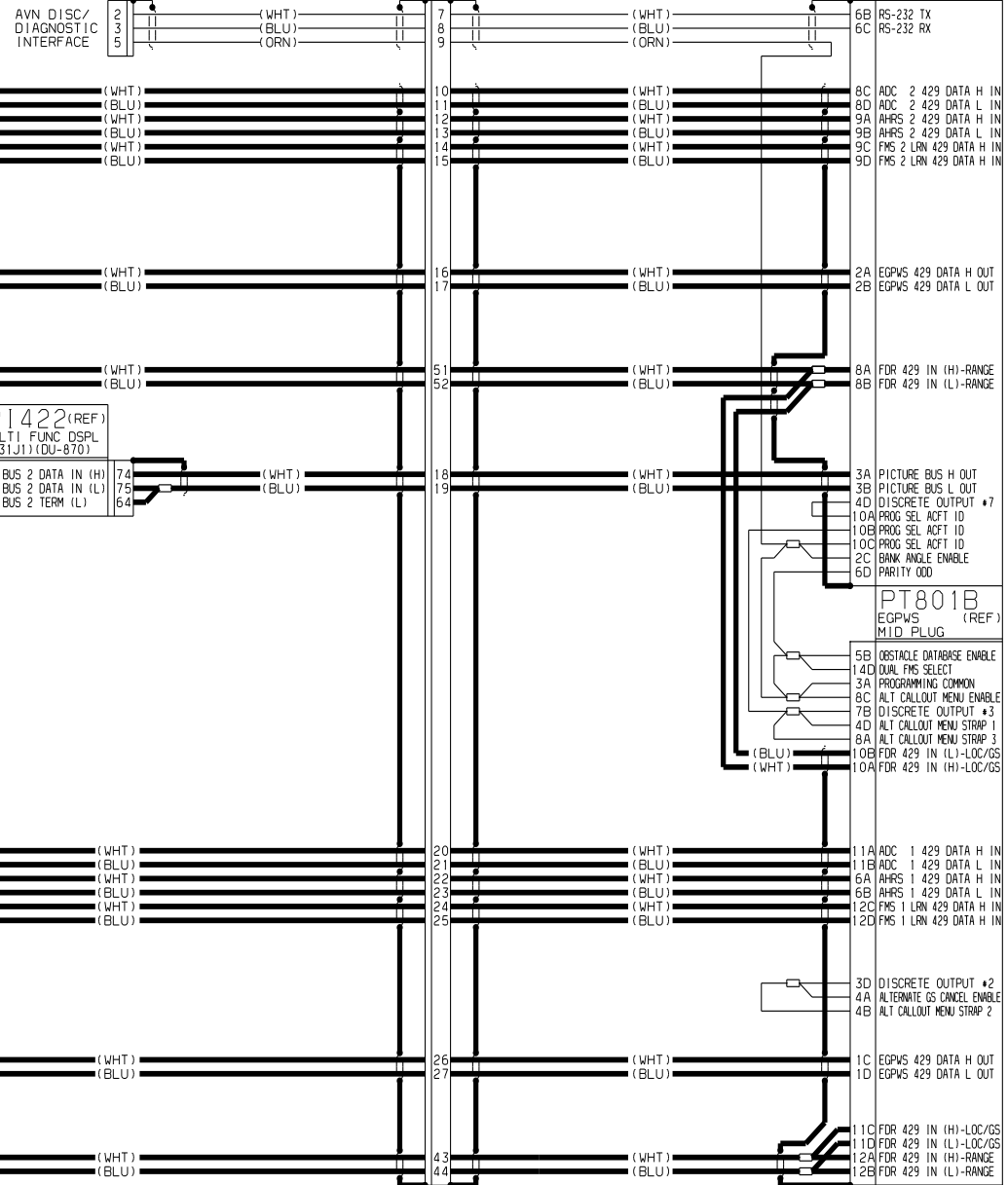
VX BUS 2 DATA IN (H) 74
VX BUS 2 DATA IN (L) 75
VX BUS 2 TERM (L) 64

PN367(REF)
DISP/GUID CMPTR
(190J2A) (IC-600)

EGPWS 429 DATA IN (H) 41
EGPWS 429 DATA IN (L) 42

PN369(REF)
DISP/GUID CMPTR
(190J2B) (IC-600)

IC 1 FDR 429 OUT (H) 12
IC 1 FDR 429 OUT (L) 25



6B RS-232 TX
6C RS-232 RX

8C ADC 2 429 DATA H IN
8D ADC 2 429 DATA L IN
9A AHRS 2 429 DATA H IN
9B AHRS 2 429 DATA L IN
9C FMS 2 LRN 429 DATA H IN
9D FMS 2 LRN 429 DATA H IN

2A EGPWS 429 DATA H OUT
2B EGPWS 429 DATA L OUT

8A FDR 429 IN (H)-RANGE
8B FDR 429 IN (L)-RANGE

3A PICTURE BUS H OUT
3B PICTURE BUS L OUT
4D DISCRETE OUTPUT #7
10A PROG SEL ACT1 ID
10B PROG SEL ACT1 ID
10C PROG SEL ACT1 ID
2C BANK ANGLE ENABLE
6D PARITY ODD

PT801B
EGPWS
MID PLUG

5B OBSTACLE DATABASE ENABLE
14D DUAL FMS SELECT
3A PROGRAMMING COMMON
8C ALT CALLOUT MENU ENABLE
7B DISCRETE OUTPUT #3
4D ALT CALLOUT MENU STRAP 1
8A ALT CALLOUT MENU STRAP 3
10B FDR 429 IN (L)-LOC/GS
10A FDR 429 IN (H)-LOC/GS

11A ADC 1 429 DATA H IN
11B ADC 1 429 DATA L IN
6A AHRS 1 429 DATA H IN
6B AHRS 1 429 DATA L IN
12C FMS 1 LRN 429 DATA H IN
12D FMS 1 LRN 429 DATA H IN

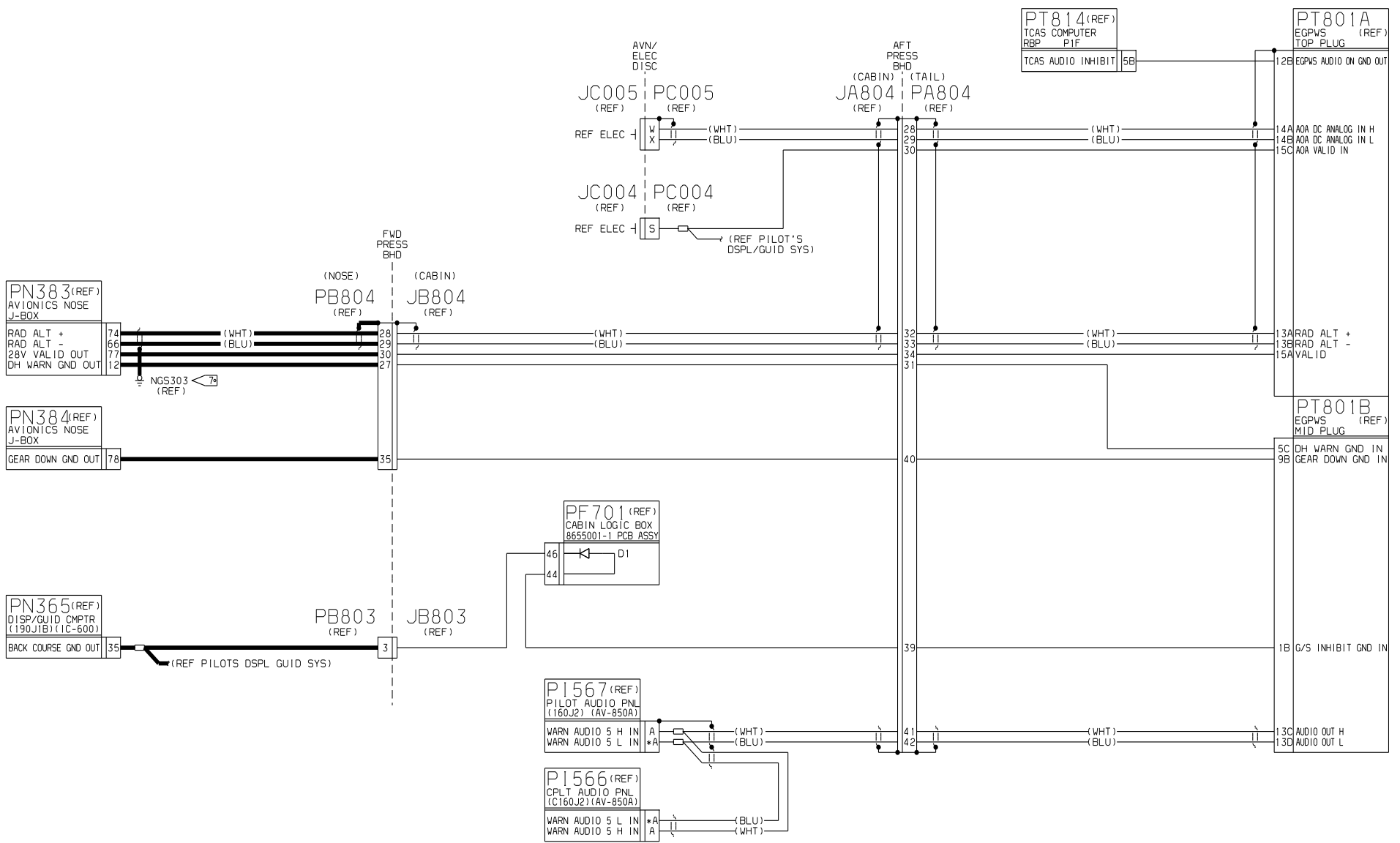
3D DISCRETE OUTPUT #2
4A ALTERNATE GS CANCEL ENABLE
4B ALT CALLOUT MENU STRAP 2

1C EGPWS 429 DATA H OUT
1D EGPWS 429 DATA L OUT

11C FDR 429 IN (H)-LOC/GS
11D FDR 429 IN (L)-LOC/GS
12A FDR 429 IN (H)-RANGE
12B FDR 429 IN (L)-RANGE

DATE	01/21/99	CESSNA AIRCRAFT COMPANY AIRCRAFT DIVISION P.O. BOX 7704 WICHITA, KANSAS 67277
GROUP	FITZPATRICK	
CHECK		CABLE ASSY - EGPWS & OBSTACLE DATABASE
SECT		
PROJ		SIZE FSON NO. DWG NO.
M.E.		F71379
OTHER		SCALE NONE
FABRICATE PER CES2604		SHEET 2 OF 3
PROCESS PER XXXXXXXXXXXXX		CES FORM 1872
WIRE TERMINATION PER CES211		

REVISIONS				
SHEET	REV	DESCRIPTION	DATE	APPROVED



DATE	01/21/99	CESSNA AIRCRAFT COMPANY AIRCRAFT DIVISION P.O. BOX 7704 WICHITA, KANSAS 67277	
DRAWN	FITZPATRICK		
GROUP		CABLE ASSY - EGPWS w/TCAS 2000, DUAL FMS, & OBSTACLE DATABASE	
CHECK		SIZE	F71379
SECT		DWG NO.	
PROJ		FABRICATE PER_CES260A PROCESS PER_XXXXXXX WIRE TERMINATION PER_CES271B	
M.E.		SCALE	NONE
OTHER		SHEET 3 OF 3	