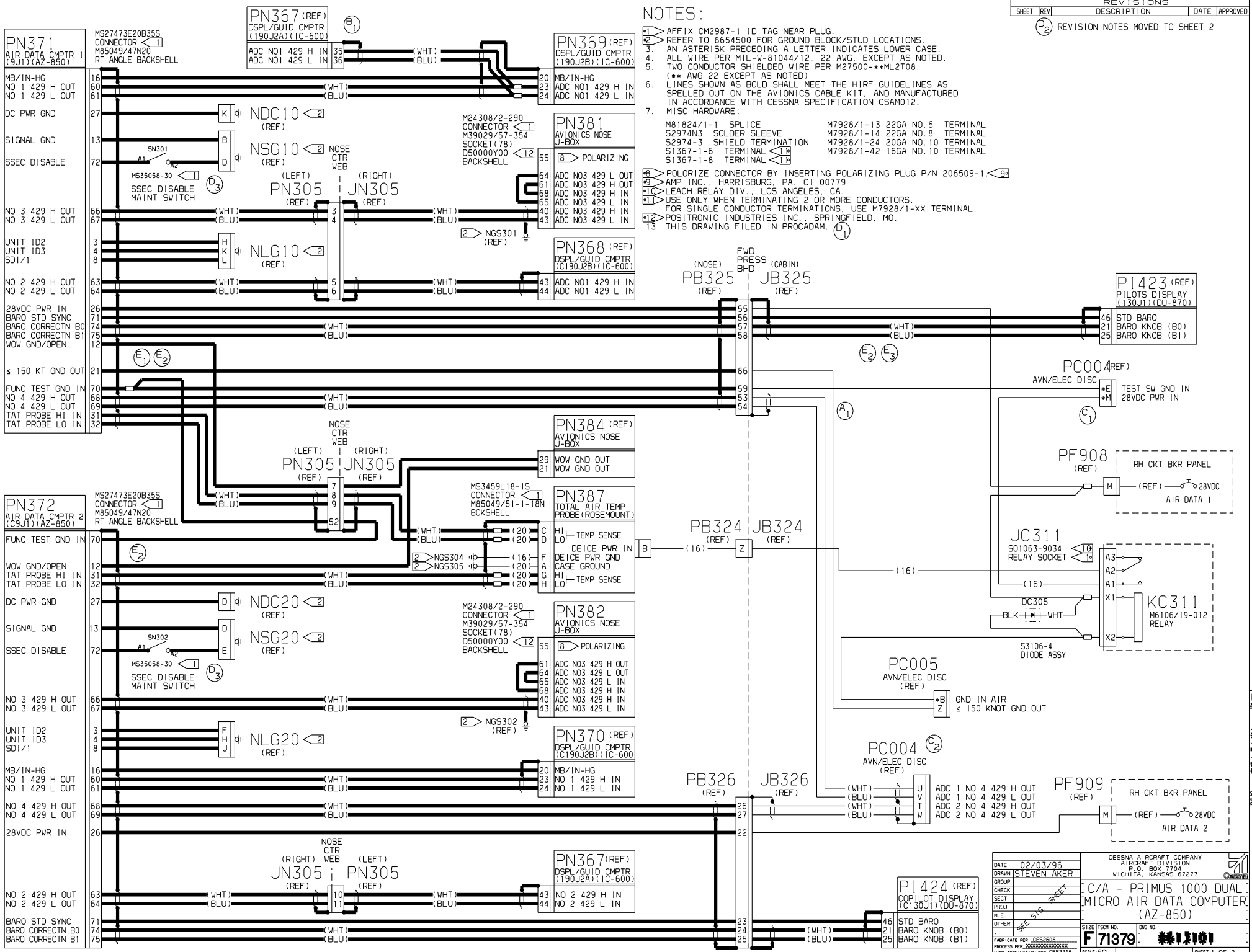


① REVISION NOTES MOVED TO SHEET 2

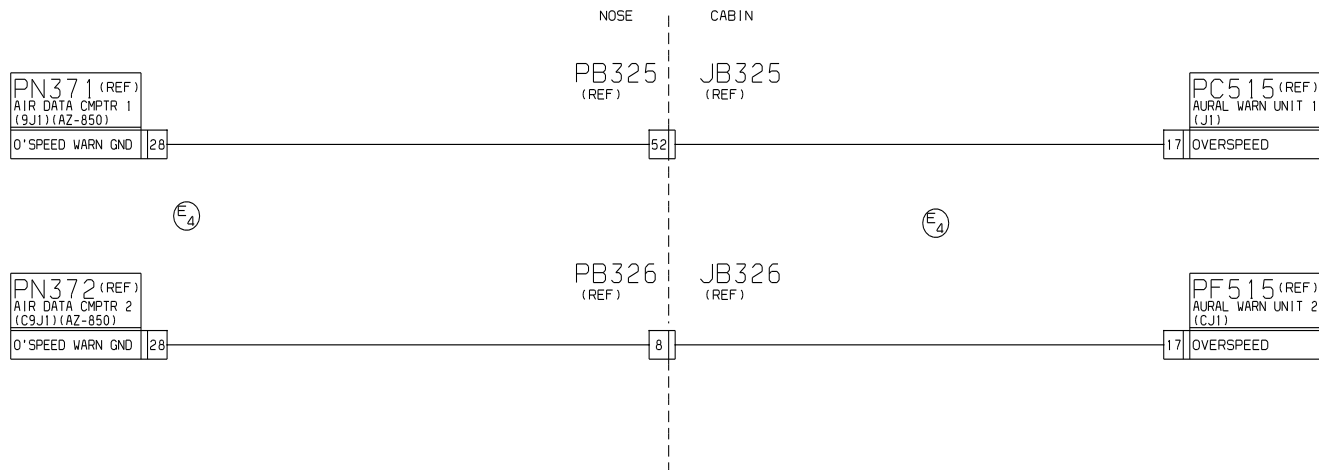
NOTES:

- AFFIX CM2987-1 ID TAG NEAR PLUG.
- REFER TO 8654500 FOR GROUND BLOCK/STUD LOCATIONS.
- AN ASTERISK PRECEDING A LETTER INDICATES LOWER CASE.
- ALL WIRE PER MIL-W-81044/12, 22 AWG, EXCEPT AS NOTED.
- TWO CONDUCTOR SHIELDED WIRE PER M27500-\*\*ML2T08. (\*\* AWG 22 EXCEPT AS NOTED)
- LINES SHOWN AS BOLD SHALL MEET THE HIRF GUIDELINES AS SPELLED OUT ON THE AVIONICS CABLE KIT, AND MANUFACTURED IN ACCORDANCE WITH CESSNA SPECIFICATION CSAM012.
- MISC HARDWARE:
  - M81824/1-1 SPLICE
  - S2974N3 SOLDER SLEEVE
  - S2974-3 SHIELD TERMINATION
  - S1367-1-6 TERMINAL
  - S1367-1-8 TERMINAL
  - M7928/1-13 22GA NO. 6 TERMINAL
  - M7928/1-14 22GA NO. 8 TERMINAL
  - M7928/1-24 20GA NO. 10 TERMINAL
  - M7928/1-42 16GA NO. 10 TERMINAL
- POLARIZE CONNECTOR BY INSERTING POLARIZING PLUG P/N 206509-1.
  - AMP INC., HARRISBURG, PA, CI 00779
  - LEACH RELAY DIV., LOS ANGELES, CA
  - USE ONLY WHEN TERMINATING 2 OR MORE CONDUCTORS.
  - FOR SINGLE CONDUCTOR TERMINATIONS, USE M7928/1-XX TERMINAL.
  - POSITRONIC INDUSTRIES INC., SPRINGFIELD, MO.
- THIS DRAWING FILED IN PROCADAM. ①



|       |                |  |              |
|-------|----------------|--|--------------|
| DATE  | 02/03/96       | CESSNA AIRCRAFT COMPANY<br>AIRCRAFT DIVISION<br>P.O. BOX 7700<br>WICHITA, KANSAS 67277 |              |
| DRAWN | STEVEN AKER    |  |              |
| CHECK |                | C/A - PRIMUS 1000 DUAL<br>MICRO AIR DATA COMPUTER<br>(AZ-850)                          |              |
| SECT  |                | SIZE: F50M NO. <b>F 71379</b> (Dwg. No.  |              |
| PROJ. |                | FABRICATE PER CESSNA<br>PROCESS PER XXXXXXXXXX<br>WIRE TERMINATION PER CES2716         |              |
| M.E.  |                | SCALE: SCL   | SHEET 1 OF 2 |
| OTHER | SEE S101 SHEET | CES FORM 1872  | ②            |

EC34158



| REVISIONS |     |   |                 |          |
|-----------|-----|---|-----------------|----------|
| SHEET     | REV | DESCRIPTION   | DATE            | APPROVED |
| 1         | A   | BY REVISION:<br>1) ADDED WIRE: 21PN371 - 86PB325<br>86JB325 - ZPC005<br>EFF: EC34158 WO XL-0150   | 04/09/96<br>SEA |          |
| 1         | B   | BY REVISION:<br>1) ADDED WIRES:<br>23/24PN369 - 35/36PN367<br>EFF: EC34158 WO XL-0528   | 07/29/96<br>SEA |          |
| 1         | C   | BY REVISION:<br>1) CHANGED WIRES:<br>A1JC311 -> YPC004 TO A1JC311 -> MPC004<br>2) CHANGED WIRES:<br>53JB325 -> WPC005 TO 53JB325 -> WPC004<br>54JB325 -> WPC005 TO 54JB325 -> WPC004<br>26JB326 -> WPC005 TO 26JB326 -> WPC004<br>27JB326 -> WPC005 TO 27JB326 -> WPC004<br>EFF: EC34158 WO XL-0681   | 09/13/96<br>CRV |          |
| 1         | D   | BY REVISION:<br>1) ADDED NOTE 13. 8613101 WAS FILED IN CADAM; NOW FILED IN PROCADAM.<br>2) ADDED SHEET 2 & MOVED REVISION NOTES TO SHEET 2.<br>3) REPLACED SN301 & SN302 SWITCHES. WAS: MS35058-22; NOW: MS35058-30<br>EFF: EC34158 WO XL-2041  | 12/11/97<br>COS |          |
| 1         | E   | BY REVISION:<br>1) MOVED THE FOLLOWING WIRE TO SHT 2:<br>28PN371 - 52PB325<br>2) DELETED THE FOLLOWING WIRES:<br>52JB325 - 2UC301, 28PN371 - 51PN305<br>51JN305 - 28PN372<br>3) DELETED UC301 WARNING HORN.<br>4) ADDED CONNECTORS PN371, PN372, PC515, PF515, J/PB325, J/PB326, & ASSOCIATED WIRING AS FOLLOWS:<br>28PN371 - 52PB325, 52JB325 - 17PC515<br>28PN372 - 8PB326, 8JB326 - 17PF515<br>EFF: EC 34158; WO XL-2086 | 01/19/98<br>COS |          |

|                      |                |                         |
|----------------------|----------------|-------------------------|
| DATE                 | 12/11/97       | CESSNA AIRCRAFT COMPANY |
| DRAWN                | GARY SCHWEIZER | AIRCRAFT DIVISION       |
| GROUP                |                | P. O. BOX 7704          |
| CHECK                |                | WICHITA, KANSAS 67277   |
| SECT                 |                |                         |
| PROJ                 |                |                         |
| M. E.                |                |                         |
| OTHER                |                |                         |
| SEE 516 SHEET        |                |                         |
| FABRICATE PER        | CES2206        | SIZE F50M NO.           |
| PROCESS PER          | XXXXXXXXXXXX   | ENG NO.                 |
| WIRE TERMINATION PER | CES2716        | SCALE: SCL              |
|                      |                | SCALE: SCL              |

EC34158  
 1  
 2  
 3  
 4  
 5  
 6  
 7  
 8  
 9  
 10  
 11  
 12  
 13  
 14  
 15  
 16  
 17  
 18  
 19  
 20  
 21  
 22  
 23  
 24  
 25  
 26  
 27  
 28  
 29  
 30  
 31  
 32  
 33  
 34  
 35  
 36  
 37  
 38  
 39  
 40  
 41  
 42  
 43  
 44  
 45  
 46  
 47  
 48  
 49  
 50  
 51  
 52  
 53  
 54  
 55  
 56  
 57  
 58  
 59  
 60  
 61  
 62  
 63  
 64  
 65  
 66  
 67  
 68  
 69  
 70  
 71  
 72  
 73  
 74  
 75  
 76  
 77  
 78  
 79  
 80  
 81  
 82  
 83  
 84  
 85  
 86  
 87  
 88  
 89  
 90  
 91  
 92  
 93  
 94  
 95  
 96  
 97  
 98  
 99  
 100