

NOTES:

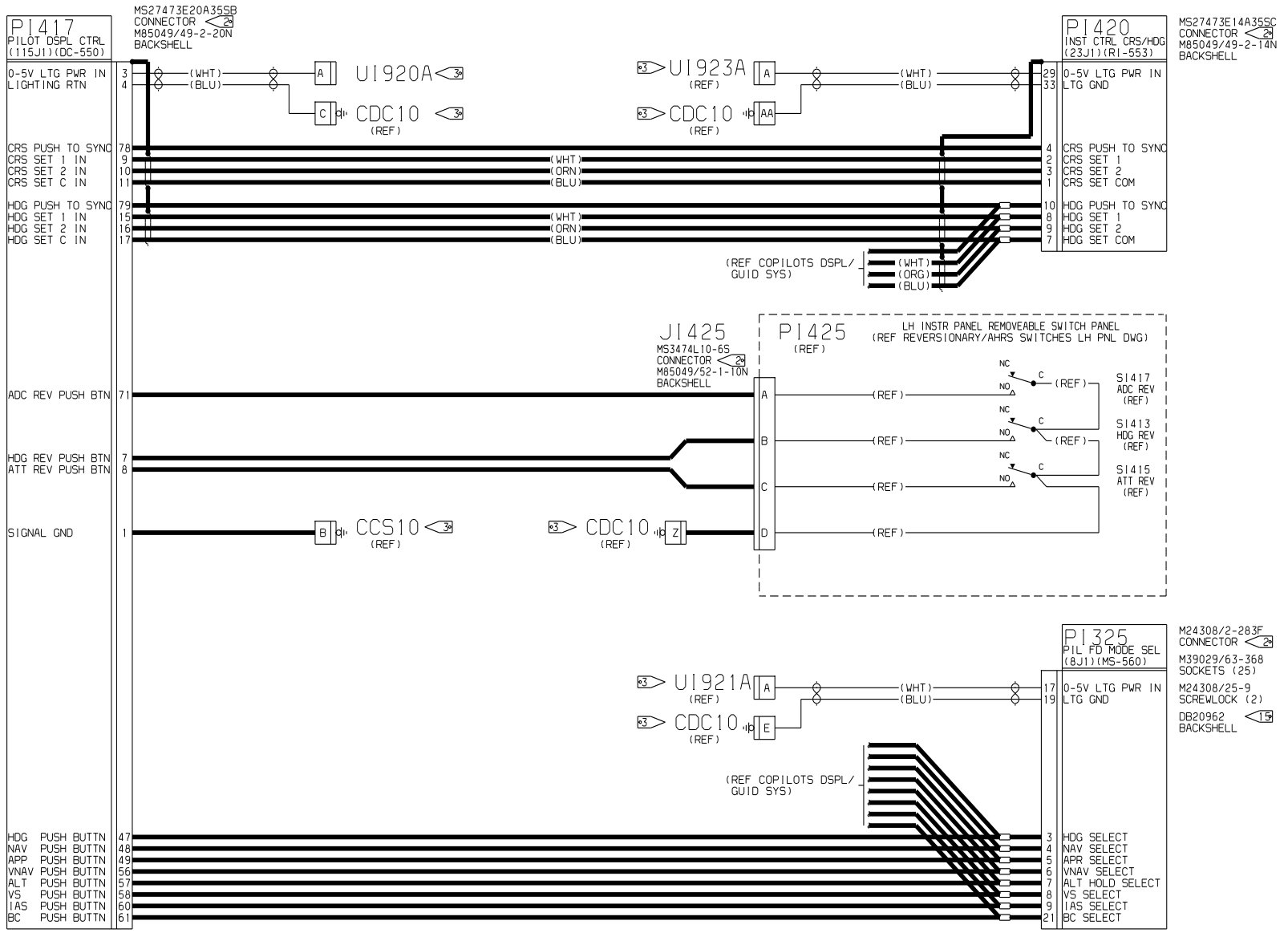
REVISIONS				
SHEET	REV	DESCRIPTION	DATE	APPROVED

- ALL WIRE PER MIL-W-81044/12, 22 AWG, EXCEPT AS NOTED.
- AFFIX CM2987-5 ID TAG NEAR PLUG.
- REFER TO 8654500 FOR LIGHTING AND GROUND BLOCK/STUD LOCATIONS.
- FOR 20 AWG WIRE, USE TRISTAR PIN P/N 219-2220-079 WITH EXTRACTION TOOL: M81969/14-01.
- AEROSPACE OPTICS INC., FT. WORTH, TEXAS, CI 32245.
- AMP INC., HARRISBURG, PA., CI 00779.
- AN ASTERISK PRECEDING A LETTER INDICATES LOWER CASE.
- THE POLARIZING POSTS ARE INCLUDED WITH THE CONNECTOR AS LOOSE EQUIPMENT. THEY ARE TO BE INSTALLED IN THE CONNECTOR DURING ASSEMBLY. THE POLARIZATION POSITION IS TO BE THE SAME AS THE MATING CONNECTOR ON THE ASSOCIATED VENDOR BOX.

- POSITRONIC IND INC., SPRINGFIELD, MO. CI 28198
- MASON ELECTRIC CO INC., GLENDALE, CA.
- OME ELECTRONICS, WICHITA, KS.
- SINGLE CONDUCTOR SHIELDED WIRE PER M27500-**ML1T08.
TWO CONDUCTOR SHIELDED WIRE PER M27500-**ML2T08.
THREE CONDUCTOR SHIELDED WIRE PER M27500-**ML3T08.
TWISTED PAIR PER M27500-XXML2U00
(* AWG 22 EXCEPT AS NOTED)
- MISC HARDWARE:

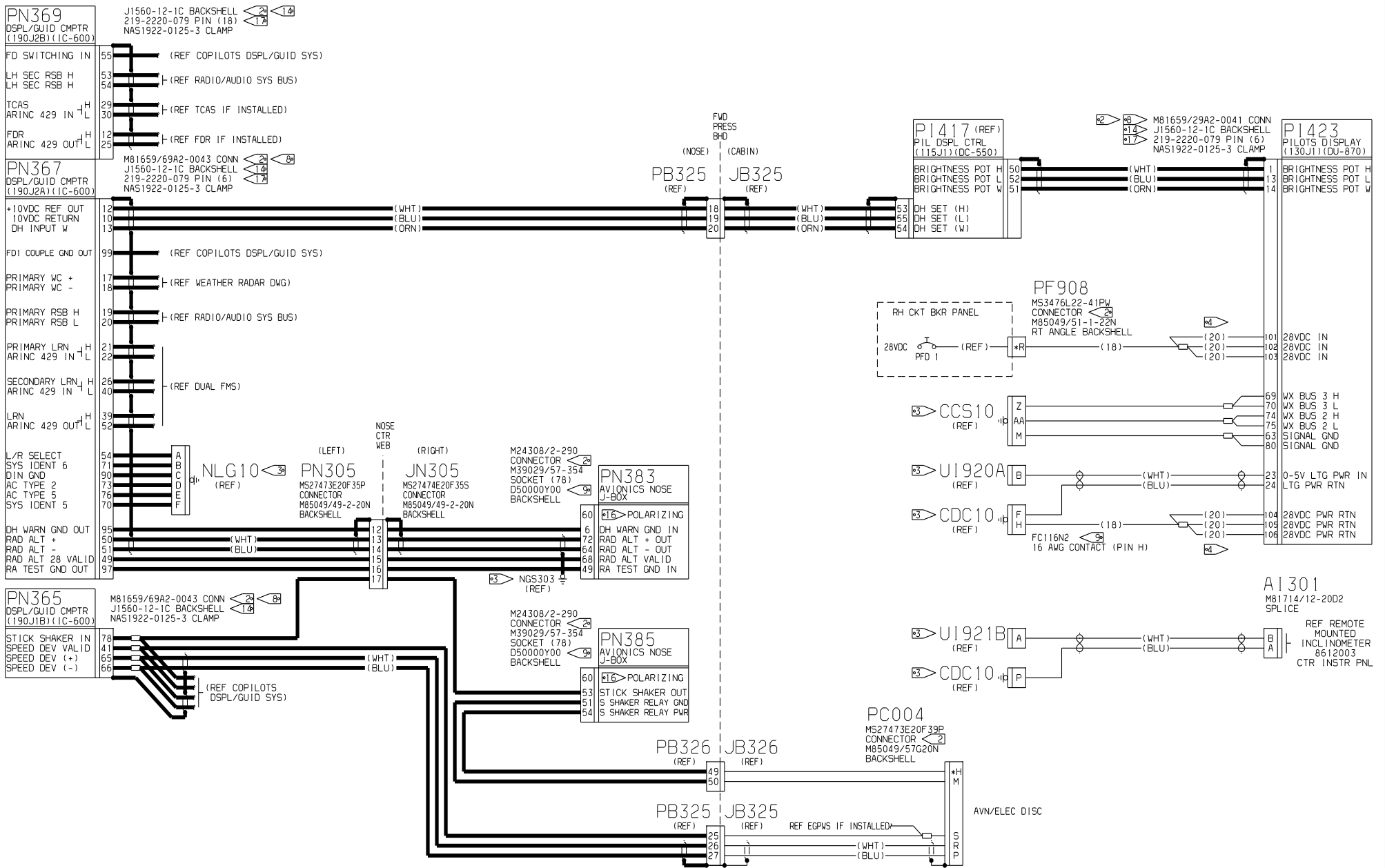
S2974N2	SOLDER SLEEVE	M81824/1-1	SPLICE
S2974N3	SOLDER SLEEVE	M81824/1-2	SPLICE
S2974-2	SHIELD TERMINATION	D436-38	SPLICE
S2974-3	SHIELD TERMINATION	S1367-1-6	TERMINAL
		S1367-1-8	TERMINAL
		S1367-1-10	TERMINAL

- SUNBANK ELECTRONICS INC., PASO ROBLES, CA.
- ITT CANNON, SANTA ANA, CALIF.
- POLARIZE CONNECTOR BY INSERTING POLARIZING PLUG P/N 206509-1.
- TRI-STAR ELECTRONICS INC., VENICE, CALIF.
- LINES SHOWN AS BOLD SHALL MEET THE HIRF GUIDELINES AS SPELLED OUT ON THE AVIONICS CABLE KIT, AND MANUFACTURED IN ACCORDANCE WITH CESSNA SPECIFICATION CSAM012.
- CAP & STOW WIRES AT IC-600 CONNECTOR FOR FUTURE USE IF NECESSARY.
- THIS DRAWING FILED IN PROCADAM.



DATE	09/10/98	CESNA AIRCRAFT COMPANY
DRAWN	ANDY SEATON	AIRCRAFT DIVISION
GROUP		P. O. BOX 3704
CHECK		WICHITA, KANSAS 67277
SECT		
PROJ		
M.E.		
OTHER		
FABRICATE PER CES2200		C/A - PRIMUS 1000 PILOTS DISPLAY & GUIDANCE SYSTEM
PROCESS PER XXXXXXXXXX		
WIRE TERMINATION PER CES2710		
SIZE	F 71379	SCALE: SCL PARENT 861210
DWG NO.		SHEET 1 OF 6

EC41203



DATE	09/10/98	CESSNA AIRCRAFT COMPANY AIRCRAFT DIVISION P. O. BOX 7704 WICHITA, KANSAS 67277	
DRAWN	ANDY SEATON		
GROUP			
CHECK			
SECT			
PROJ		C/A - PRIMUS 1000 PILOTS DISPLAY & GUIDANCE SYSTEM	
M. E.			
OTHER			
FABRICATE PER	CESSNA	SIZE FROM NO.	DWG NO.
PROCESS PER	XXXXXXXXXXXX	F 71379	8612110
WIRE TERMINATION PER	CESS2716	SCALE: SCL	PARENT 8612110 SHEET 2 OF 6

EC41203

PN367 (REF)
DSPL/GUID CMPTR
(190J2A)(IC-600)

PN311 (REF)
AHRS 1 (J4)
LCR-93 LITEF

PRI ATT/HDG IN
ARINC 429 IN L

H_NO 1 ATT/HDG OUT
L ARINC 429 (100K2)

PRI ATT/HDG IN
ARINC 429 IN H

NOSE CTR WEB
(LEFT) (RIGHT)
PN305 (REF) JN305 (REF)

PN312 (REF)
AHRS 2 (J4)
LCR-93 LITEF

SEC ATT/HDG IN
ARINC 429 IN L

H_NO 2 ATT/HDG OUT
L ARINC 429 (100K2)

IC600 VALID

BANK ANN OUT

PN369 (REF)
DSPL/GUID CMPTR
(190J2B)(IC-600)

+15VDC REF OUT
-15VDC REF OUT
AP ENG SEL IN
YD SEL ENG IN
AP ENG ANN OUT
YD ENG ANN OUT
TRIM UP ANN OUT
TRIM DN ANN OUT
PITCH WHEEL IN+
PITCH WHEEL IN-
BANK IN
TURN KNOB INPUT

TURN KNOB OD
SERVO +28VDC
SERVO +28VDC
SERVO +28VDC
SERVO +28VDC

PN367 (REF)
DSPL/GUID CMPTR
(190J2A)(IC-600)

DGC SIGNAL GND
DGC SIGNAL GND
DGC DC PWR GND
DGC DC PWR GND
DGC DC PWR GND

CPU LAMP RTN

+28VDC IN
+28VDC IN
+28VDC IN

ICB +
ICB -
RS-232 TX
RS-232 RX
RS-232 GND

DC/SG BUS H
DC/SG BUS L

PN900 (REF)
AVIONICS NOSE
J-BOX
ANN BRT/DIM PWR

(NOSE)
PB326 (REF)

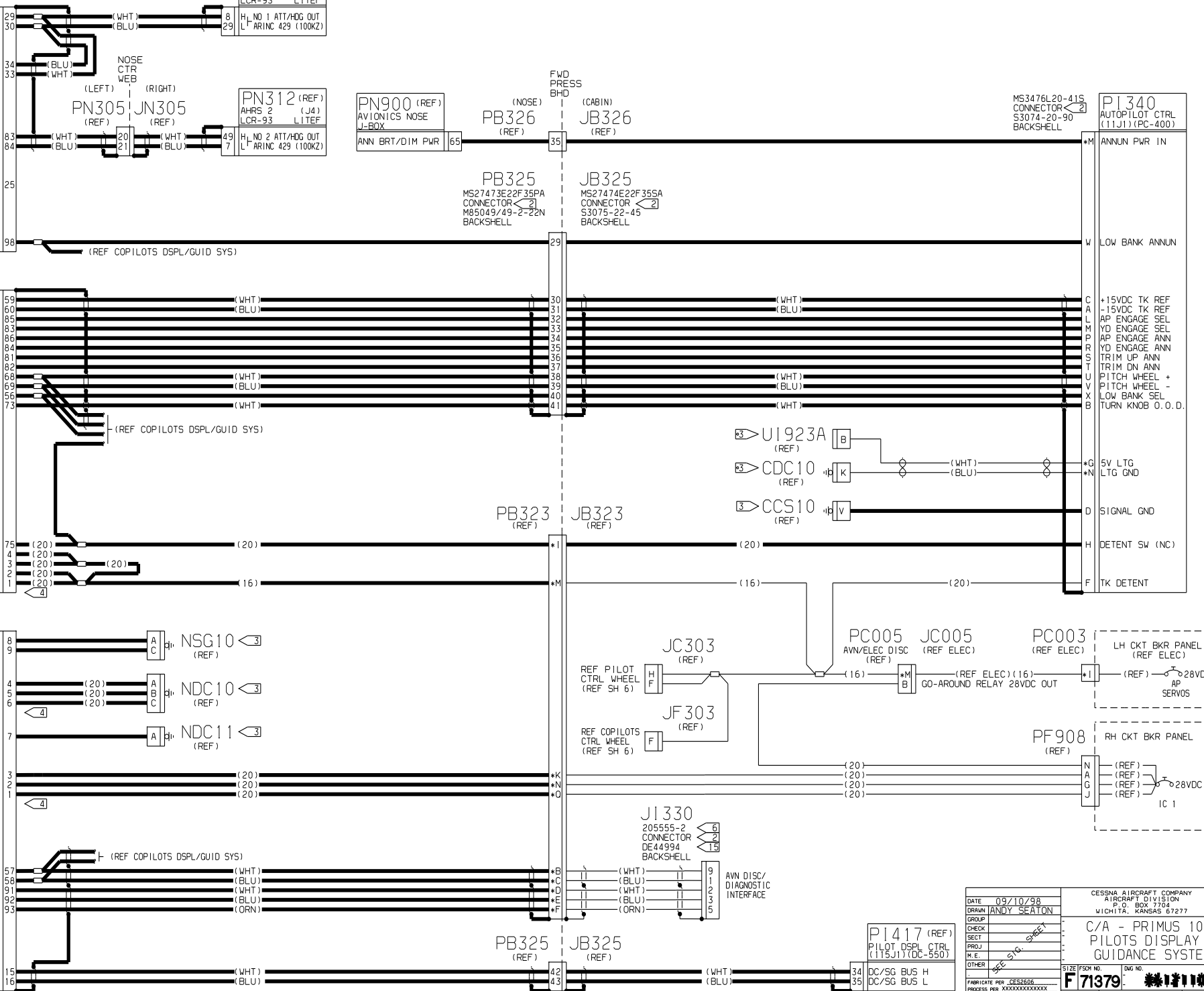
(CABIN)
JB326 (REF)

PB325
MS27473E22F 35PA
CONNECTOR (2)
M85049/49-2-22N
BACKSHELL

JB325
MS27474E22F 35SA
CONNECTOR (2)
S3075-22-45
BACKSHELL

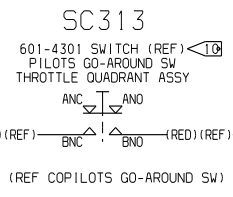
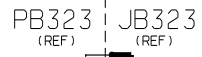
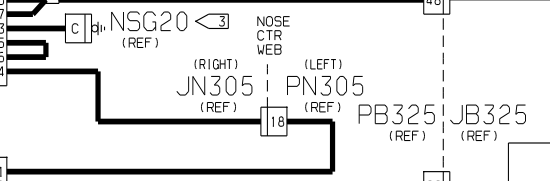
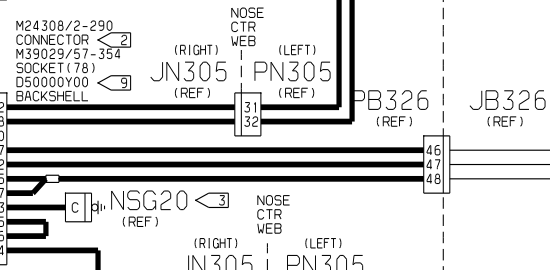
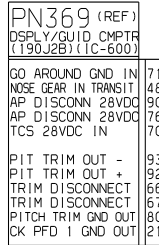
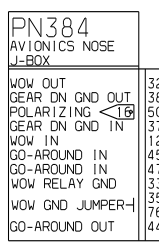
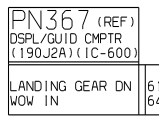
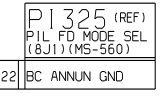
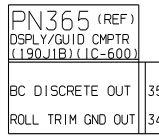
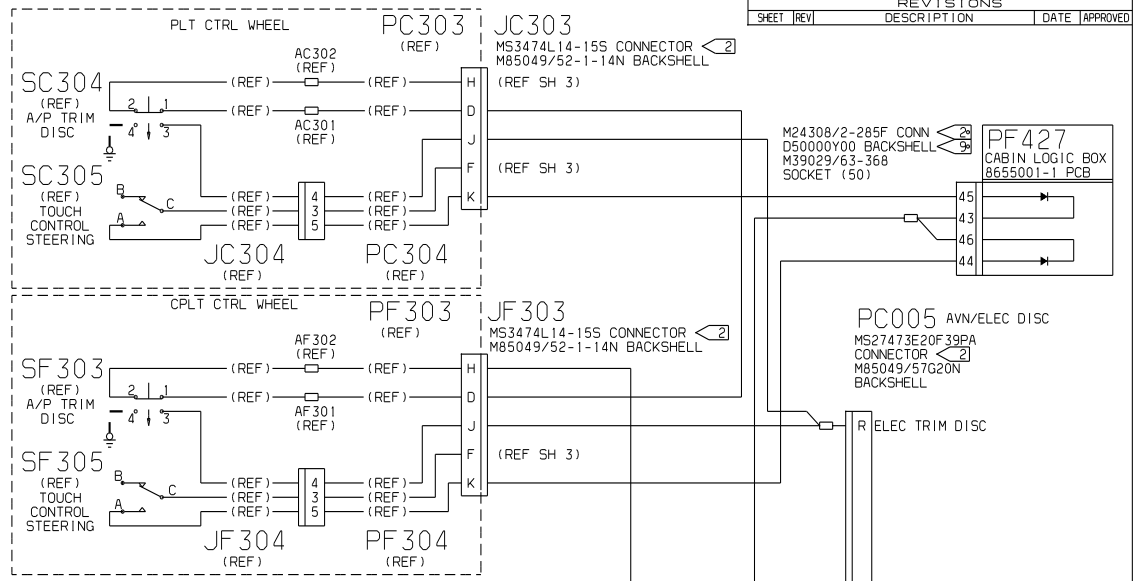
MS3476L20-41S
CONNECTOR (2)
S3074-20-90
BACKSHELL

PI340
AUTOPILOT CTRL
(11J1)(IC-400)



DATE	09/10/98	CESSNA AIRCRAFT COMPANY AIRCRAFT DIVISION P.O. BOX 7704 WICHITA, KANSAS 67277
DRAWN	ANDY SEATON	
CHECKED		C/A - PRIMUS 1000 PILOTS DISPLAY & GUIDANCE SYSTEM
GROUP		
SECT		SIZE FSN NO. Dwg. NO. F 71379 861210
PROJ		
M.E.		SCALE: SCL PARENT SHEET 3 OF 6
OTHER		
FABRICATE PER CESSNA PROCESS PER XXXXXXXXXX WIRE TERMINATION PER CES2716		CEC FORM 1872

EC41203



*P AP ROLL MIS-TRIM ANNUN GND OUT

A GO AROUND GROUND OUT

U LANDING GEAR DOWN GND
 *C WOW GROUND IN
 C GO-AROUND GND IN

*A AP ENGAGE CLUTCH EXCITE

P PULSE TRIM DOWN
 J PULSE TRIM UP
 L TRIM DISCONNECT
 V TRIM DISCONNECT
 *N AP PITCH MIS-TRIM ANNUN GND OUT
 *K CK PFD 1 ANNUN GND OUT

DATE	09/10/98
DRN	ANDY SEATON
GROUP	
CHECK	
SECT	
PROJ	
M. E.	
OTHER	

CESSNA AIRCRAFT COMPANY AIRCRAFT DIVISION P.O. BOX 7704 WICHITA, KANSAS 67277	
C/A - PRIMUS 1000 PILOTS DISPLAY & GUIDANCE SYSTEM	
SIZE	FSN NO. DWG NO.
F71379	1000-1000-1000
SCALE: SCL [PARENT 861210] SHEET 6 OF 6	
CES FORM 1872	

(REF SHEET 4) W

1
5
6
8
9
10
11
12
13
14
15
16
17
18
19
20
21
22
23
24
25
26
27
28
29
30
31
32
33
34
35
36
37
38
39
40
41
42
43
44
45
46
47
48
49
50
51
52
53
54
55
56
57
58
59
60
61
62
63
64
65
66
67
68
69
70
71
72
73
74
75
76
77
78
79
80
81
82
83
84
85
86
87
88
89
90
91
92
93
94
95
96
97
98
99
100