

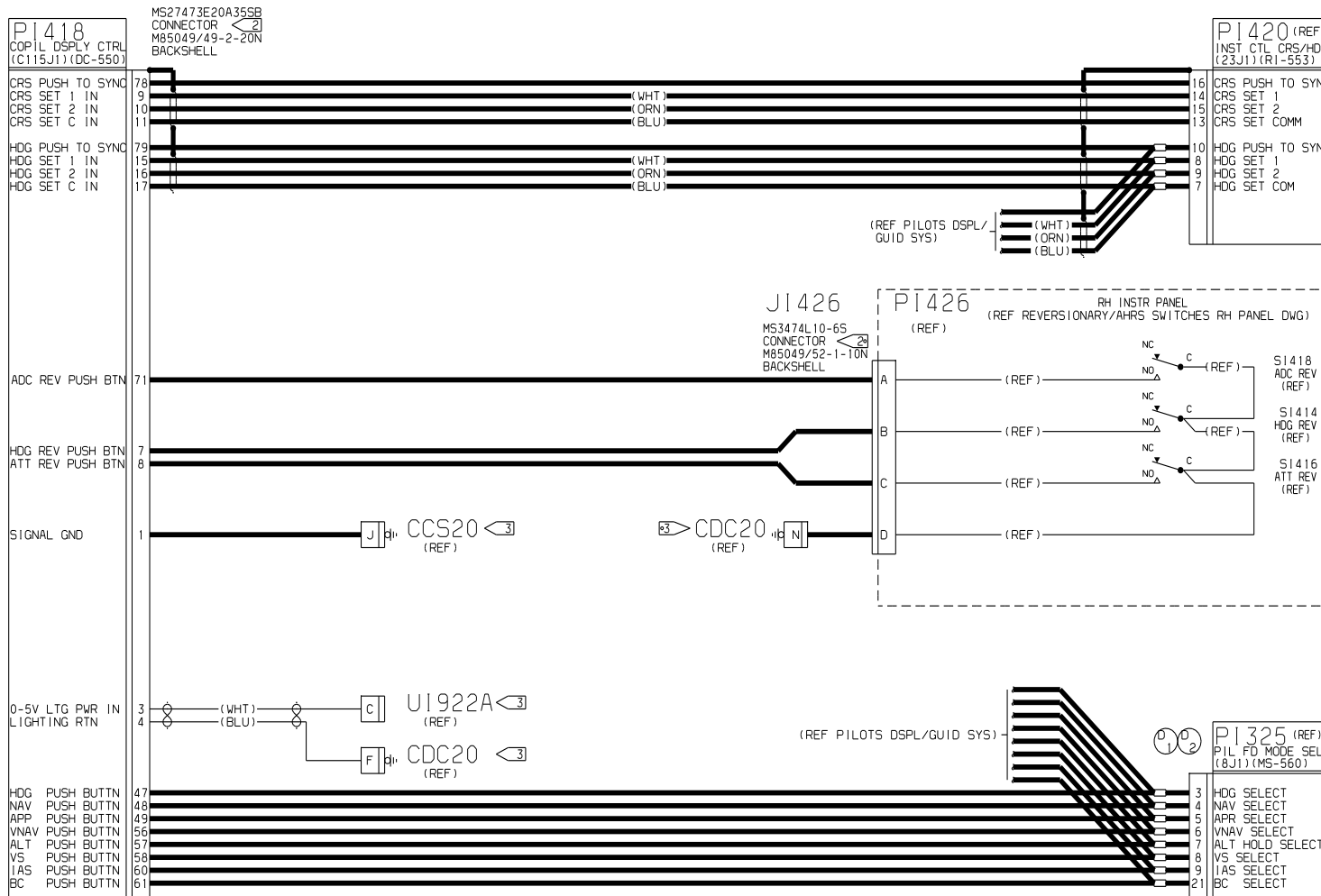
NOTES:

- ALL WIRE PER MIL-W-81044/12, 22 AWG, EXCEPT AS NOTED.
- AFFIX CM2987-5 ID TAG NEAR PLUG.
- REFER TO 8654500 FOR LIGHTING AND GROUND BLOCK/STUD LOCATIONS.
- TRI-STAR ELECTRONICS INC., PASO ROBLES, CA.
- AEROSPACE OPTICS INC., FT. WORTH, TX., CI 32245.
- AMP INC., HARRISBURG, PA., CI 32245.
- AN ASTERISK PRECEDING A LETTER INDICATES LOWER CASE.
- THE POLARIZING POSTS ARE INCLUDED WITH THE CONNECTOR AS LOOSE EQUIPMENT. THEY ARE TO BE INSTALLED IN THE CONNECTOR DURING ASSEMBLY. THE POLARIZATION POSITION IS TO BE THE SAME AS THE MATING CONNECTOR ON THE ASSOCIATED VENDOR BOX.

- POSITRONIC IND INC., SPRINGFIELD, MO., CI 28198
- MASON ELECTRIC CO INC., GLENDALE, CA.
- TWO CONDUCTOR SHIELDED WIRE PER M27500-\*\*ML2T08. THREE CONDUCTOR SHIELDED WIRE PER M27500-\*\*ML3T08. TWISTED PAIR PER M27500-XXML2U00 (\*\* AWG 22 EXCEPT AS NOTED)
- MISC HARDWARE:
  - M81824/1-1 SPLICE
  - D436-38 SPLICE
  - S1367-1-6 TERMINAL
  - S1367-1-8 TERMINAL
  - S2974N3 SOLDER SLEEVE
  - S2974-3 SHIELD TERMINATION

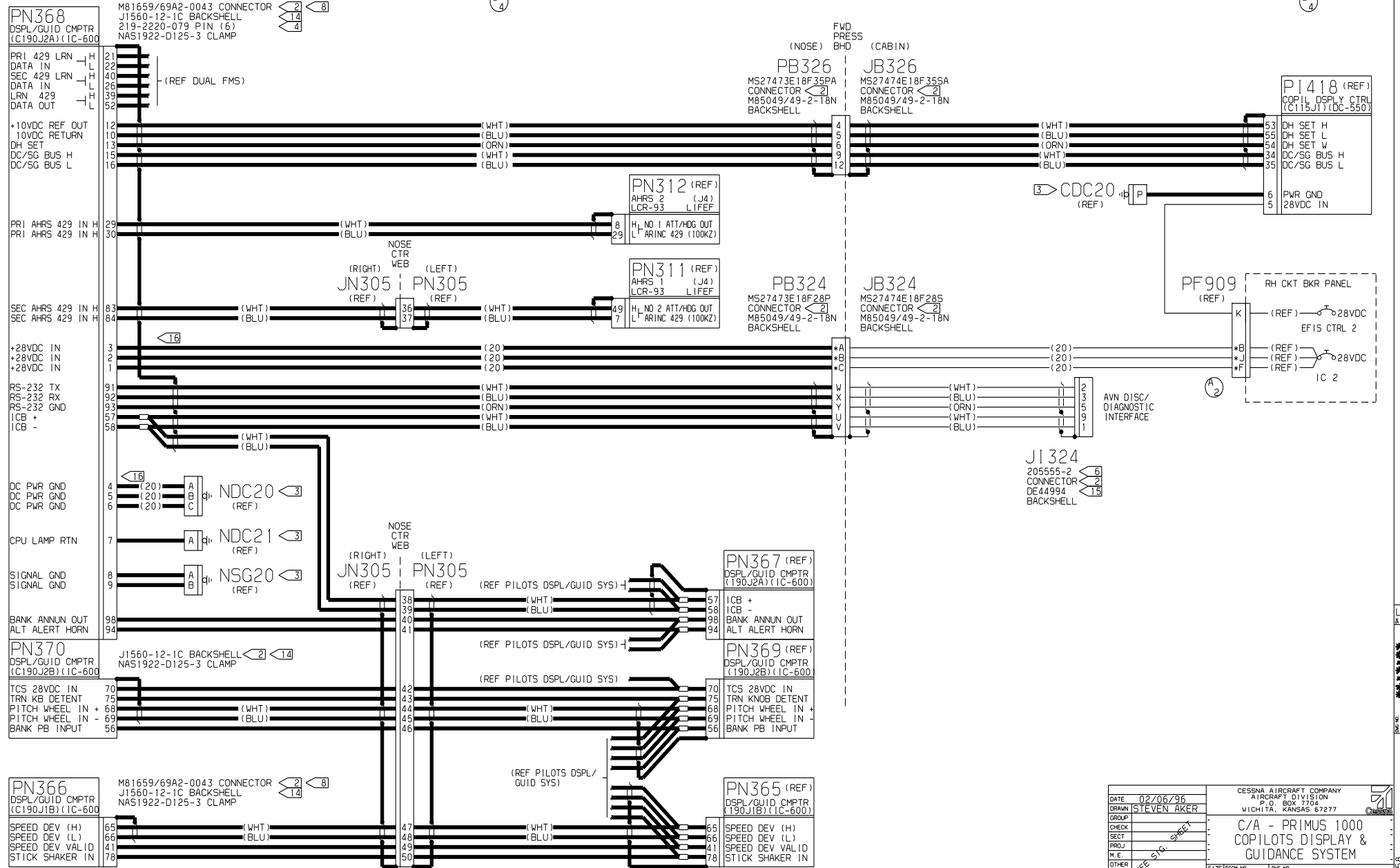
- LINES SHOWN AS BOLD SHALL MEET THE HIRF GUIDELINES AS SPELLED OUT ON THE AVIONICS CABLE KIT, AND MANUFACTURED IN ACCORDANCE WITH CESSNA SPECIFICATION CSAM012.
- SUNBANK ELECTRONICS INC., PASO ROBLES, CA.
- ITT CANNON, SANTA ANA, CALIF.
- FOR 20 AWG WIRE USE, TRISTAR PIN P/N 219-2220-079 WITH EXTRACTION TOOL: M81969/14-01.

REVISIONS			
SHEET	REV	DESCRIPTION	DATE APPROVED
1	A	BY REVISION:	07/26/96 SEA
2		1) REF SC314: CHANGED WIRES TO REF & COLORED: A1304-BNC SC314 A1305 - BNC SC314	
3		2) REF PF909: CHANGED PINS FROM *P TO *B, *K TO *F EFF: EC34158 WO XL-0150	
2	B	BY REVISION:	09/13/96 CRV
2		1) REF PC005: CHANGED PIN TO *1 WAS *M EFF: EC34158 WO XL-0681	
2	C	BY REVISION:	01/20/97 CRV
2		1) REF PN366: EQV5 SELECT WIRE 28PN366-MMLC20 MOVED TO EQV5 DMC 8616102 REV C. AGT COMPLIES. NO WIRING CHANGES REQUIRED EFF: EC34158 WO XL-809	
1	D	BY REVISION:	06/06/97 SEA
1		1) IMPLEMENTED THE SYNC'D FD'S WITH A SINGLE FD MODE SELECTOR BY DELETING THE NO 2 FD MODE SELECT REF DES P1326 ASSOC WIRING & PARTS AS FOLLOWS: 3P1326 - 47P1418, 4P1326 - 48P1418 5P1326 - 49P1418, 6P1326 - 50P1418 7P1326 - 57P1418, 8P1326 - 58P1418 9P1326 - 60P1418, 21P1326 - 61P1418 17P1326 - FU1922A, 19P1326 - HDCC20 DELETED M24308/2-283F CONN, M39029/63-368 SOCKETS, M24308/25-9 SCREWLOCKS, & DR20962 BWSHELL	
1		2) ADDED THE NO 1 FD MODE SELECTOR P1325 & ASSOC WIRING AS FOLLOWS: 3P1325 - 47P1418, 4P1325 - 48P1418 5P1325 - 49P1418, 6P1325 - 50P1418 7P1325 - 57P1418, 8P1325 - 58P1418 9P1325 - 60P1418, 21P1325 - 61P1418	
2		3) DELETED REF DES P1326 & ASSOC WIRING AS FOLLOWS: 2P1326 - 30,8326, 30P8326 - 65PN900, 22P1326 - 1,8326, 1P8326 - 35PN366 1P1326 - TDC20	
3		4) DELETED REF DES P1326 & ASSOC WIRING AS FOLLOWS: 12P1326 - 13,8326, 13P8326 - 71PN384, 11P1326 - 14,8326, 14P8326 - 105PN368 10P1326 - 17,8326, 17P8326 - 106PN368 13P1326 - 18,8326, 18P8326 - 100PN368 14P1326 - 19,8326, 19P8326 - 103PN368 15P1326 - 20,8326, 20P8326 - 101PN368, 16P1326 - 21,8326, 21P8326 - 102PN368 16PN383 - 68PN384, 49/52PN384 - 104PN368 5) CHANGED ID TAG: WAS CH2987-1 EFF: EC34158 WO XL-1422	
2	E	BY REVISION:	07/08/97 SEA
2		1) CHANGED LENS CAP (REF) P/N DUE TO IMPLEMENTATION OF SYNC'D FD'S: P/N WAS 95XX1586-53335, NOW 95XX1586-62547 EFF: EC34158 WO XL-1422	



DATE: 02/06/96	CESSNA AIRCRAFT COMPANY	C/A - PRIMUS 1000 COPILOTS DISPLAY & GUIDANCE SYSTEM
GROUP: STEVEN AKER	AIRCRAFT DIVISION P.O. BOX 7704 WICHITA, KANSAS 67277	
CHECK: _____	SIZE: F308 NO.	F71379
SECT: _____	DWG NO.	
PROJ: _____	FABRICATE PER: DES2608	SCALE: SCL
M.E.: _____	PROCESS PER: XXXXXXXXXXXXX	
OTHER: _____	WIRE TERMINATION PER: DES2716	SHEET 1 OF 3





DATE: 02/06/96	CESNA AIRCRAFT COMPANY
DRAWN: STEVEN AKER	AIRCRAFT DIVISION
GROUP:	P.O. BOX 7704
CHECK:	WICHITA, KANSAS 67277
SEC. SIG. SHEET	
PROD.:	C/A - PRIMUS 1000
M. E.:	COPILOTS DISPLAY & GUIDANCE SYSTEM
FABRICATE PER: CES260A	SIZE: F309
PROCESS PER: XXXXXXXXXXXXX	SCALE: SCL
WIRE TERMINATION PER: CES218	SHEET 3 OF 3

CESSNA AIRCRAFT COMPANY  
 AIRCRAFT DIVISION  
 P.O. BOX 7704  
 WICHITA, KANSAS 67277

C/A - PRIMUS 1000  
 COPILOTS DISPLAY &  
 GUIDANCE SYSTEM

SCALE: SCL

SHEET 3 OF 3

CESSNA